



The reindeer herders are interested in selective breeding

Kirsi Muuttoranta & Asko Mäki-Tanila

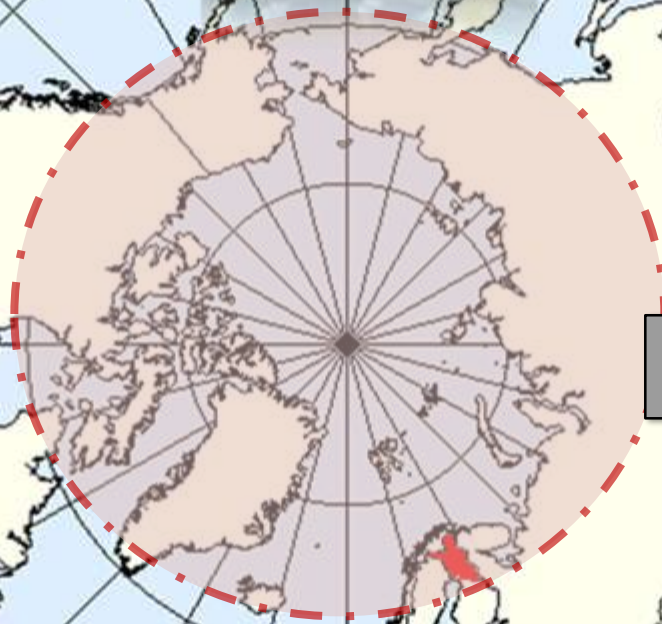
Biotechnology and Food Research, MTT Agrifood Research Finland

kirsi.muuttoranta@mtt.fi



Caribou

Reindeer





Reindeer production in Finland

- 203 700 animals (quota)
 - limited pastures
- semi-domesticated animal
- meat production



Reindeer production in Finland

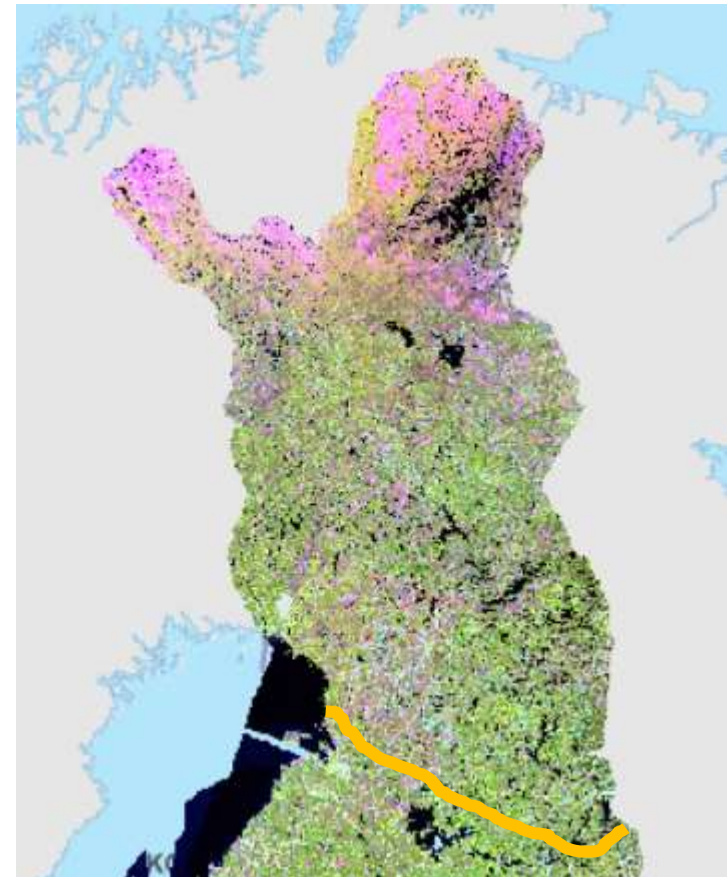
- Selection decisions made by herders
 - No ID, no records, no pedigree
 - Based on phenotype (+ dam)
- $\approx 70\%$ of slaughtered animals are calves
- More efficient selection?



OBJECTIVES

Vast & variable reindeer herding area –
importance and variation
in selection decisions
across the area?

- ▶ *Interviews of the herders*



MATERIALS AND METHODS

1. Interviews

The managers of the co-operatives (N=56)

- covers all the herding area in Finland
- phone interviews, semi-structured
- 45 interviews (response rate **80.4 %**)



2. Official statistics

on reindeer demography

Analyses in R (Kruskal-Wallis)



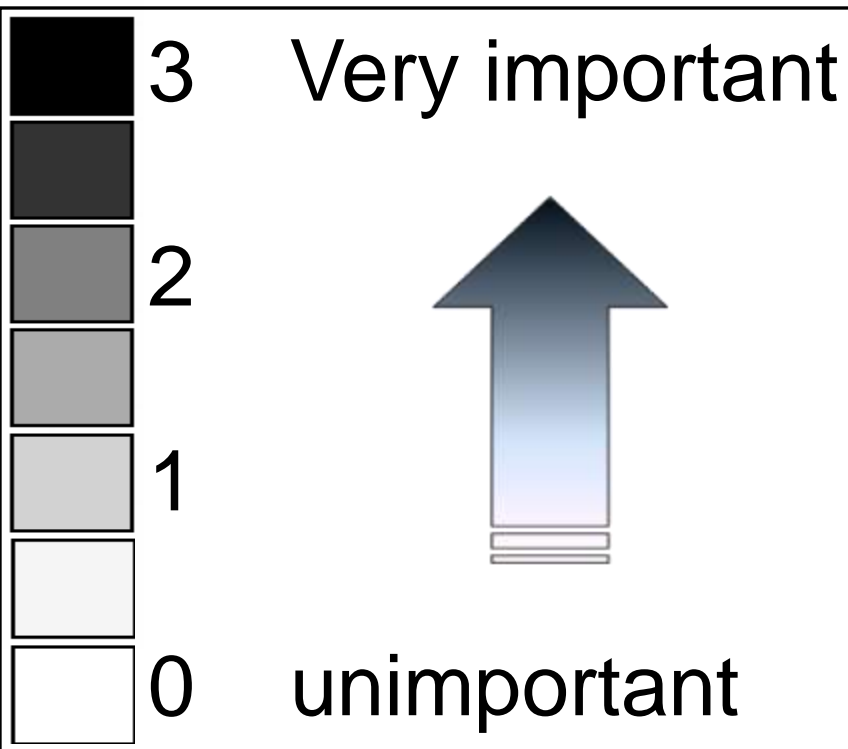
Photo: Maija Mölläri

RESULTS

1) Selection is important



Division of the regions



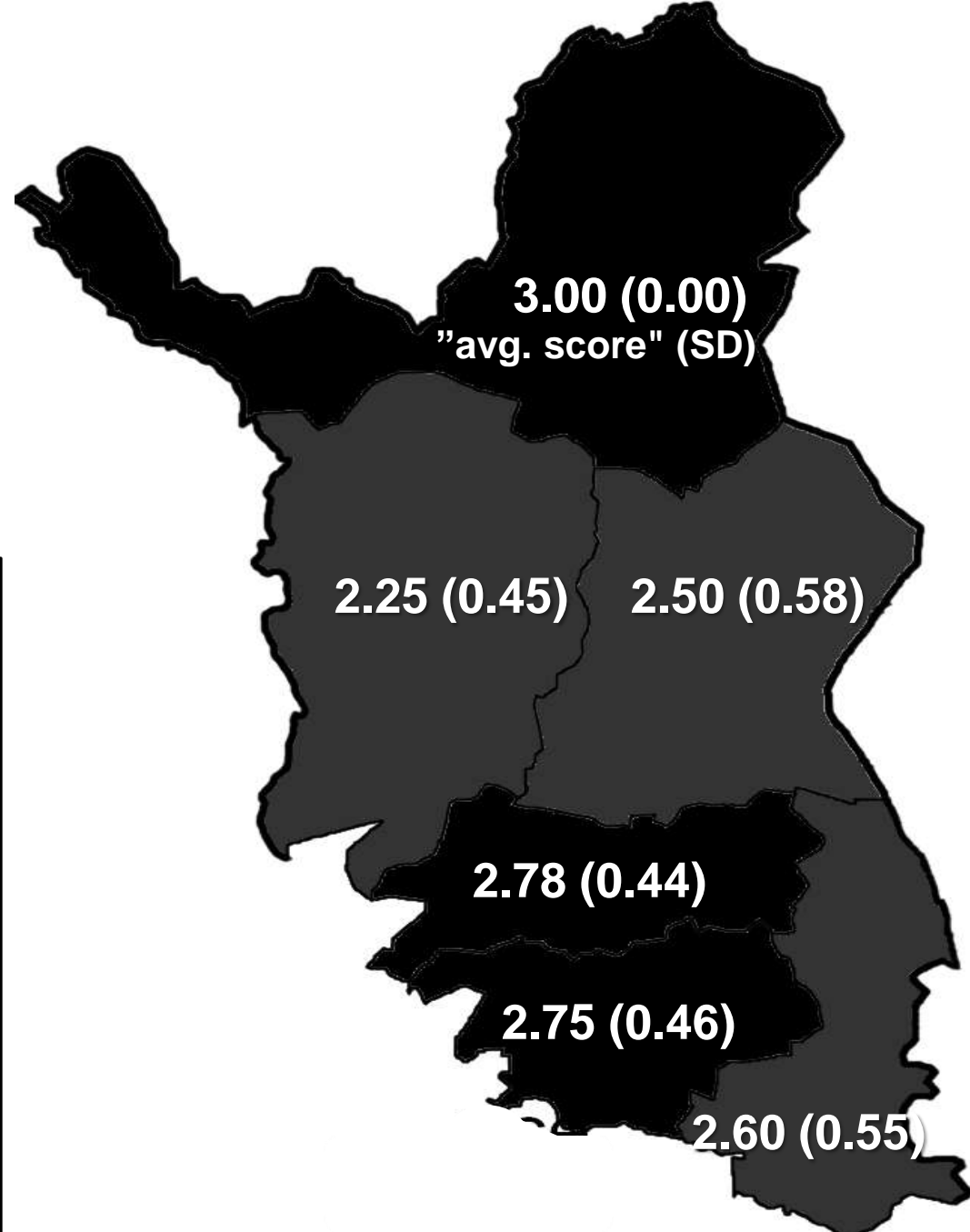
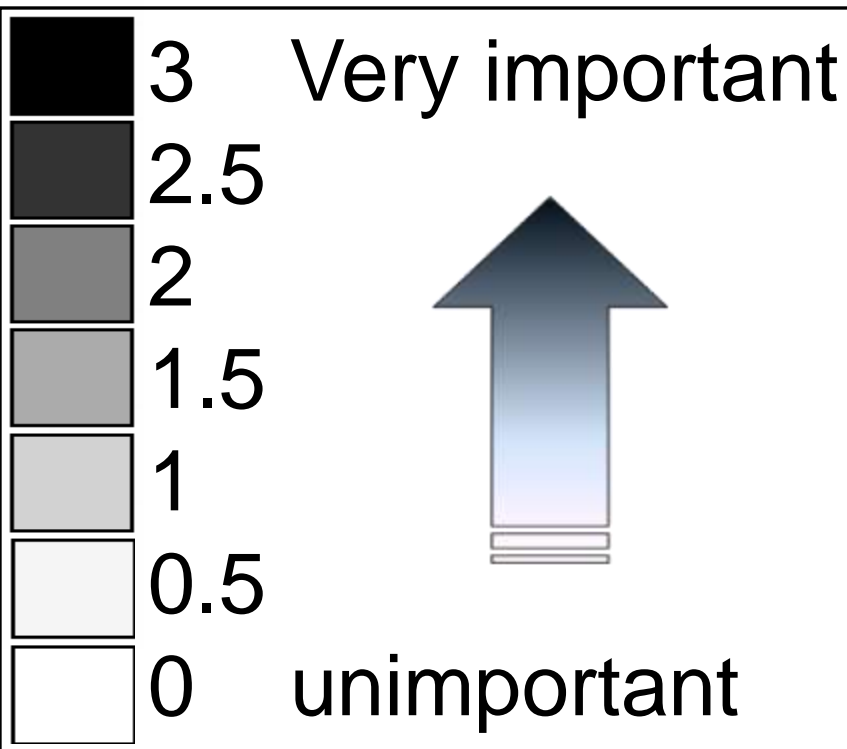
Introduction

Materials & Methods

Results

Conclusions

Selection is important in all regions



Introduction

Materials & Methods

Results

Conclusions

RESULTS

- 1) Selection is important
- 2) Selection criteria are consistent



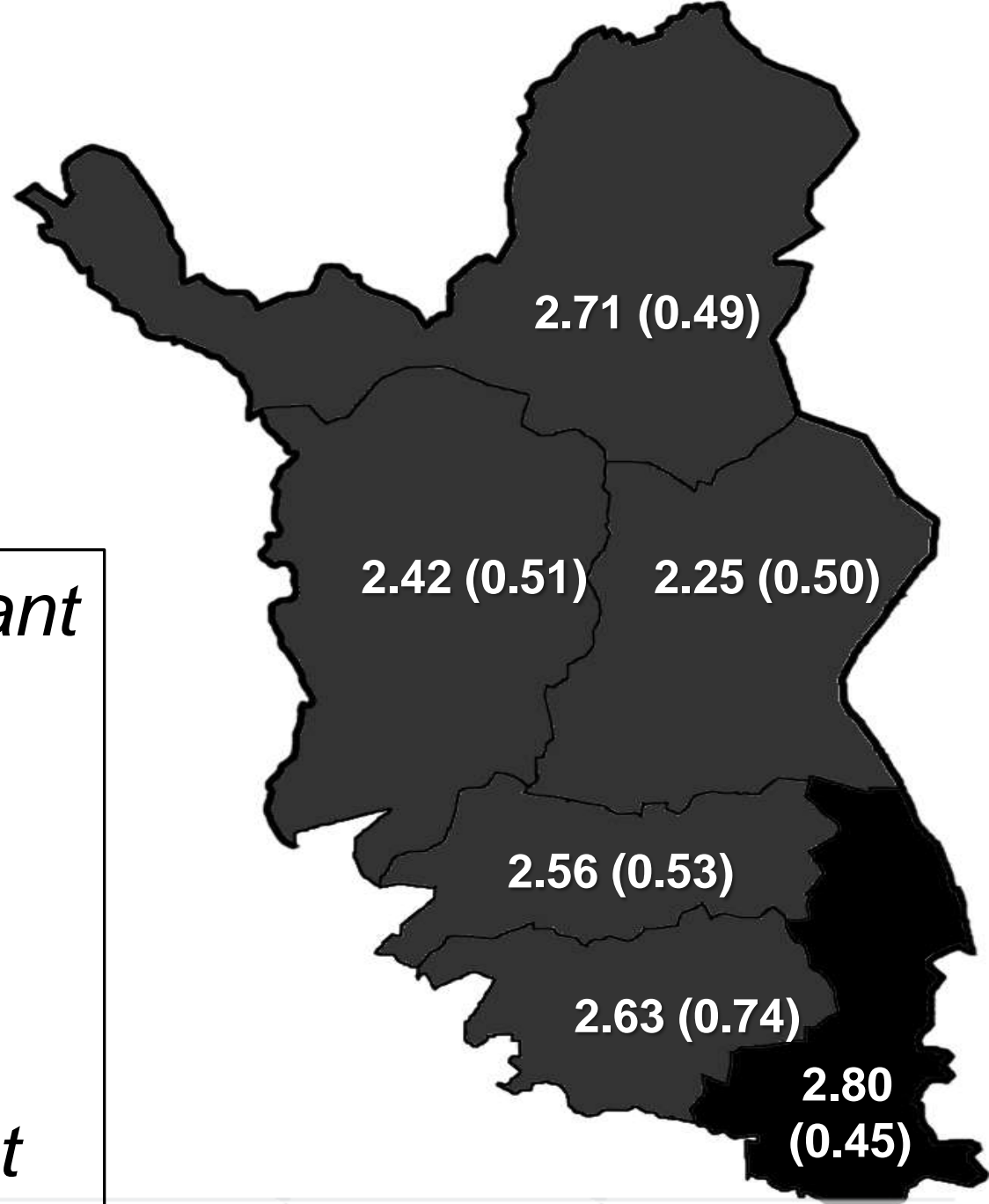
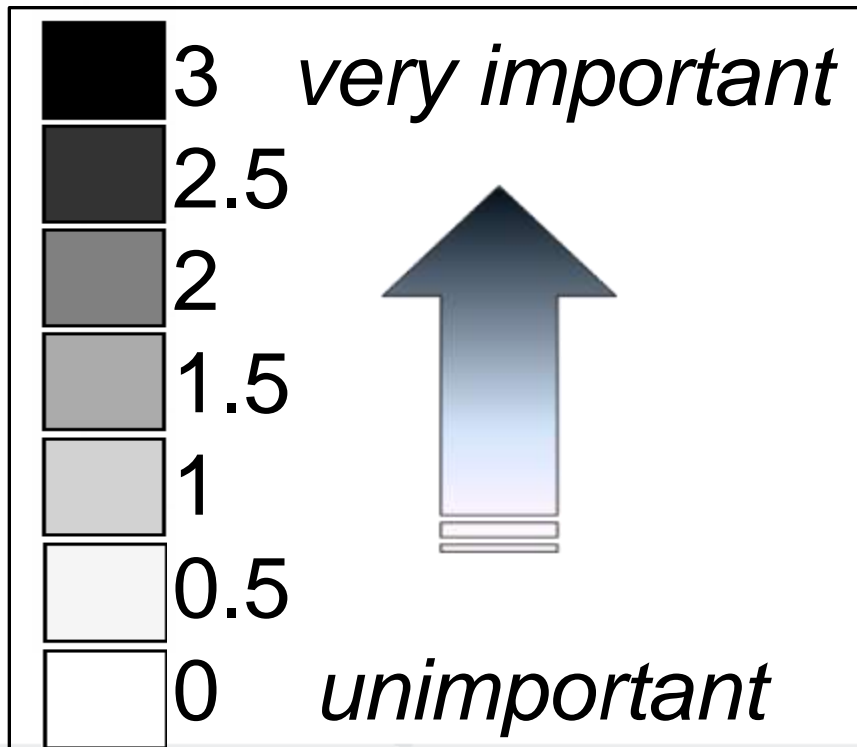
The most important selection criteria

- Calf size and muscularity
- Dam or dam line + maternal care
- Quality of hair

Main criteria are similar across the regions



I Selection is consistent:
calf size



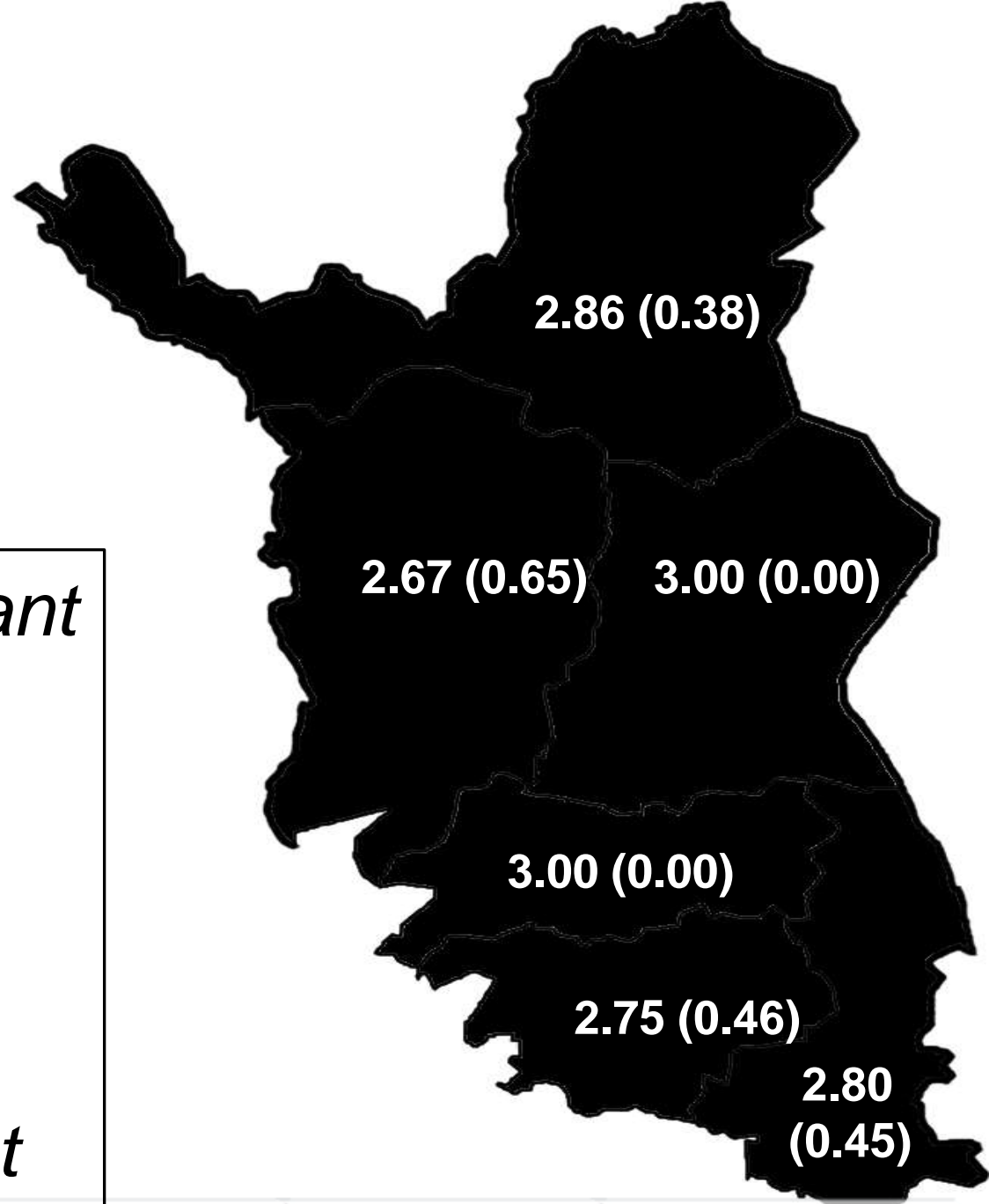
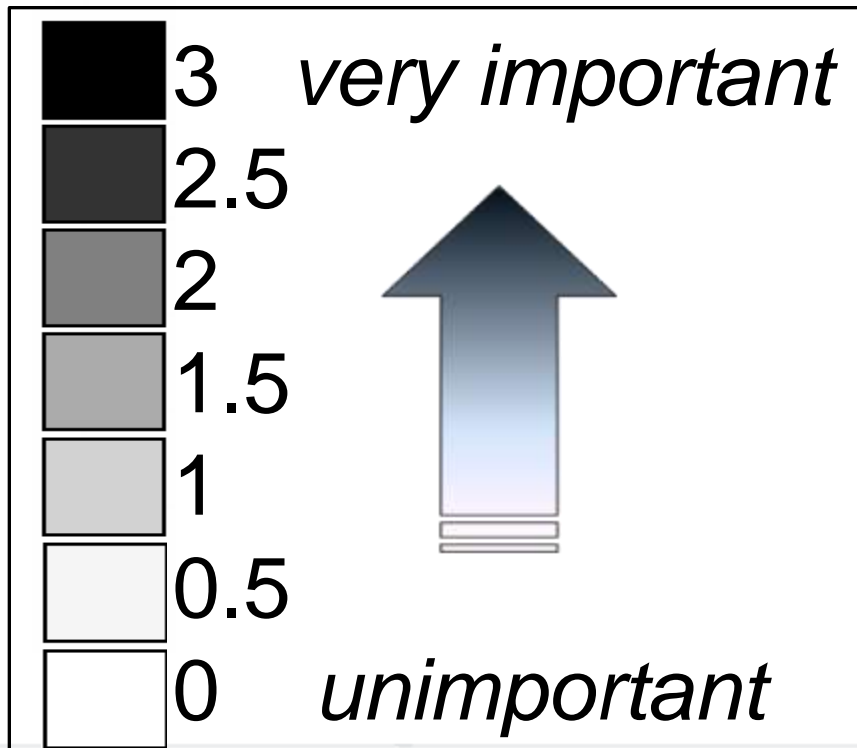
Introduction

Materials & Methods

Results

Conclusions

II Selection is consistent: *muscularity*



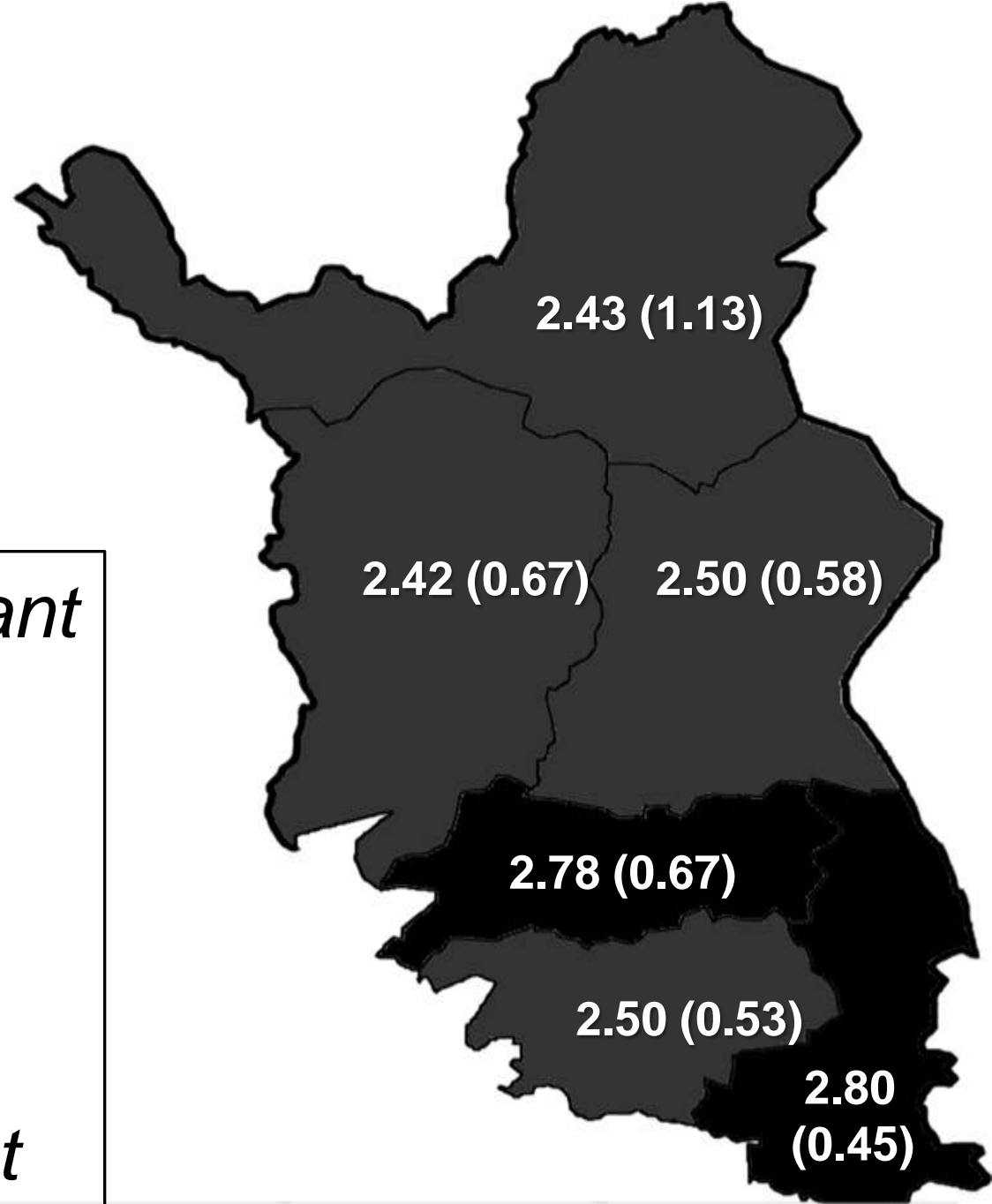
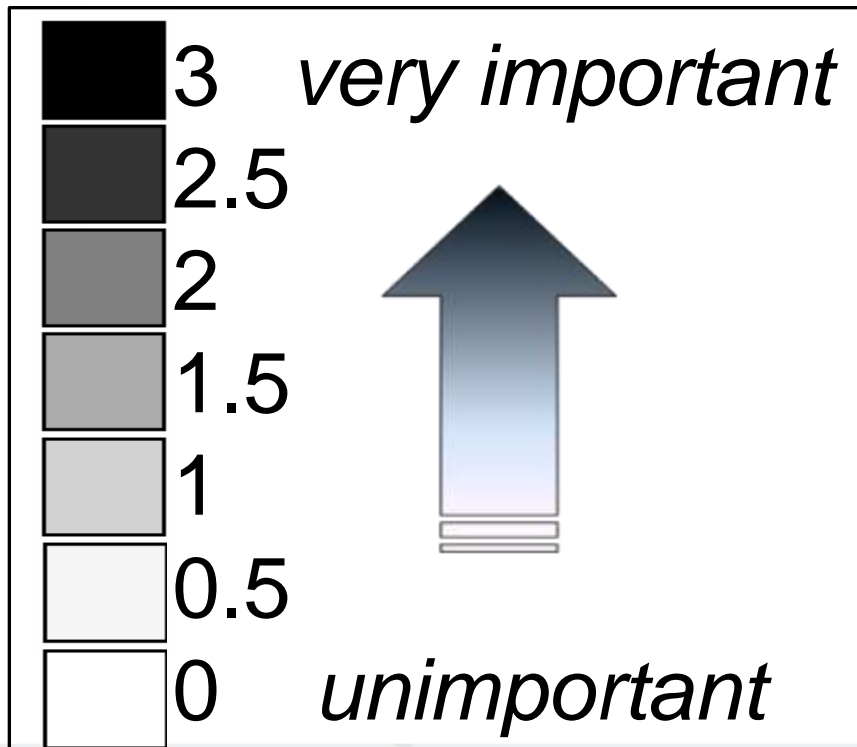
Introduction

Materials & Methods

Results

Conclusions

III Selection is consistent: *Importance of dam*

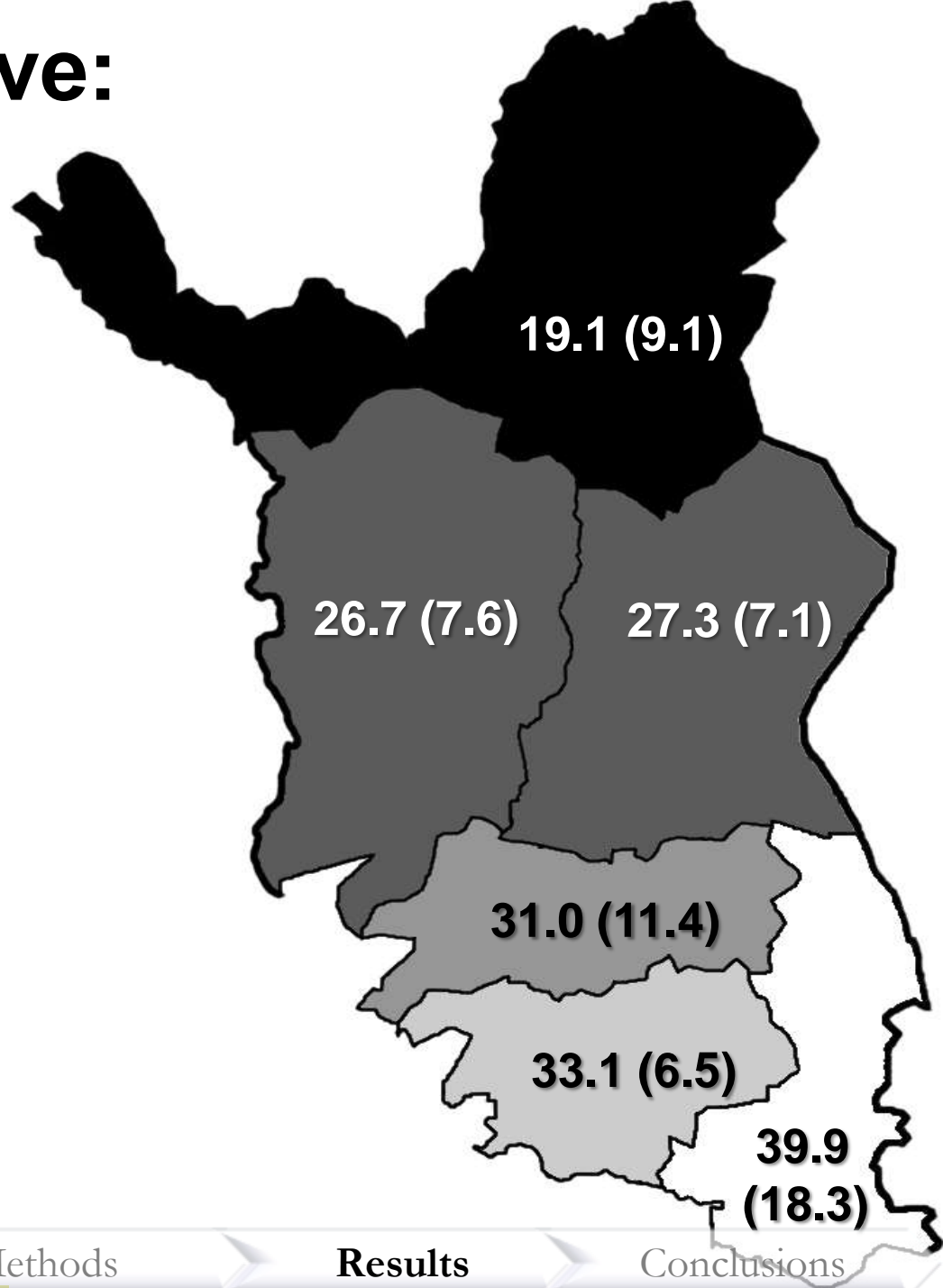
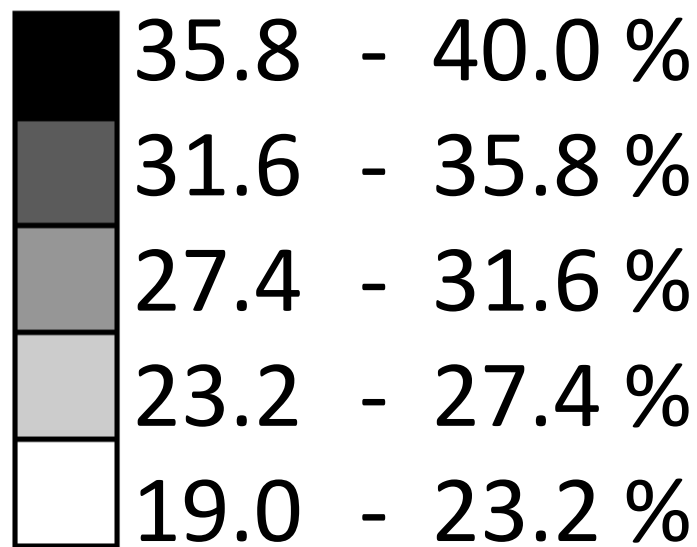


RESULTS

- 1) Selection is **important**
- 2) Selection criteria are **consistent**
- 3) Selection is **intensive**



Selection intensive: proportion of selected calves




CONCLUSIONS

- Selection is important, consistent and intensive
- More efficient selection?
 - ➔ implementation of data collection:
pedigree & weight recording
- The herders are interested in selective breeding -
good basis for genetic improvement scheme!



Acknowledgements:

Reindeer herders and the managers of co-operatives

Reindeer Herders' Association 

Raisio Plc Research Foundation 

Nordic Council of Ministers' 
Arctic co-operation programme

THANK YOU FOR YOUR INTEREST!

Kirsi Muuttoranta
MTT Agrifood Research Finland
kirsi.muuttoranta@mtt.fi

Photo: Veikko Maijala

The End!