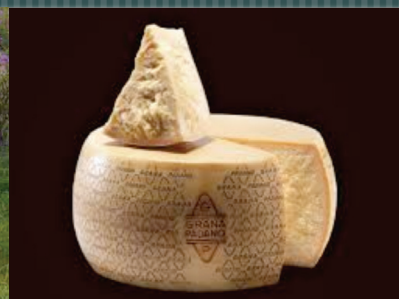


# THE MILK **PROTEOME** IN DIARY SCIENCE: FROM ANIMAL WELFARE TO FOOD SAFETY



Paola Roncada, PhD-

Istituto Sperimentale Italiano L. Spallanzani- Dipartimento di Scienze Veterinarie e Sanità Pubblica- Università degli Studi di Milano, Milano, Italy

AND

Cristian Piras, Alessio Soggiu, Isabella Alloggio, Luigi Bonizzi  
(Dipartimento di Scienze Veterinarie e Sanità Pubblica- Università degli Studi di Milano, Milano, Italy)



EAAP Copenhagen August 25<sup>th</sup> 2014

# MILK PROTEOME



# Evolution of feeding



'PARENTERAL'



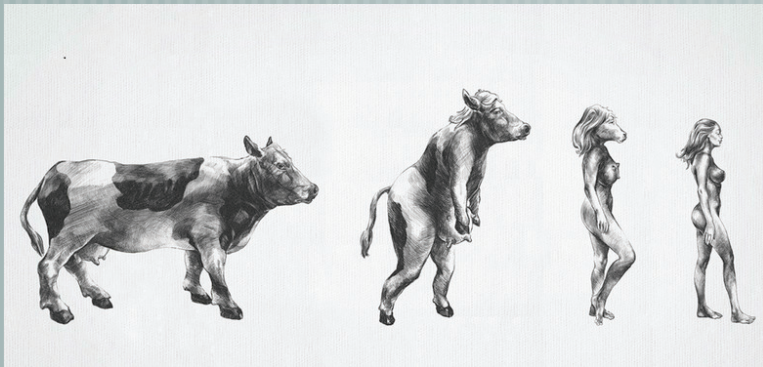
'ORAL AND GI'



# MILK FOR ALL MAMMALIA

**HUMAN:** AIM: GROWTH, CELLULAR DIFFERENTIATION

**OTHER:** SELECTION TO IMPROVE MILK PRODUCTION DIRECT TO HUMAN FOOD



**CO-EVOLUTION!**



# THE VISION



# ONE HEALTH CONCEPT



ONE MEDICINE

the **One Health** concept provides a pathway to showcase how human, environmental and animal health are interrelated. **One Health (formerly called One Medicine)** is dedicated to improving the lives of all species —human and animal—through the integration of human medicine, veterinary medicine and environmental science.

<http://www.onehealthinitiative.com/>

# MISSION



# THE LINK BETWEEN OH AND MILK





# GENERAL CONCEPTS

Use of proteomics in the development pathway for milk production, and assessing of milk safety and quality



**ANIMAL WELFARE**



**RAW MILK**



**FOOD PROCESSING**



**FINAL PRODUCT**



**CLEANING AND SANITATION**

QUALITY CONTROL    Microbial and biological safety

PROTEOMICS

Protein changes

Protein interactions

contaminants

IN-PROCESS CONTROL

Production steps

PROTEOMICS

Protein changes

Protein interactions

contaminants

QUALITY CONTROL

Production steps

Batch to batch variations

PROTEOMICS

Protein changes

contaminants

Microbial control

Detection of resistant microorganism

PROTEOMICS-MICROBIAL PROTEOMES



# DIAGNOSTICS



GREAT PROMISE FOR MEDICINE

## MICROBIAL PROTEOMICS: THE CHALLENGE

ANIMAL PRODUCTION

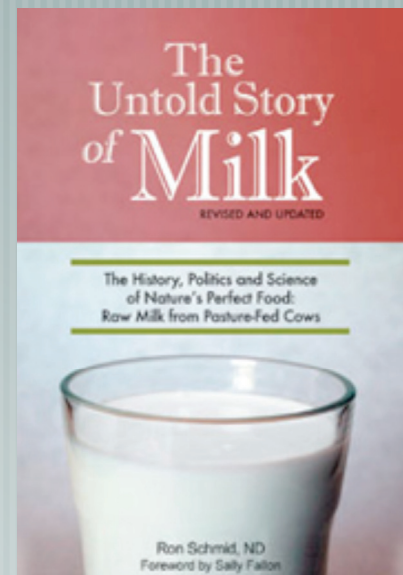


Etiology  
Pathogenesis of DISEASE

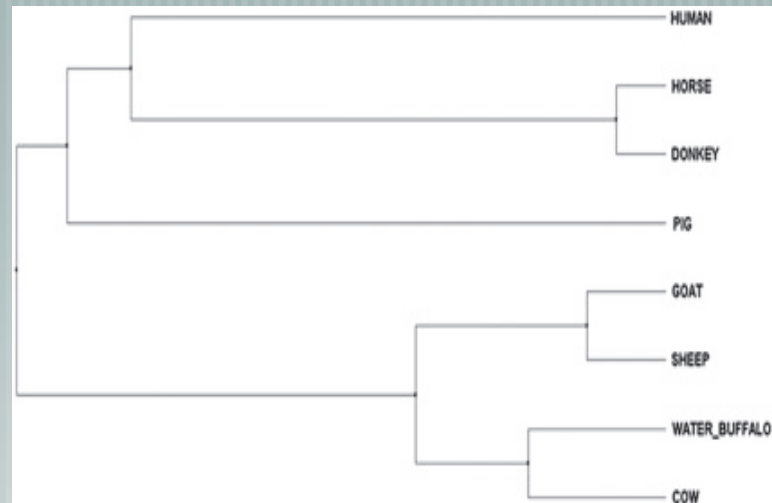
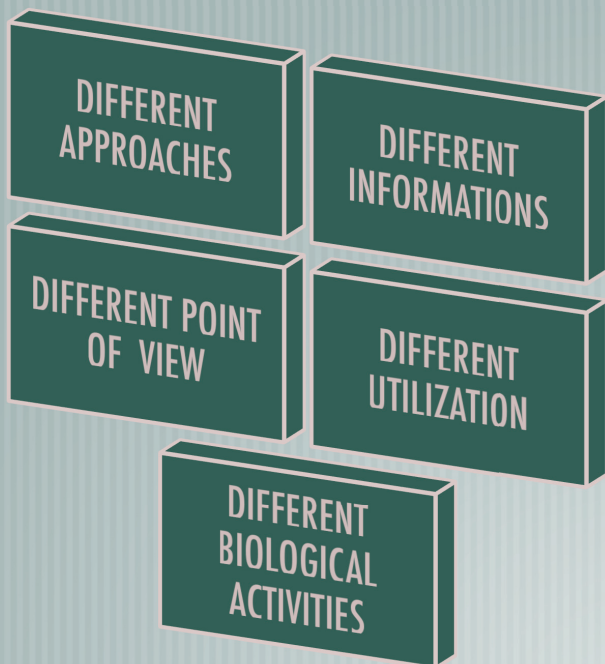


ANIMAL WELFARE  
PRODUCTION  
QUALITY  
FOOD SAFETY

# FOOD SAFETY AND THE MILK STORY



# HUMAN MILK and MAMMALIAN MILK



# HUMAN MILK vs OTHER MAMMALIA

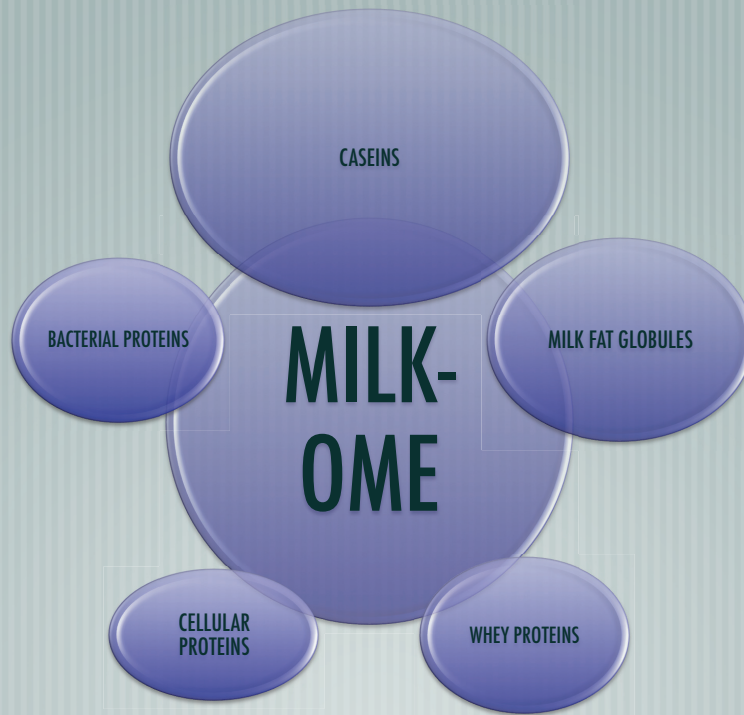
NUTRITION, DEVELOPMENT  
OF NEWBORN

IMMUNITY

BRAIN  
DEVELOPMENT

ONLY FOR HUMAN  
NUTRITION



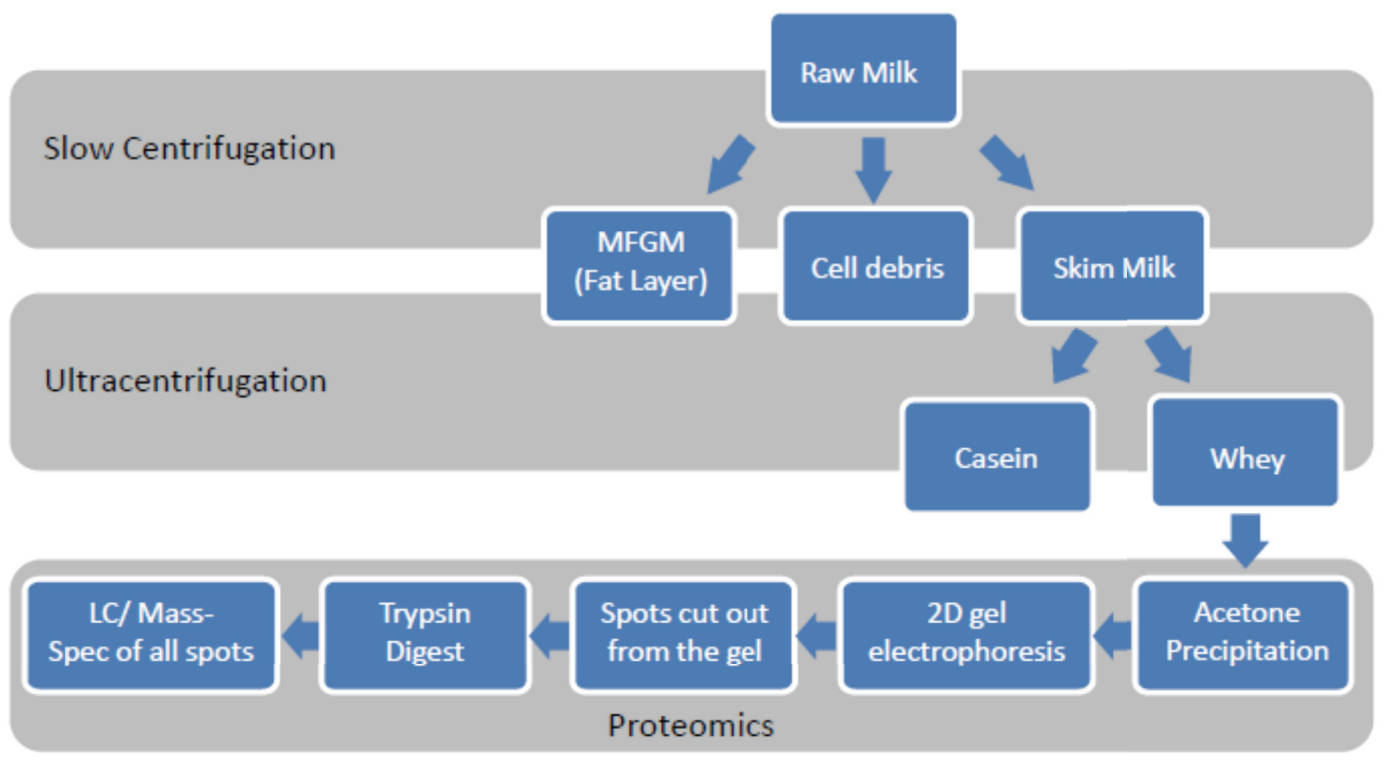


# GENERAL STRATEGIES AND ANALYTICAL METHODS





# PREFRACTIONATION METHODS

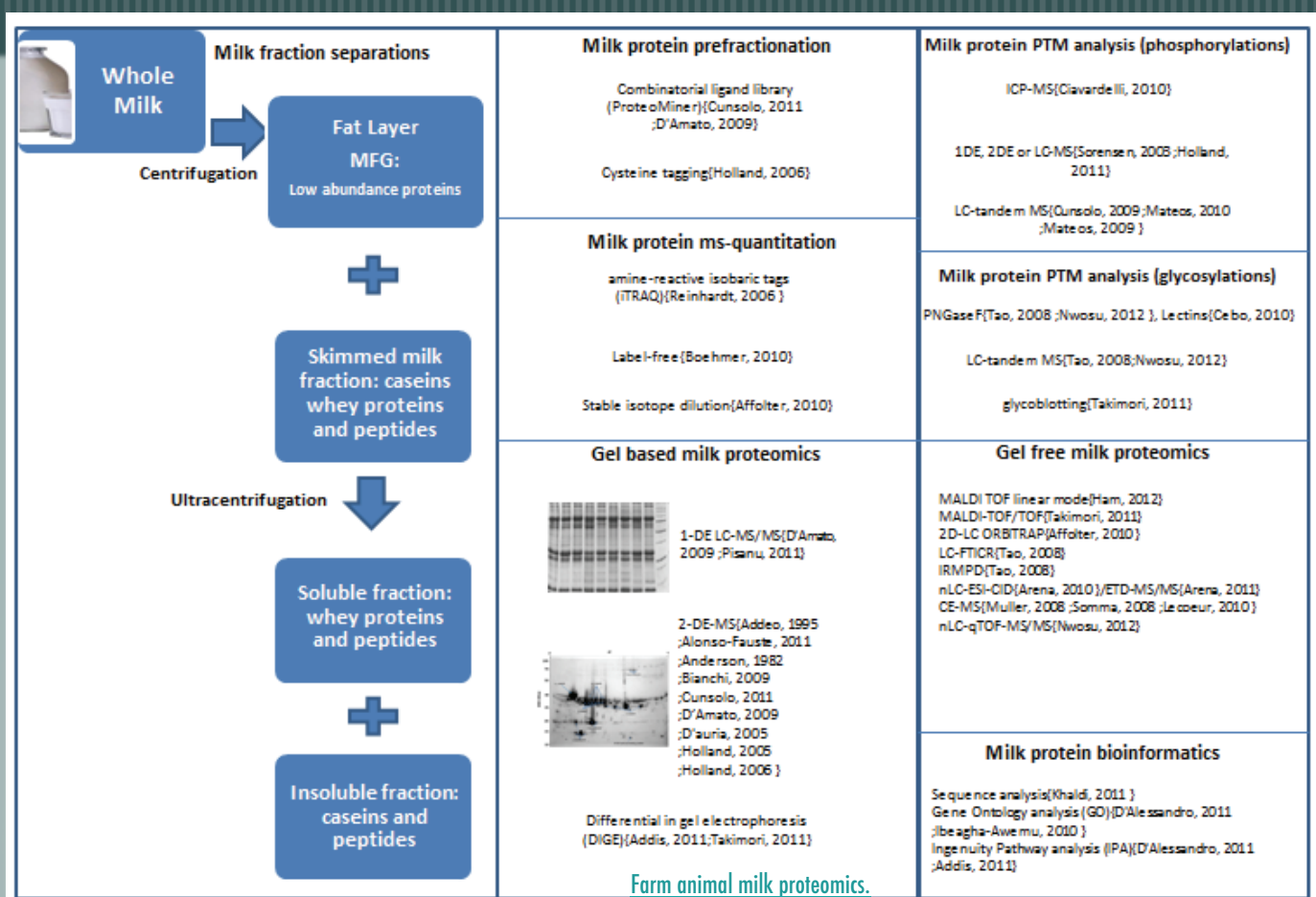


[Proteomics as a tool to explore human milk in health and disease.](#)

**Roncada P**, Stipetic LH, Bonizzi L, Burchmore RJ, Kennedy MW.

J Proteomics. 2013 Aug 2;88:47-57

# MASS SPECTROMETRY

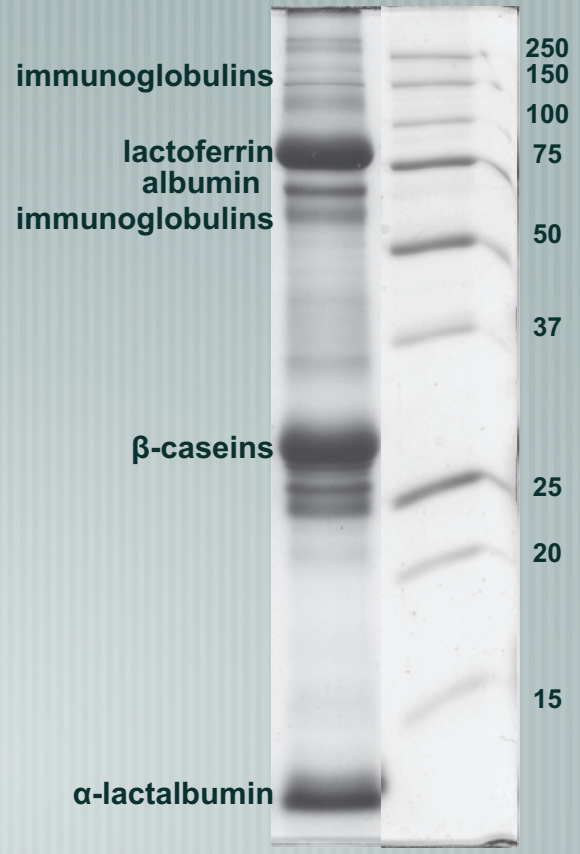


Farm animal milk proteomics.

Roncada P, Piras C, Soggiu A, Turk R, Urbani A, Bonizzi L. J Proteomics. 2012 Jul 19;75(14):4259-74.

# ELECTROPHORETIC SEPARATION

- ONE DIMENSIONAL

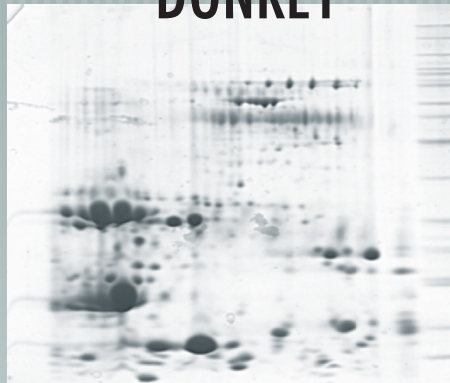


## DIFFERENT SPECIES; DIFFERENT MILK....

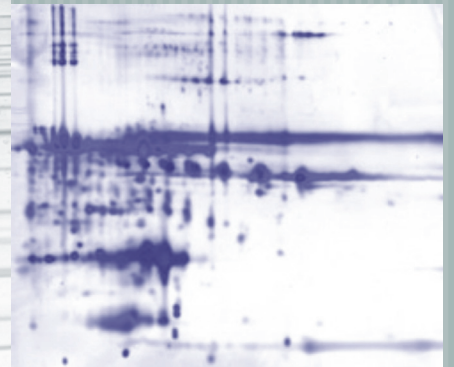
**BOVINE**



**DONKEY**



**WATER BUFFALO**



**GOAT**



**HUMAN**

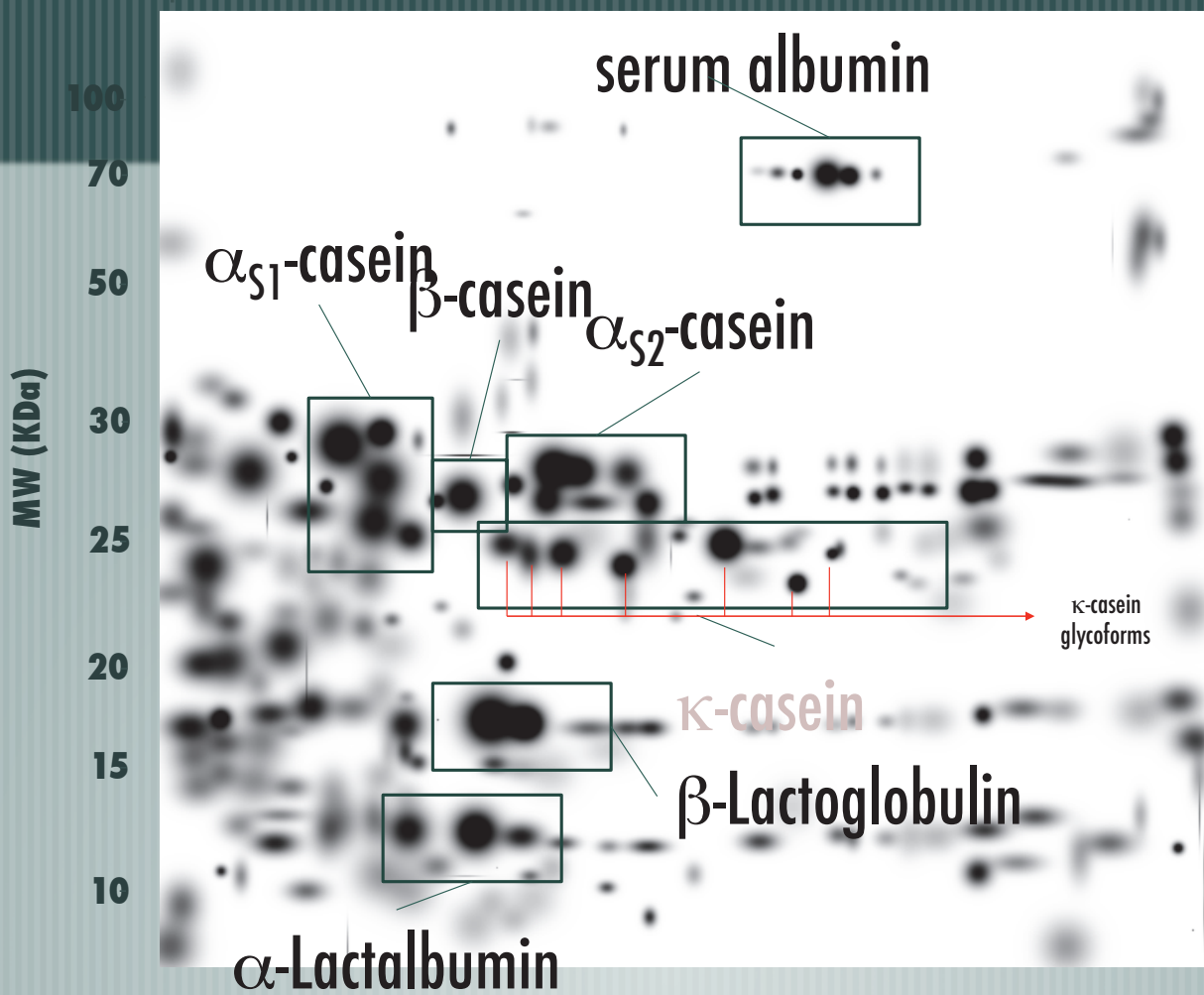


**SHEEP**



[Proteomic evaluation of milk from different mammalian species as a substitute for breast milk.](#)

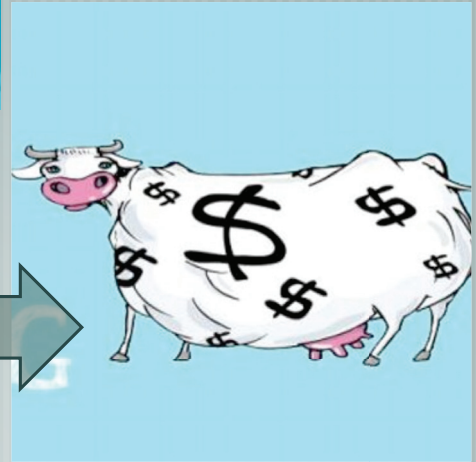
D'Auria E, Agostoni C, Giovannini M, Riva E, Zetterström R, Fortin R, Greppi GF, Bonizzi L, Roncada P.  
*Acta Paediatr.* 2005 Dec;94(12):1708-13



# FOOD SAFETY:

**Milk Allergy**

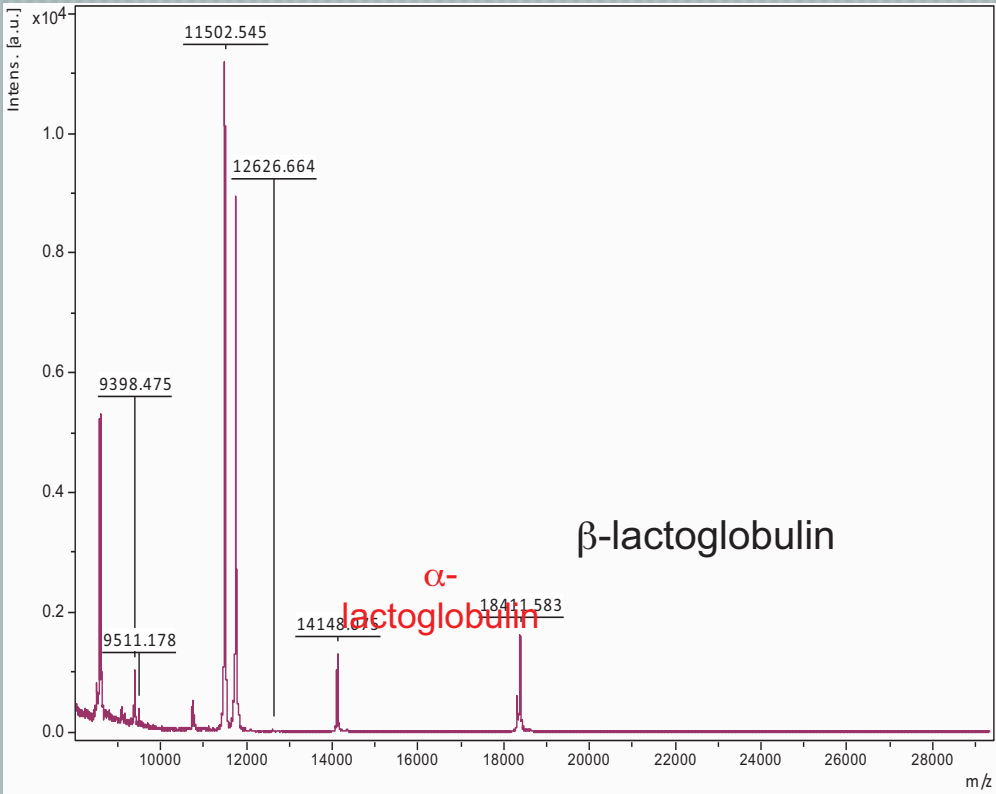
**FORMULA MILK**



# FORMULA **MILK** vs HUMAN **MILK**

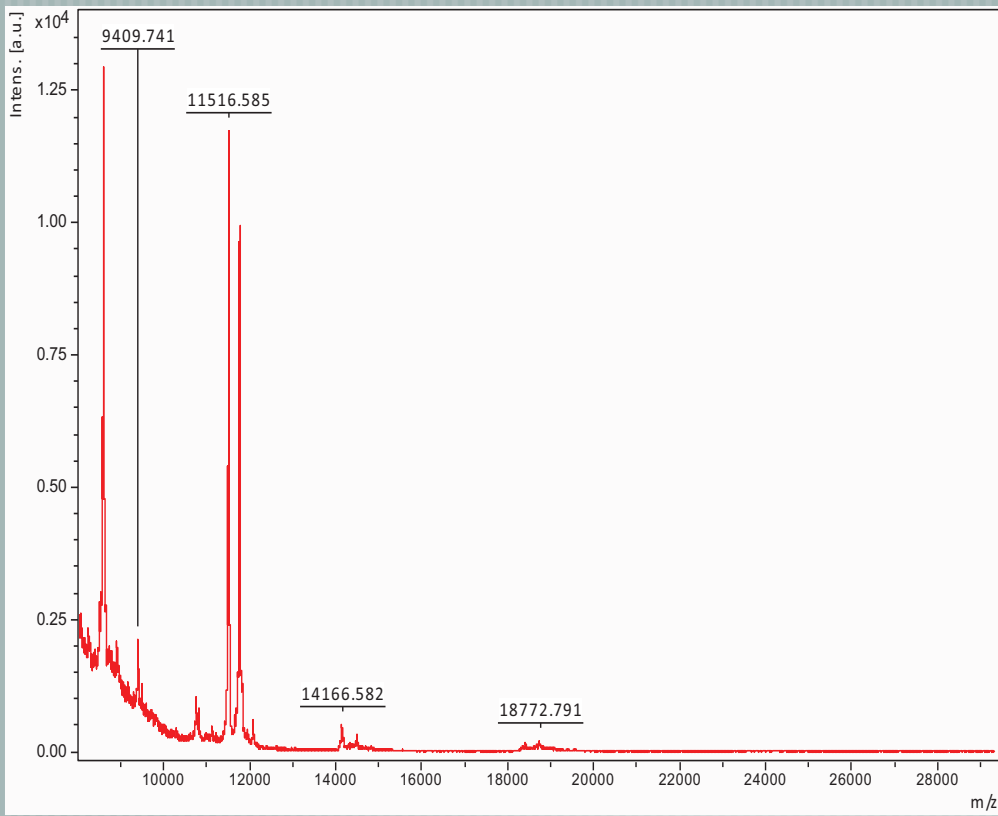
- **GLYCATION—MAILLARD REACTION!**
- **BETALACTOGLOBULIN—ALLERGENIC—LOW CONCENTRATION?**

STARTING FORMULA BOVINE MILK ACQUISITION RANGE 8000-30000



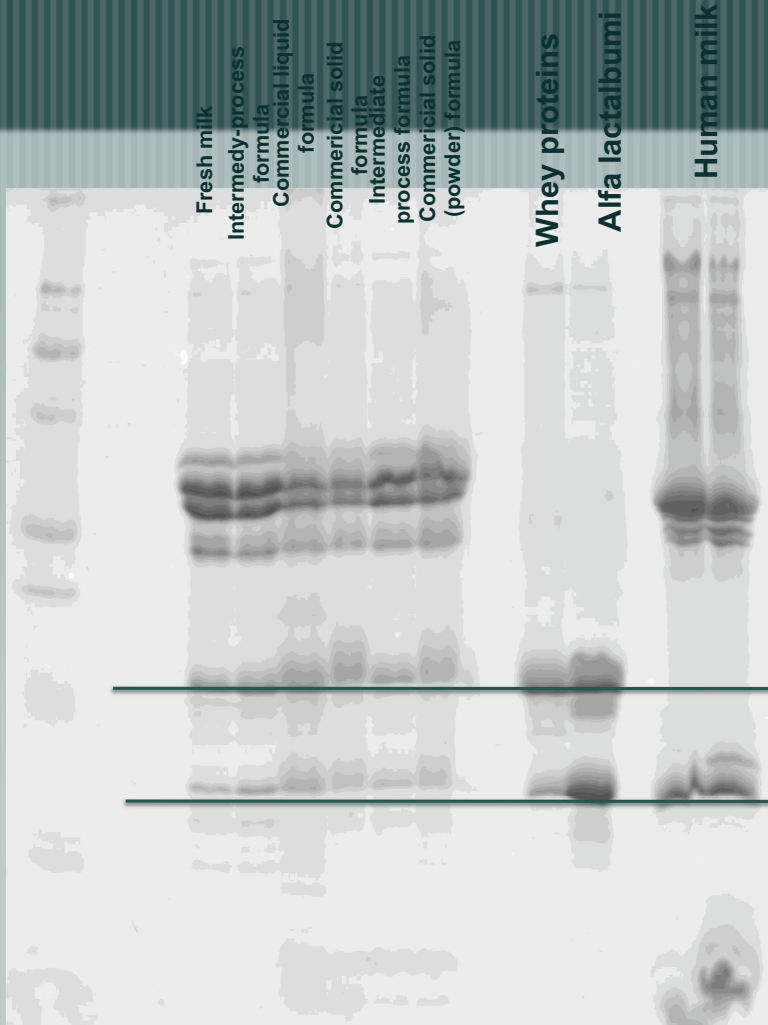


END PRODUCT FORMULA MILK (POWDER) acquisition range 8000-3000 DA



# LARGE SDS-PAGE

MW

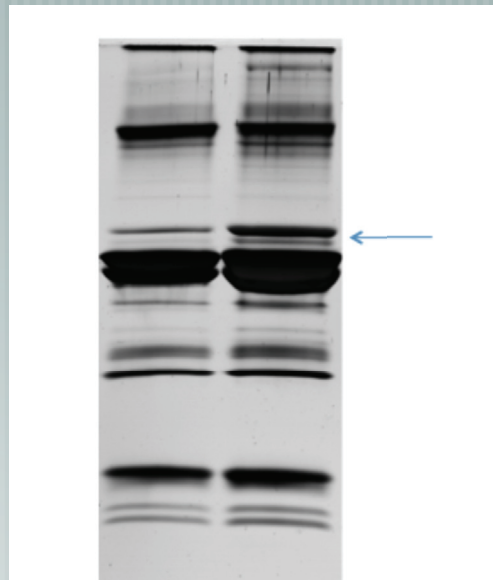


**THE UNTOLD PROBLEM IS**

**THERMIC TREATMENTS!!!**



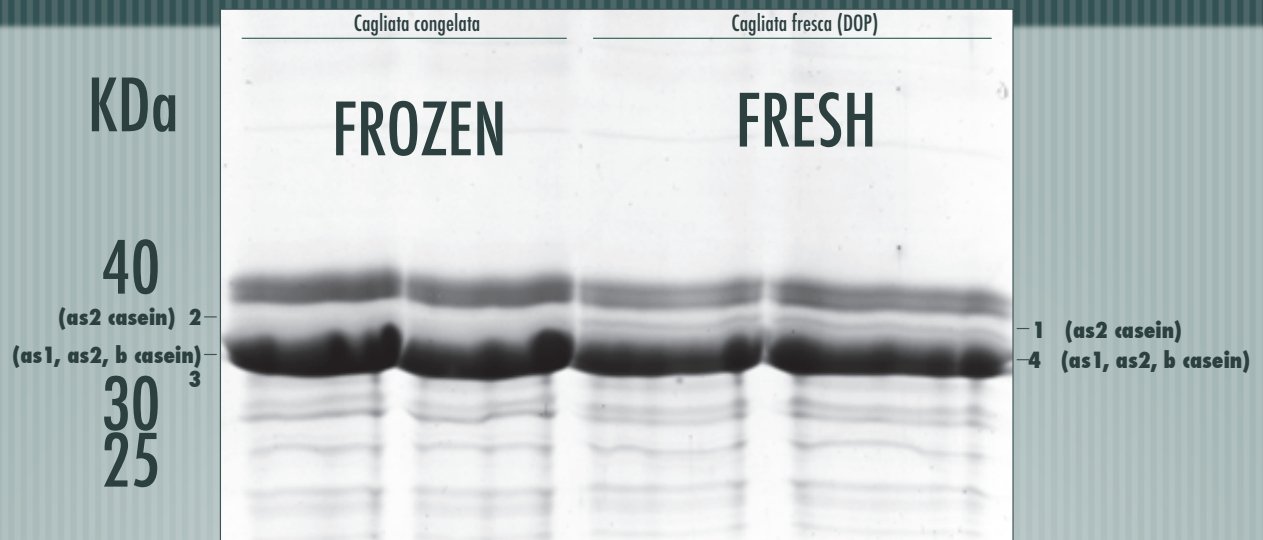
# MOZZARELLA FROM FROZEN CURD



FROZEN

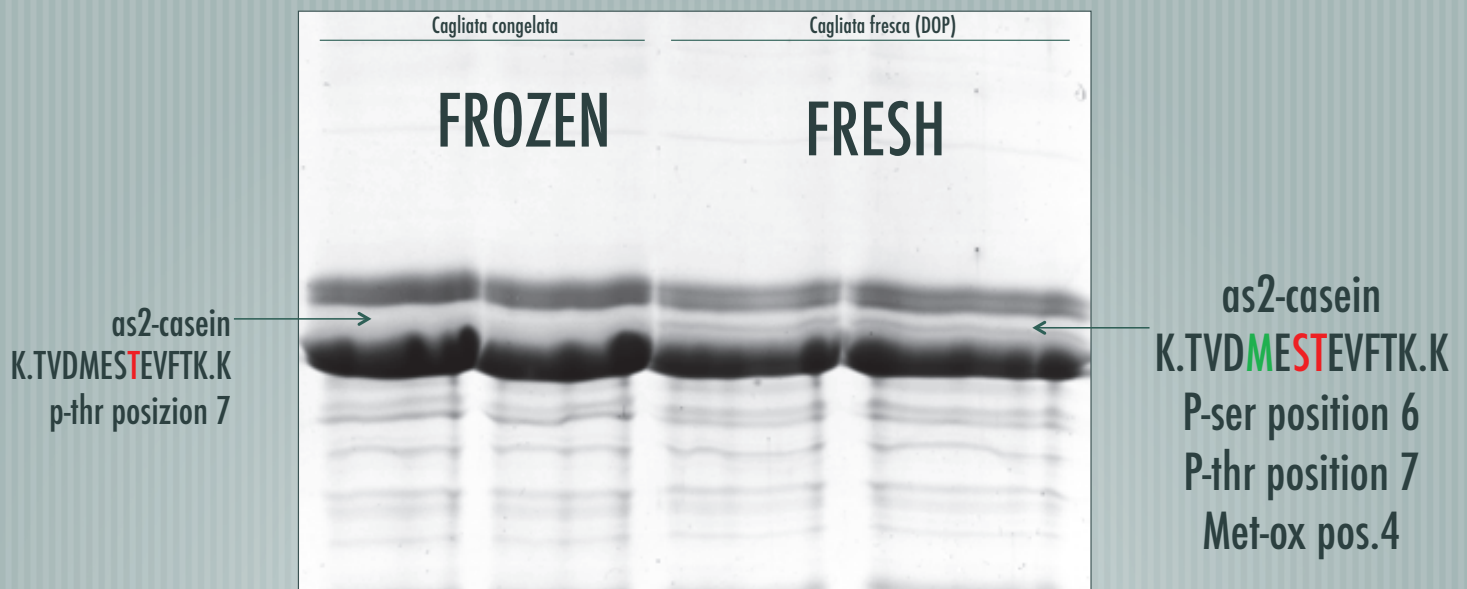
FRESH

# LC-MS/MS

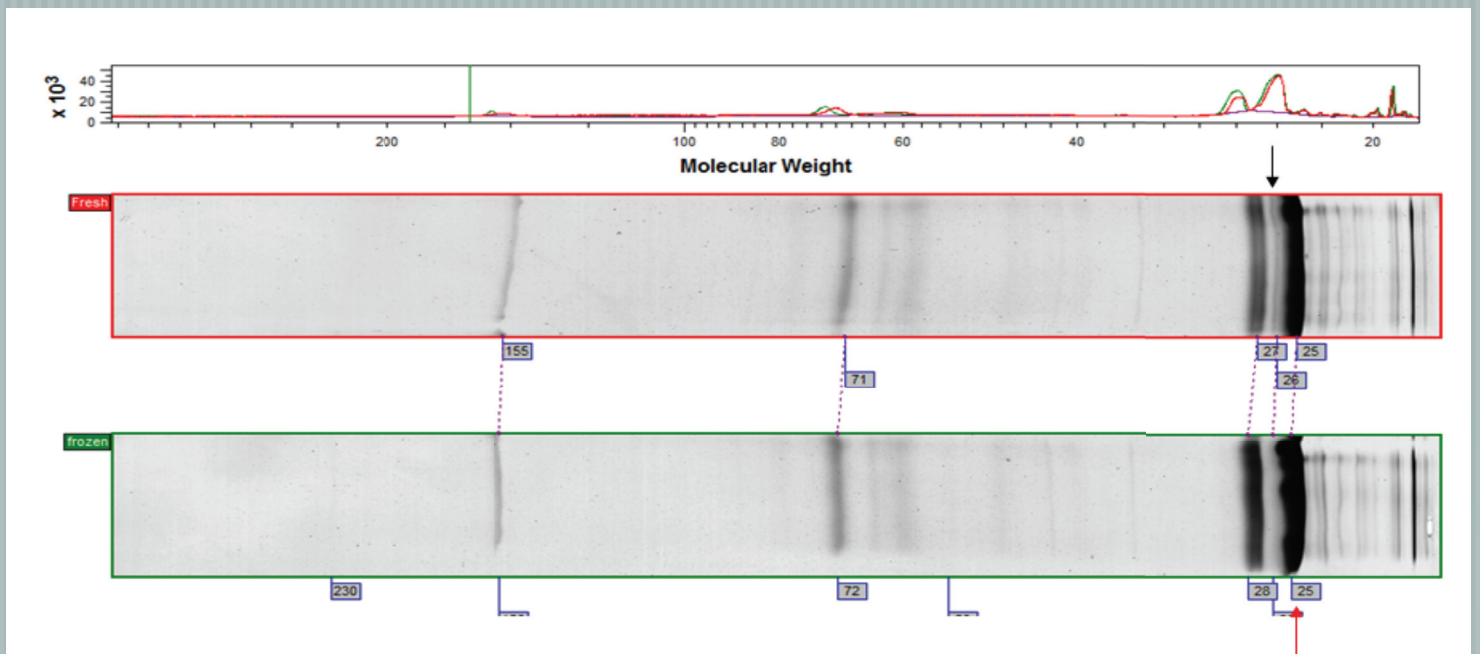


band	FROZEN CURD	FRESH CURD
1	-	as2 casein*
2	as2 casein	-
3	as1, as2, b casein	-
4	-	as1, as2, b casein

# LC-MS/MS – PHOSPHORYLATION



# MOZZARELLA: FRESH MILK VS POWDER MILK



**BETA CASEIN!**







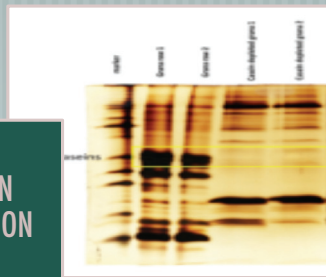
**FOCUS ON METAPROTEOMICS  
(FUNCTIONAL MICROBIOME) TO COUNTERACT CLOSTRIDIA**

# METAPROTEOMICS: METHODS

STARTING  
SAMPLE



CASEIN  
DEPLETION



PROTEIN  
EXTRACTION



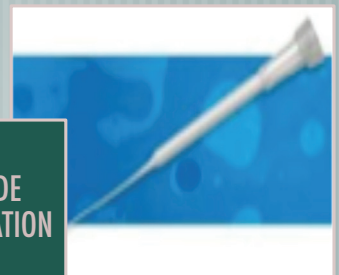
AB 5600  
TRIPLE TOF/  
SWATH



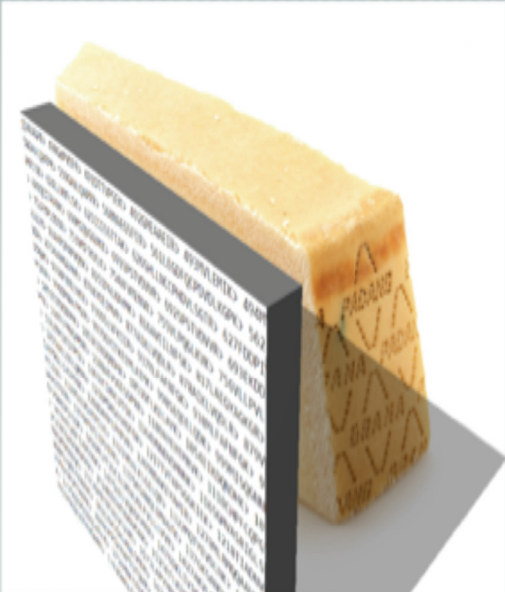
NANO 2D-LC



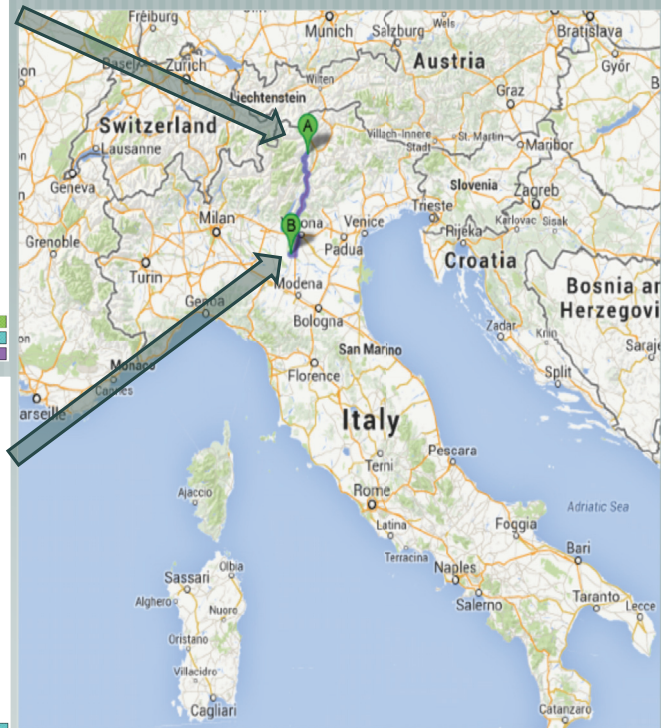
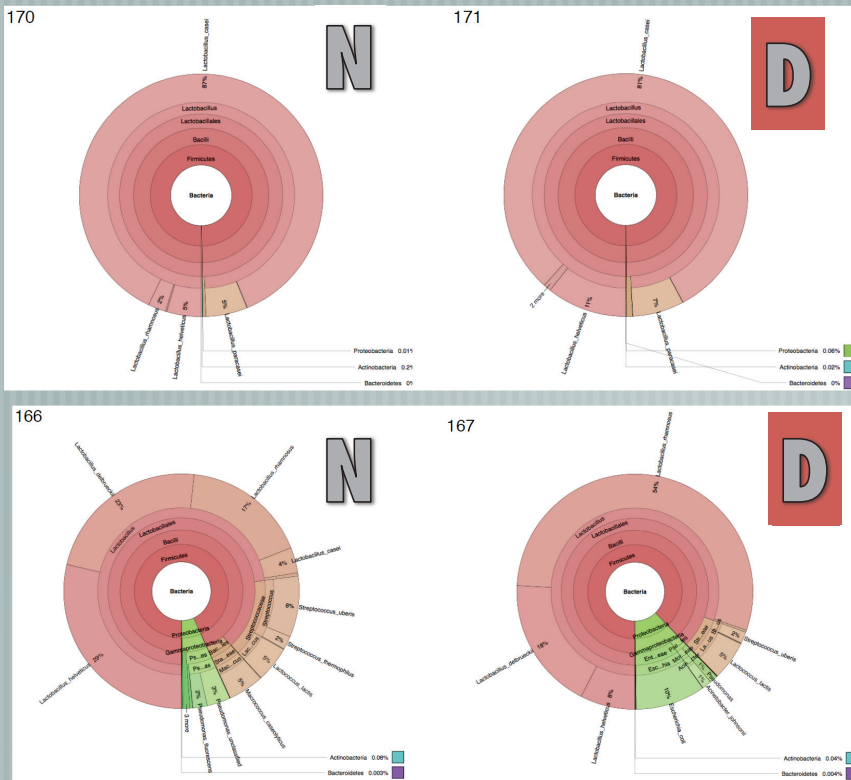
PEPTIDE  
PURIFICATION



# RESULTS

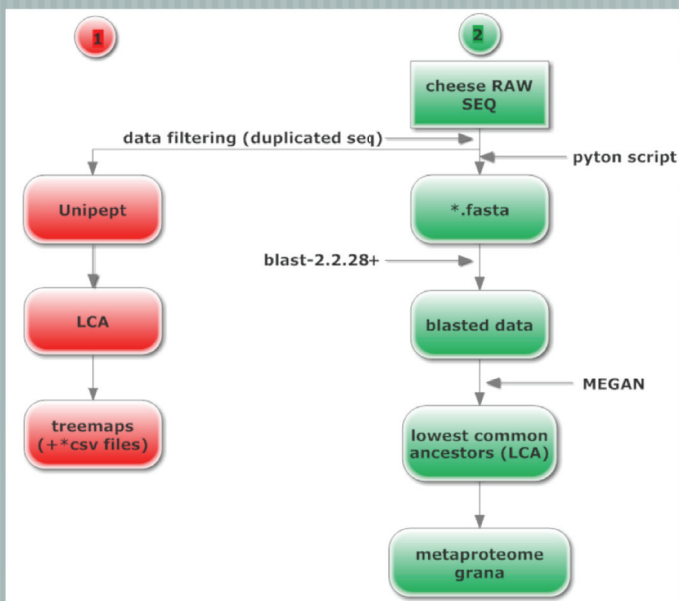


# Evaluation of metagenome shotgun sequencing from PDO\_GP



# Updates on bioinformatic pipeline for metaproteomics

## 2013



## 2014

Cheese\_GP spectra (FDR 1%)

QC+Fasta file

Offline Blast / custom DB

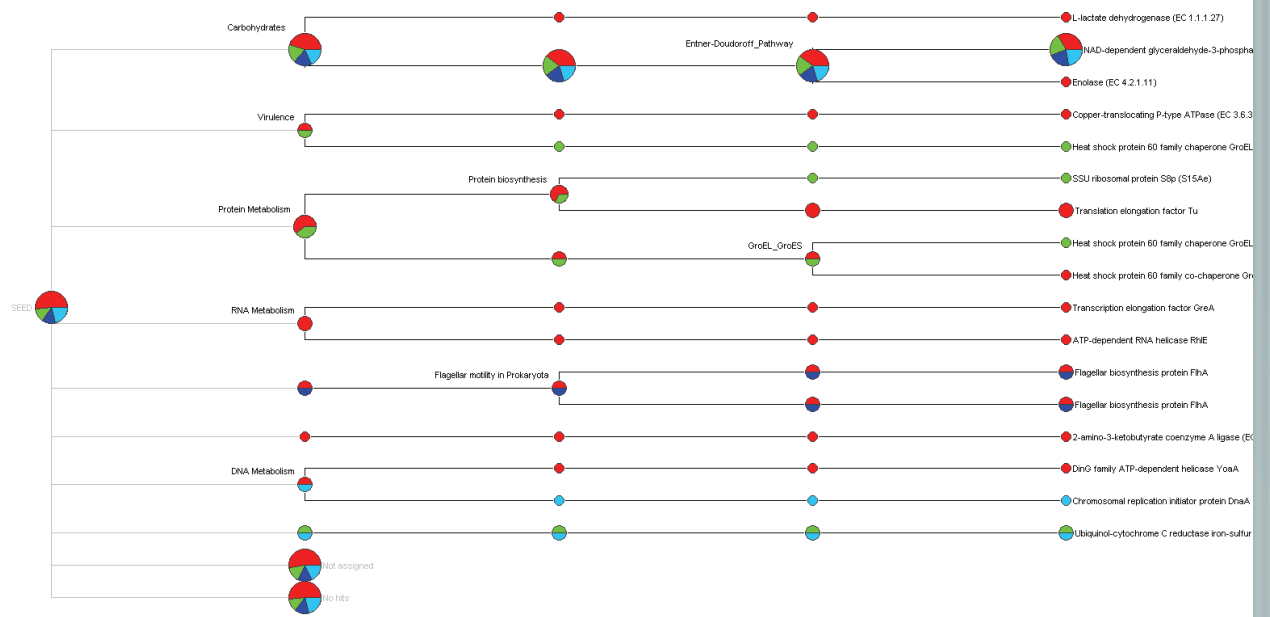
taxa classification (MEGAN 5.3)

Global taxonomic profile

**(NEW)** custom functional analysis using a new bioinformatic pipeline (see poster P-IV-01)

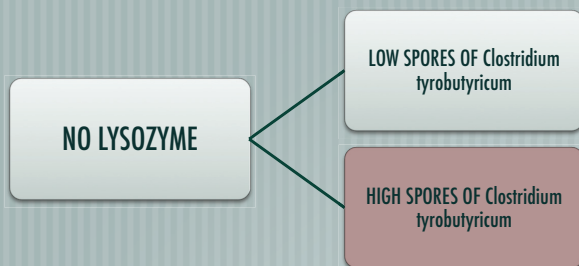


# SEED analysis (TN vs MN)

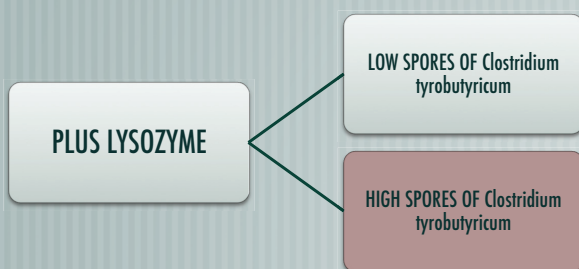


Legend (samples):  
■ TN305\_NB ■ TN305\_B ■ MN427\_NB ■ MN427\_B

# EXPERIMENTAL CASEIFICATION



SAME CONDITION OF  
TRENTEGRANA (TN NO  
LYSOZYME)

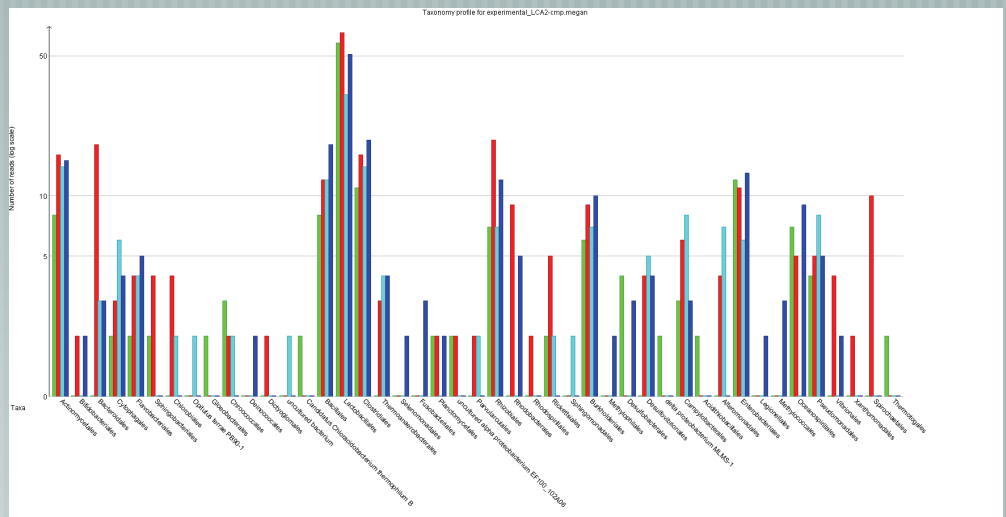
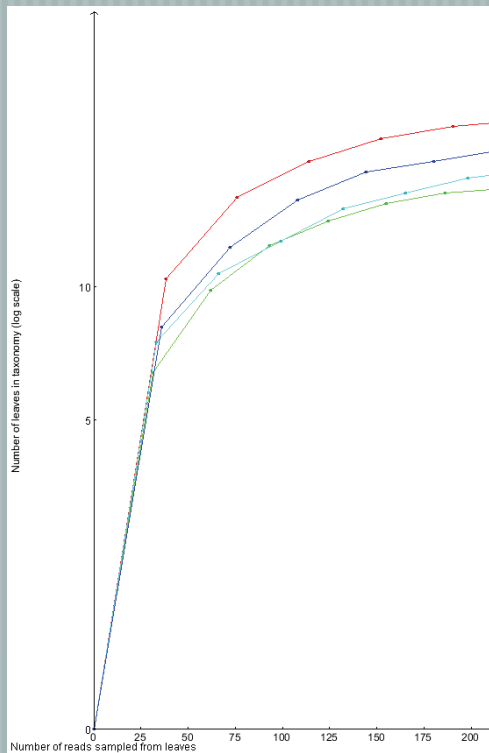


SAME CONDITION OF MANTOVA  
GRANA PADANO (MN) GRANA  
(plus LYSOZYME)





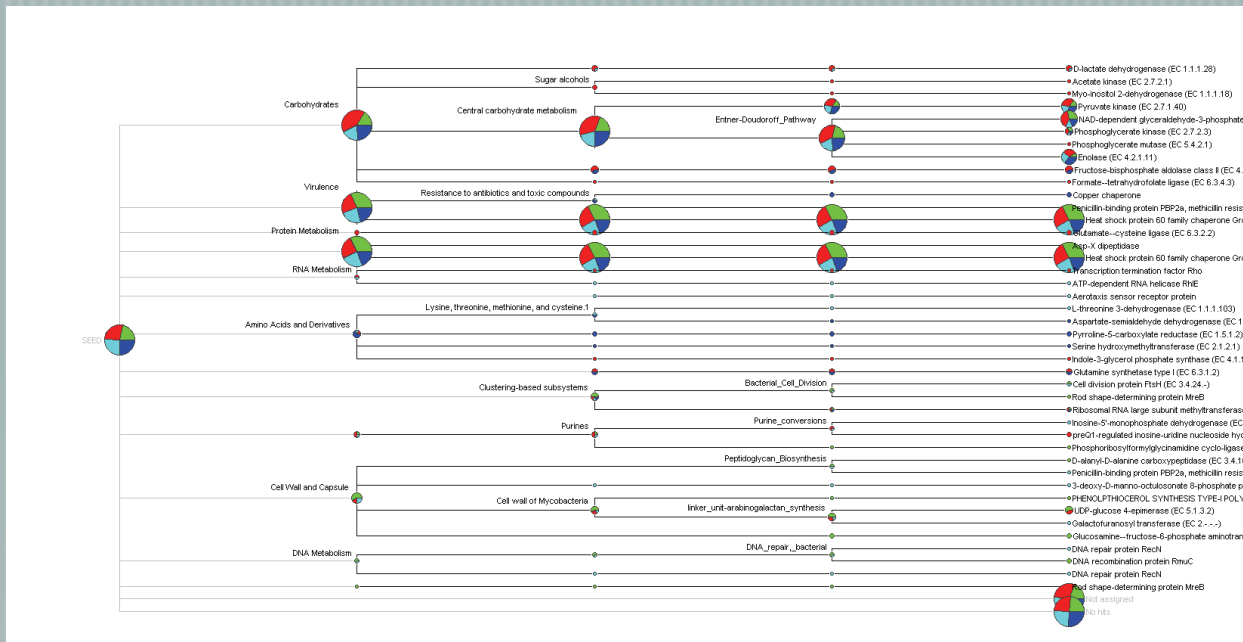
# Rarefaction and taxonomic analysis (experimental)



Legend (samples):

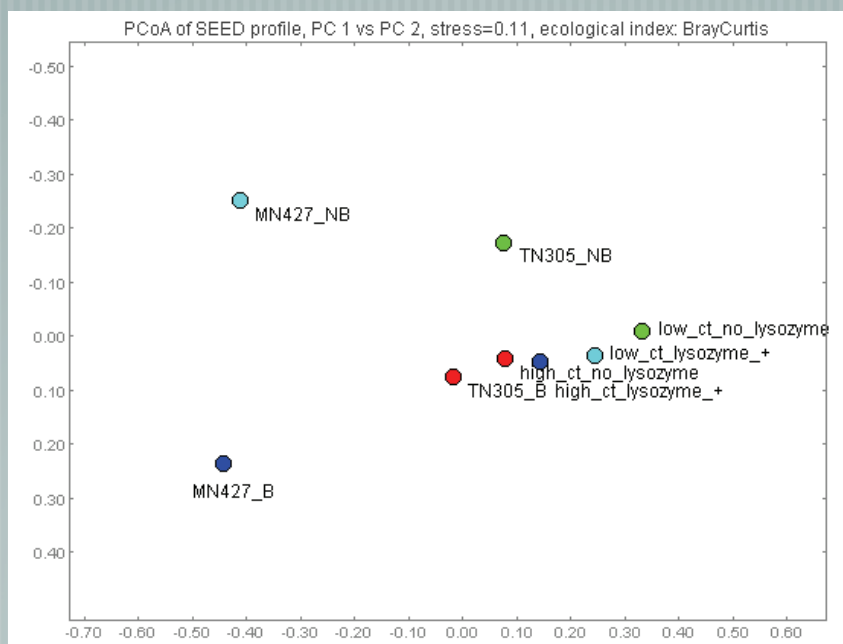
low\_ct\_no\_lysozyme high\_ct\_no\_lysozyme low\_ct\_lysozyme\_+ high\_ct\_lysozyme\_+

# SEED analysis (experimental)



# SEED\_PCoA

To compare functional metaproteome



# AND SO

- COMMERCIAL AND EXPERIMENTAL GP WITH 'DEFECTS' LOOK QUITE SIMILAR AT FUNCTIONAL MICROBIOME
- SELECTION OF NEW STRAINS OF LACTIC ACID BACTERIA TO COUNTERACT CLOSTRIDIA
- MORE INTEGRATION WITH METAGENOMICS IS NEEDED





**MILK PROTEOMICS CAN PROVIDE  
TECHNOLOGIES FOR DEVELOPMENT OF  
FOOD PRODUCTION IN PARTICULAR FOR  
FOOD SAFETY AND QUALITY**



*\*Take  
home message*

# OUR NETWORK

**H**  Human Proteome Project **CHIP** 



**iMO**   
Initiative on  
Multi Organism Proteomes

 **EuPA**  
EUROPEAN PROTEOMICS ASSOCIATION

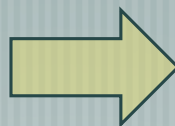
**ItPA** 

Italian Proteomics Association



# THANK YOU

AND HOPE TO SEE YOU IN  
**MILANO**



FEEDING THE PLANET  
ENERGY FOR LIFE



MILANO 2015



ITALIA  
EXPO MILANO 2015



**COST FARM ANIMAL PROTEOMICS FINAL MEETING  
MILANO 17-18 November-2014**