

Shelter use by Icelandic horses in the winter period



Janne Winther Christensen
Karen Thodberg
Department of Animal Science

DK legislation

- 24 h outdoor if access to shelter
- Size: $(2 \times \text{withers})^2$
- Entrance/partitions



Aim

- 1 vs. 2 entrances
- Partition in shelter

- Rank
- Weather
- Welfare consequences



Materials and methods

- 32 Icelandic horses
- 3 young and one old pr. group
- Nov. 2013 to Mar. 2014



Shelters



- $(2 \times \text{height at withers})^2 = \text{ca } 30 \text{ m}^2$

Design - 1st period

5

6

7

8

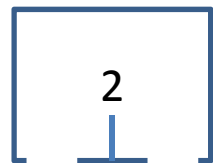
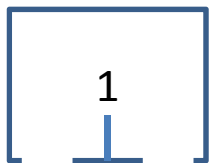
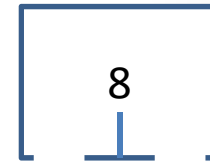
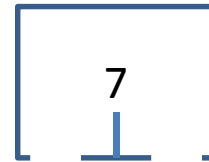
1

2

3

4

Design - 2nd period



Feeding outside



Cameras (every 10 min)





ScoutGuard

12.20.2013 13:57:03



BolyGuard

01.04.2014 09:19:17



BolyGuard

01.03.2014 07:15:02

Scans

- 2 days / week (9-15 h)
- 12 scans pr. group

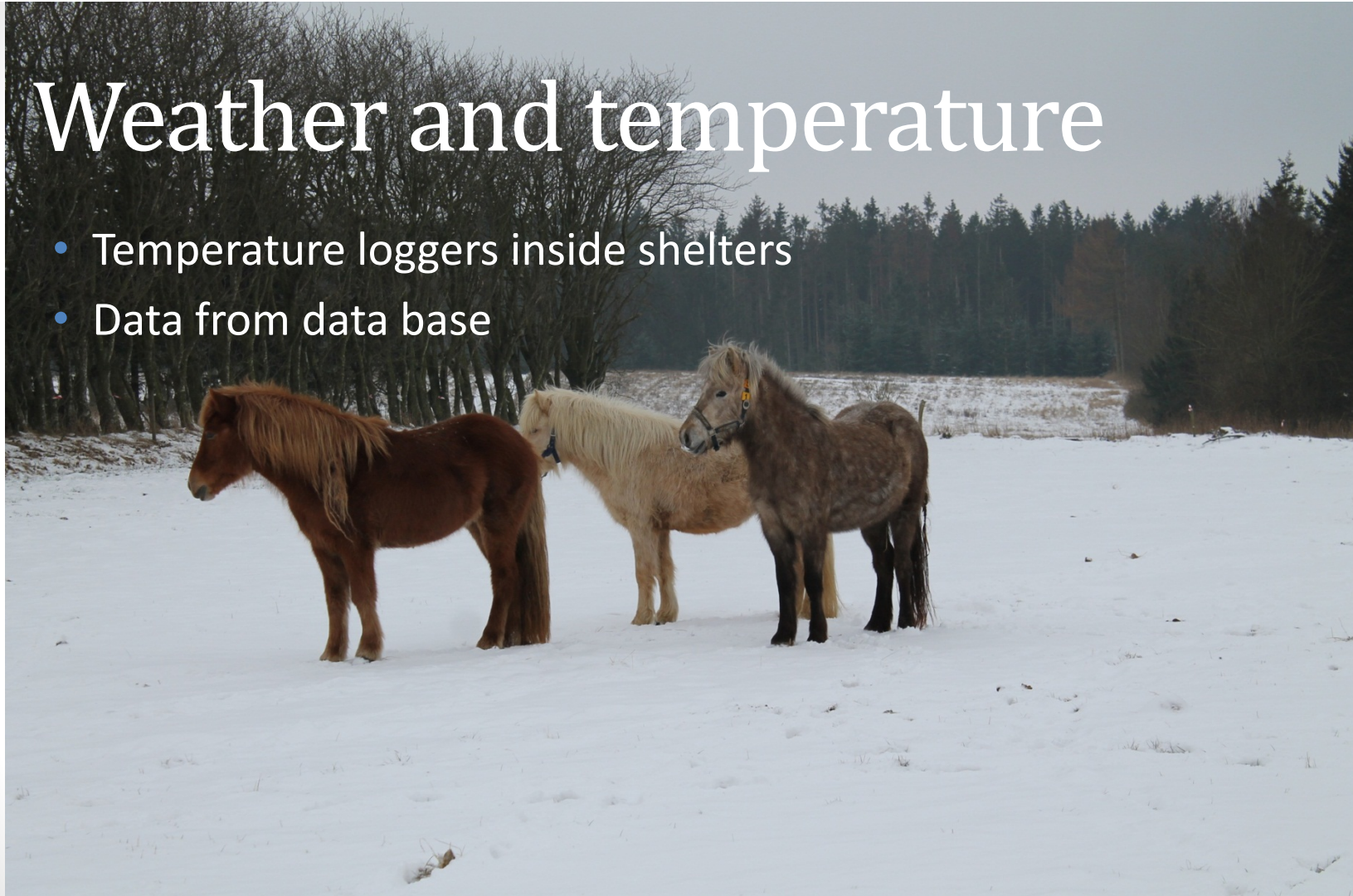






Weather and temperature

- Temperature loggers inside shelters
- Data from data base



Body condition score

- Henneke Horse Body Condition (scale 1-9)

- 1. period: 6.0 ± 0.1
- 2. period: 5.2 ± 0.1



Social rank



Social rank



Faecal Cortisol Metabolites



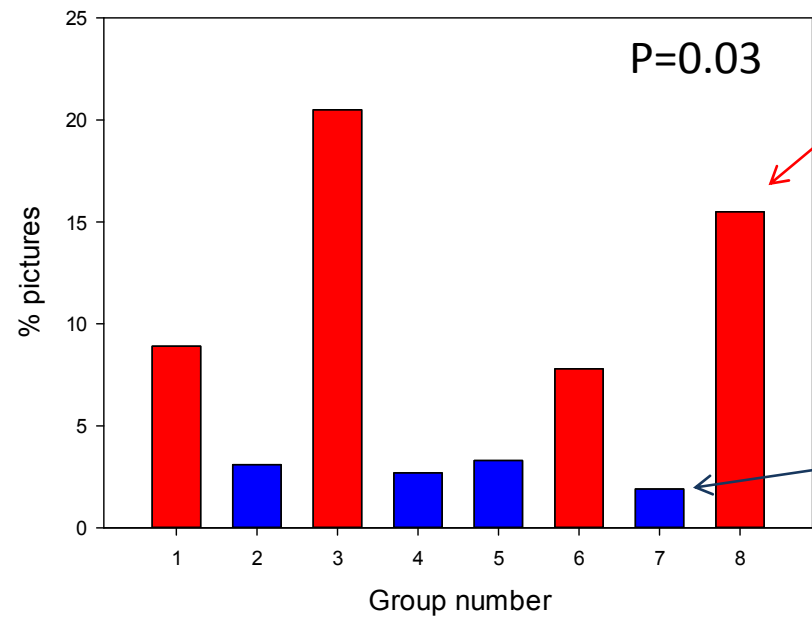
Results

- Overview of shelter use and FCM



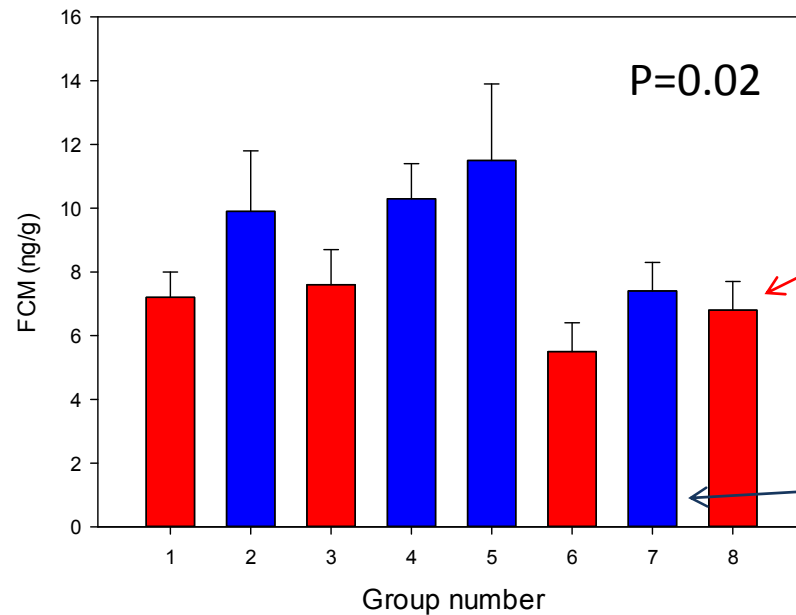
Results – 1st period

- % pictures with at least one horse in the shelter



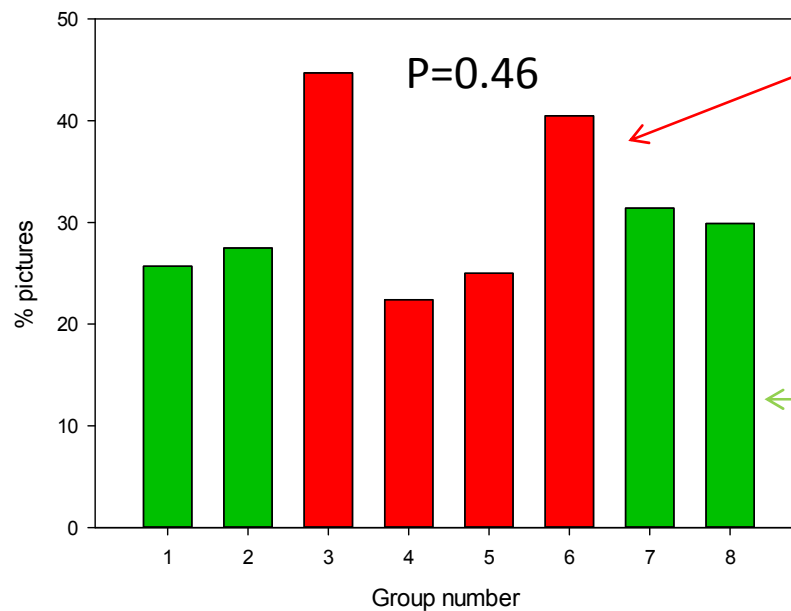
Results – 1st period

- Faecal Cortisol Metabolites (FCM)



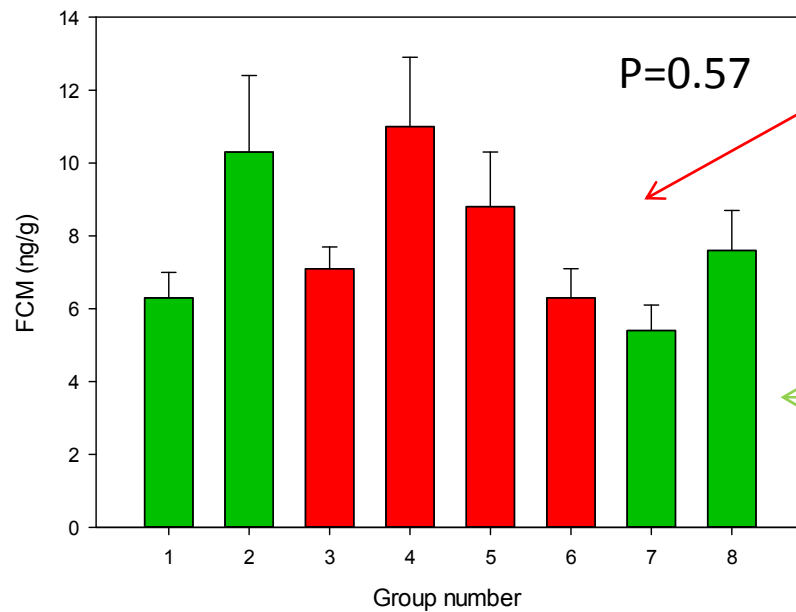
Results – 2nd period

- % pictures with at least one horse in the shelter



Results – 2nd period

- Faecal Cortisol Metabolites (FCM)



Remaining analysis

- Individual shelter use
- Activity in shelter
- FCM in relation to use
- Rank in relation to use
- Weather conditions
- Activity scans



Conclusion

- Number of entrances affects shelter use and FCM levels in Icelandic horses
- Partitions in the shelters did not affect shelter use, nor FCM levels





BolyGuard

02.02.2014 16:06:34



ScoutGuard

02.13.2014 16:22:56





ScoutGuard

12.23.2013 12:45:54

