



Beef production comparison

Sergio De Zen, PhD

Professor at University of São Paulo (USP)

Beef Economy Research team of Cepea/Esalq/USP:

Thiago Bernardino de Carvalho, Ms

Daniel Bedoya Velasco

Mariane Crespolini

Graziela Correr

Wagner Hiroshi Yanaguizawa



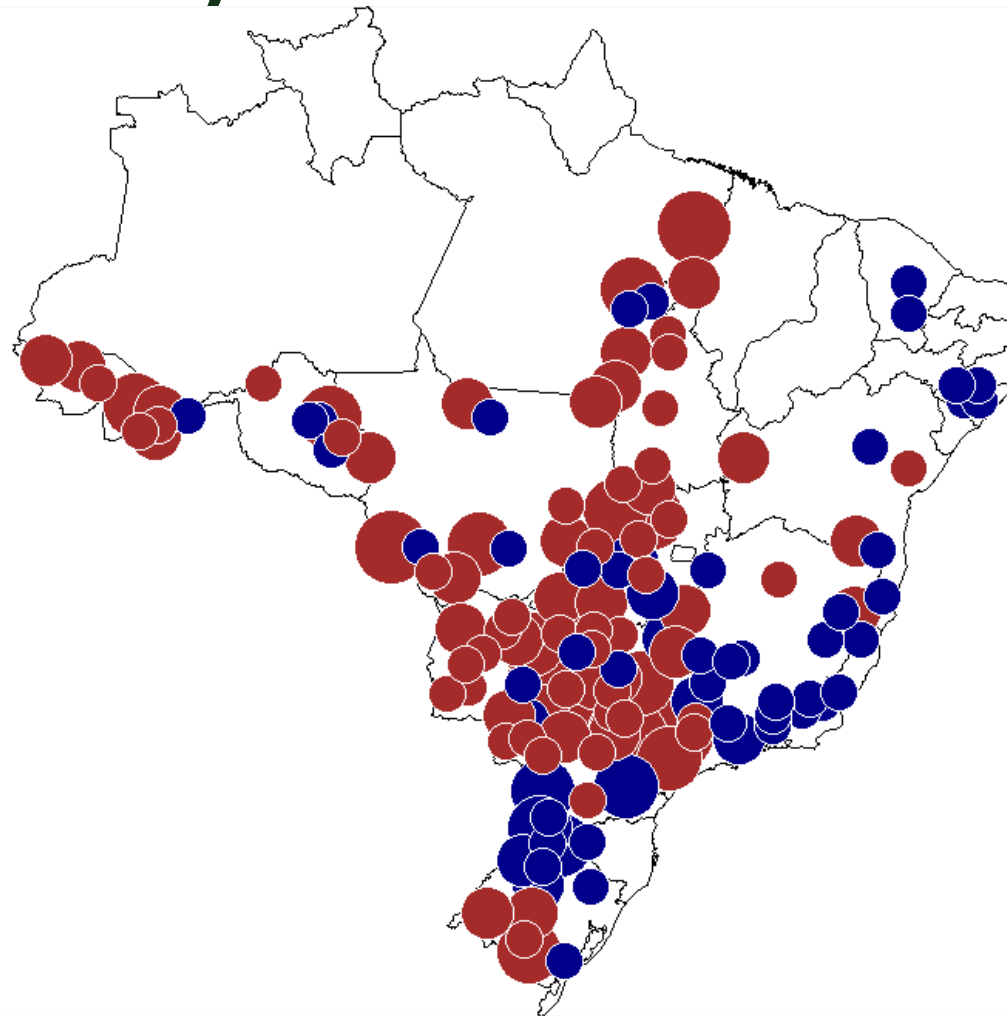
SCHEDULE

- NATIONAL COMPARISON: BIOMES
 - Slaughter rates;
 - Mortality rate weaning;
 - Animals/Labours;
- INTERNATIONAL COMPARISON
 - Cow calf
 - Beef Finishing



How is Brazilian production???

Beef and Milk Typical Farms – Cepea (2003 – 2014)



Category



Beef
Milk

Elabo

Distribuição Geográfica Brasileira

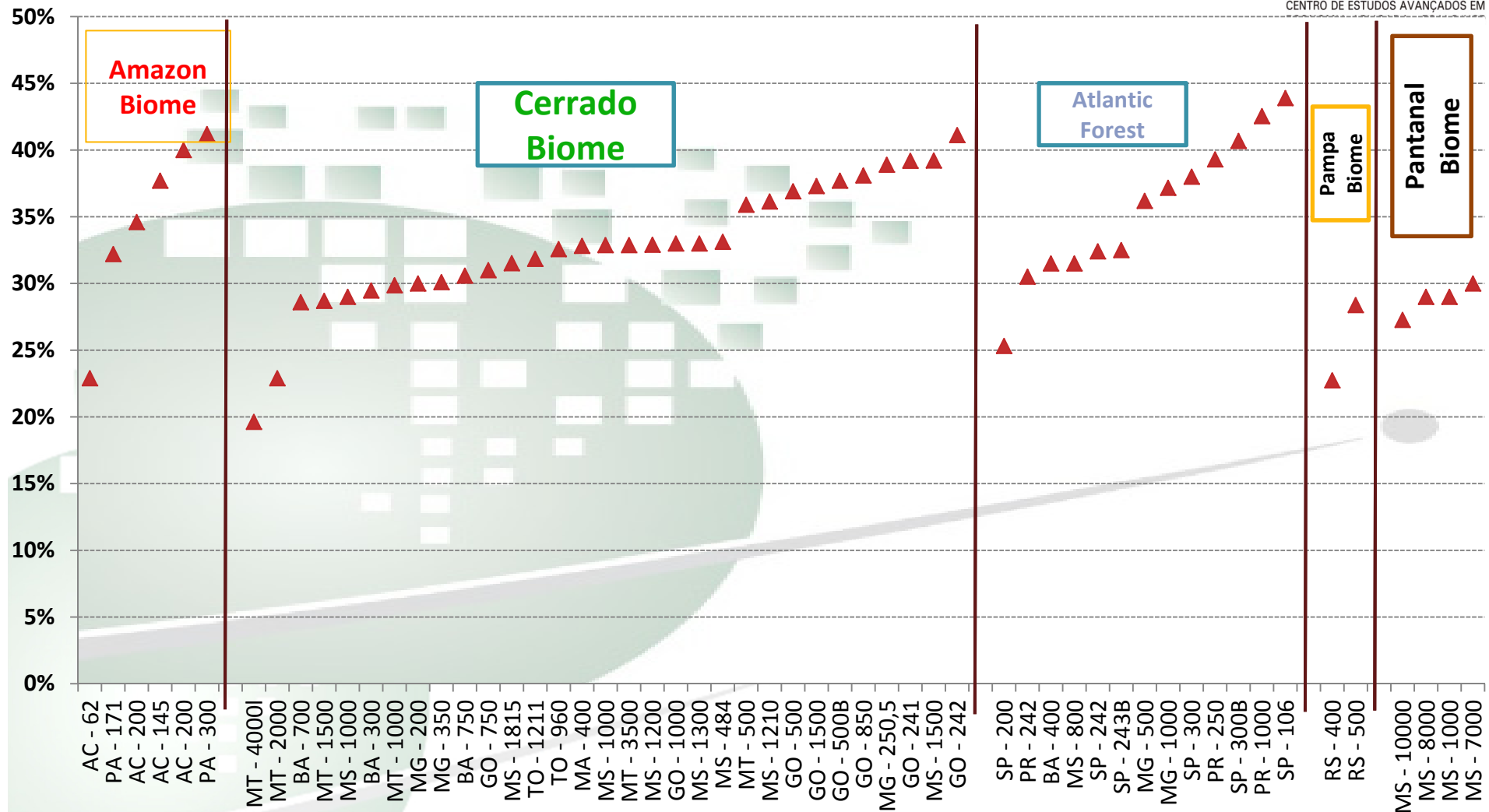


	Million of ha	%
Pasture	170	20,2
Conservation's Unity	176	20,7
Indians Lands	118	13,9
Social Lands (MST)	77	9,0
Cash Crop Lands	72	8,4
Cultivated Forests	5	0,6
Lands for another use	160	18,8
Unexplored Lands Available for Agriculture (not consider Amazonia Forest)	106	12,5
Total	851	100

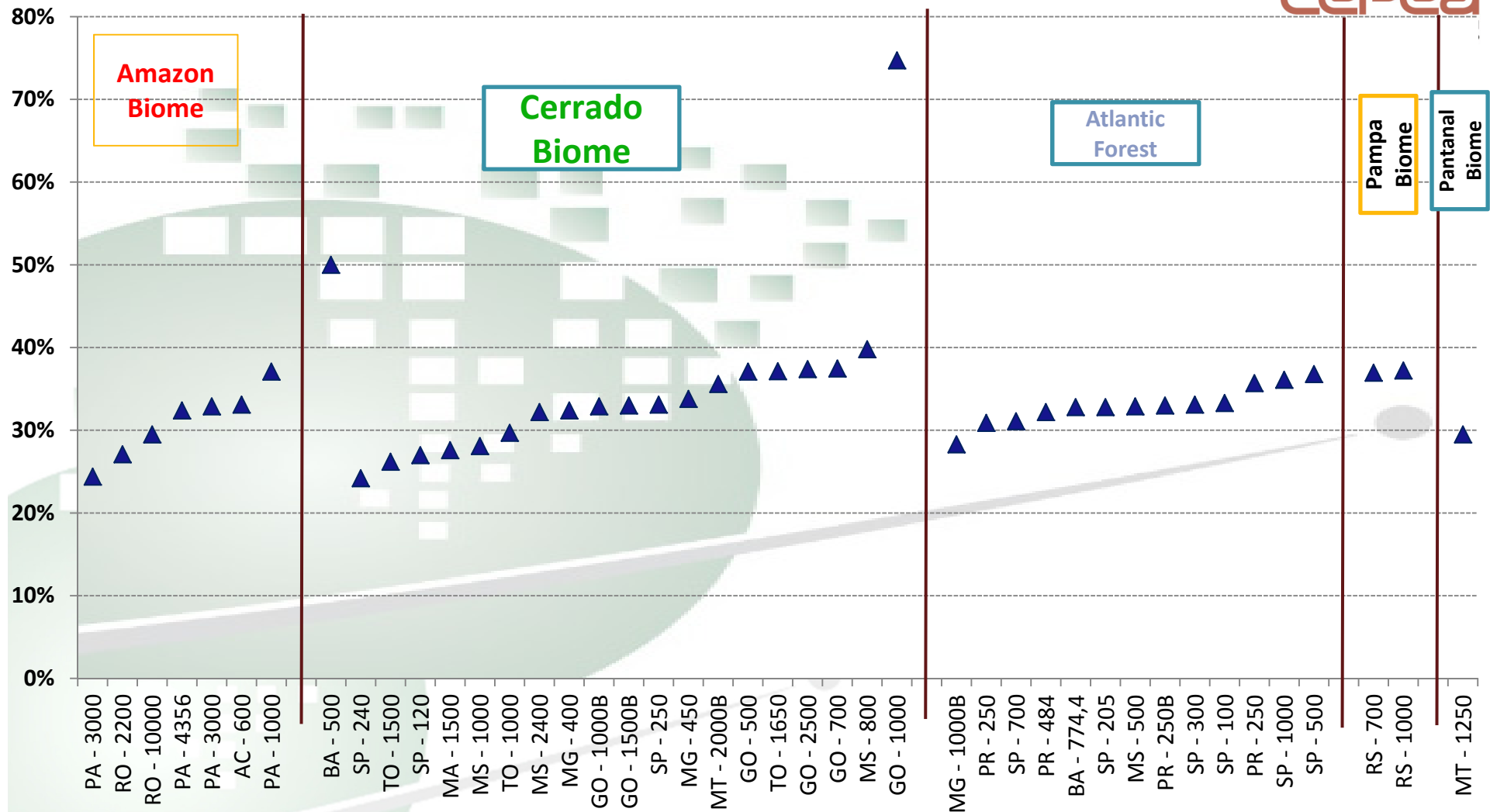
Source: IBGE, MAPA, Conab e ABRAF.

*** 106 million of ha to produce others things (ethanol, cash crops, etc), without beef production**

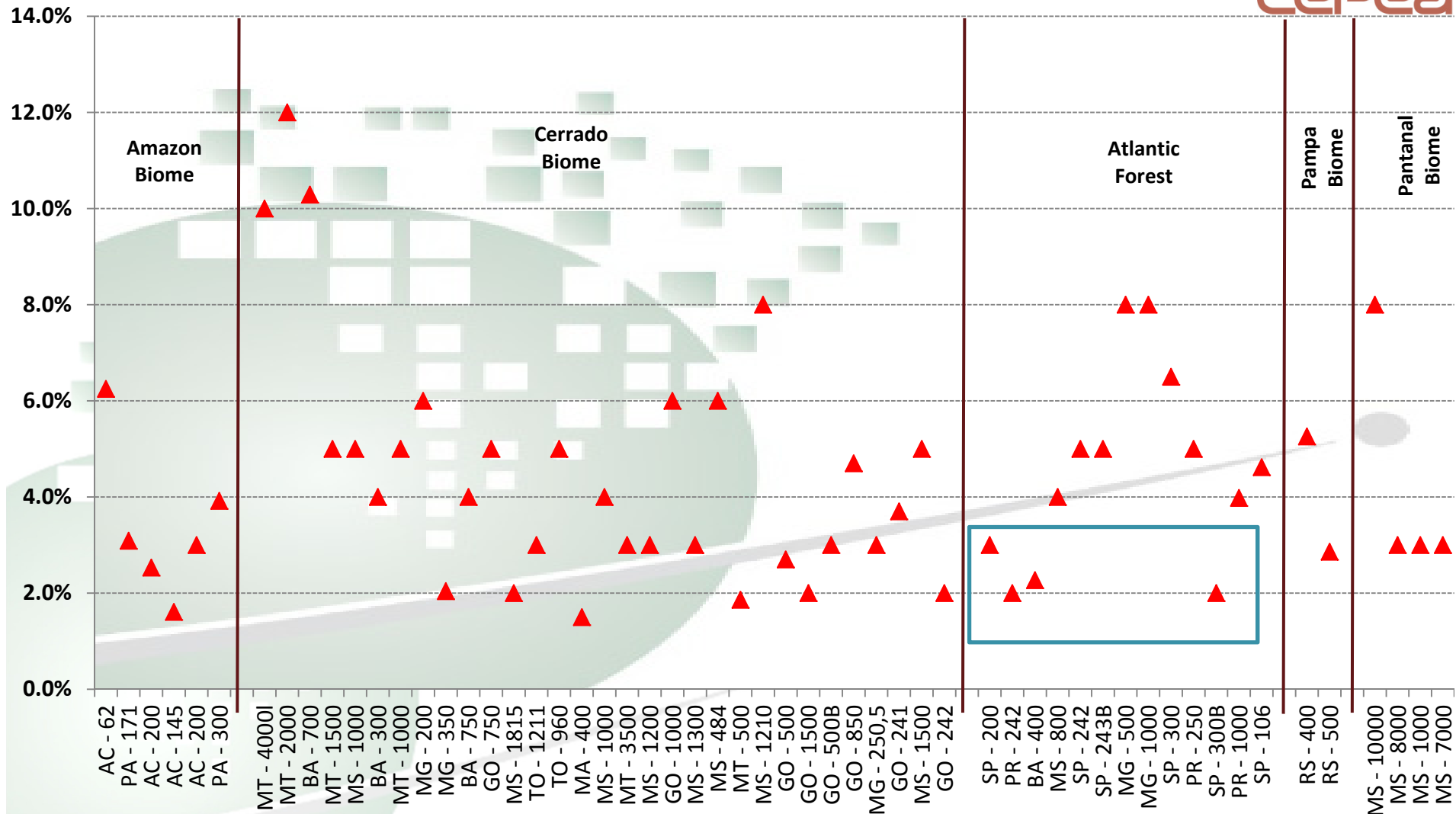
Slaughter rate – Cow Calf



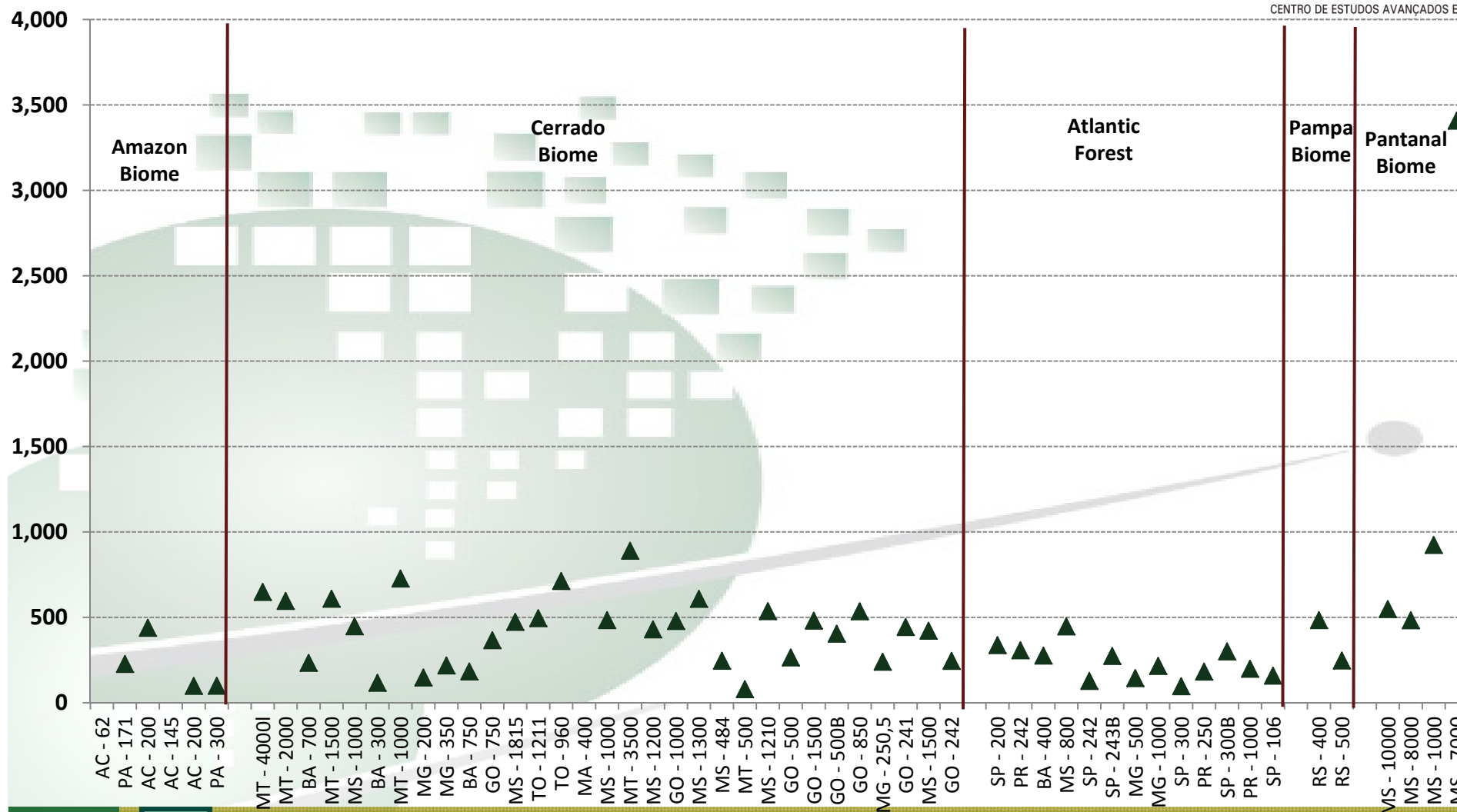
Slaughter rate – Beef Finishing



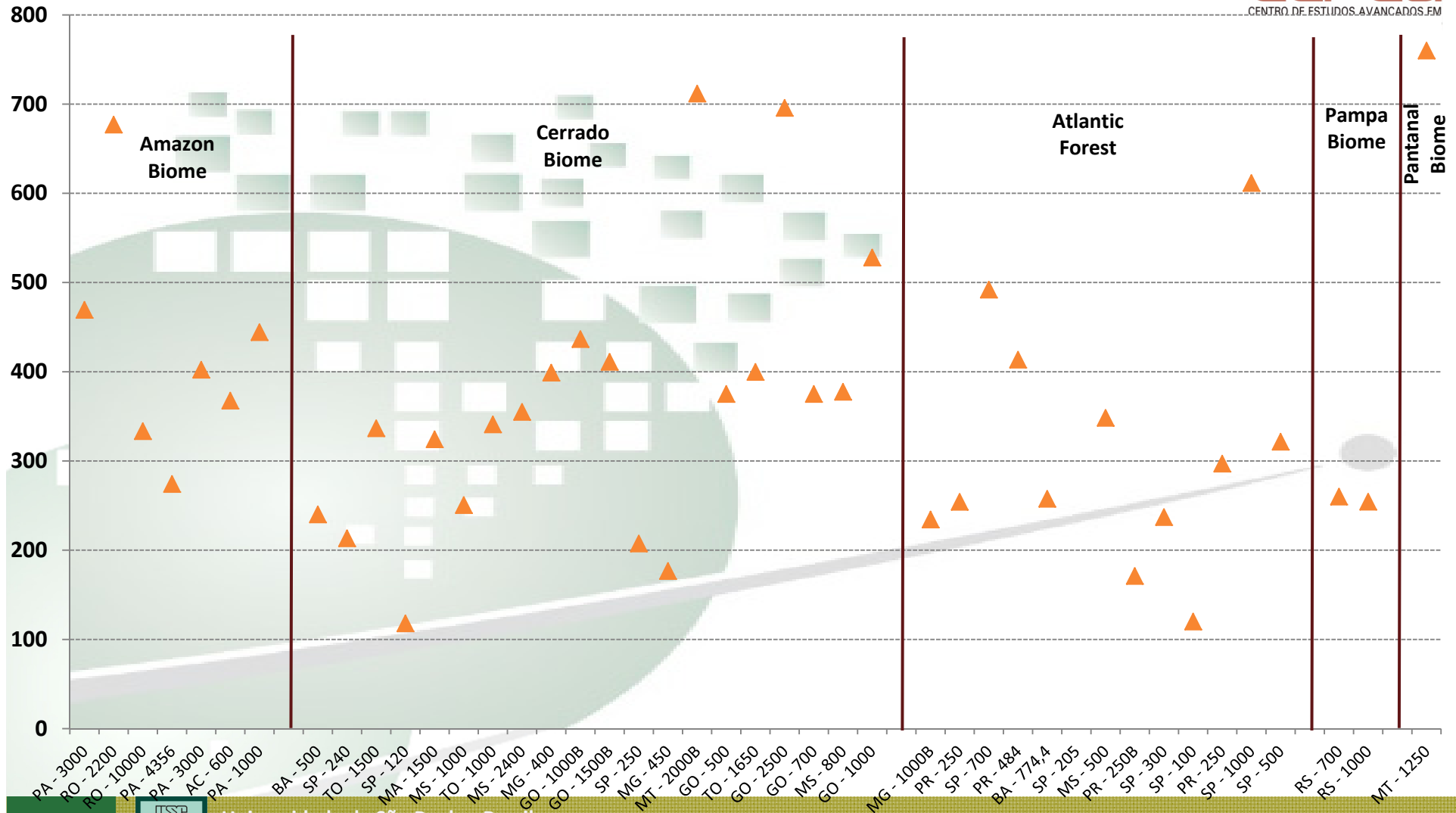
Mortality rate weaning



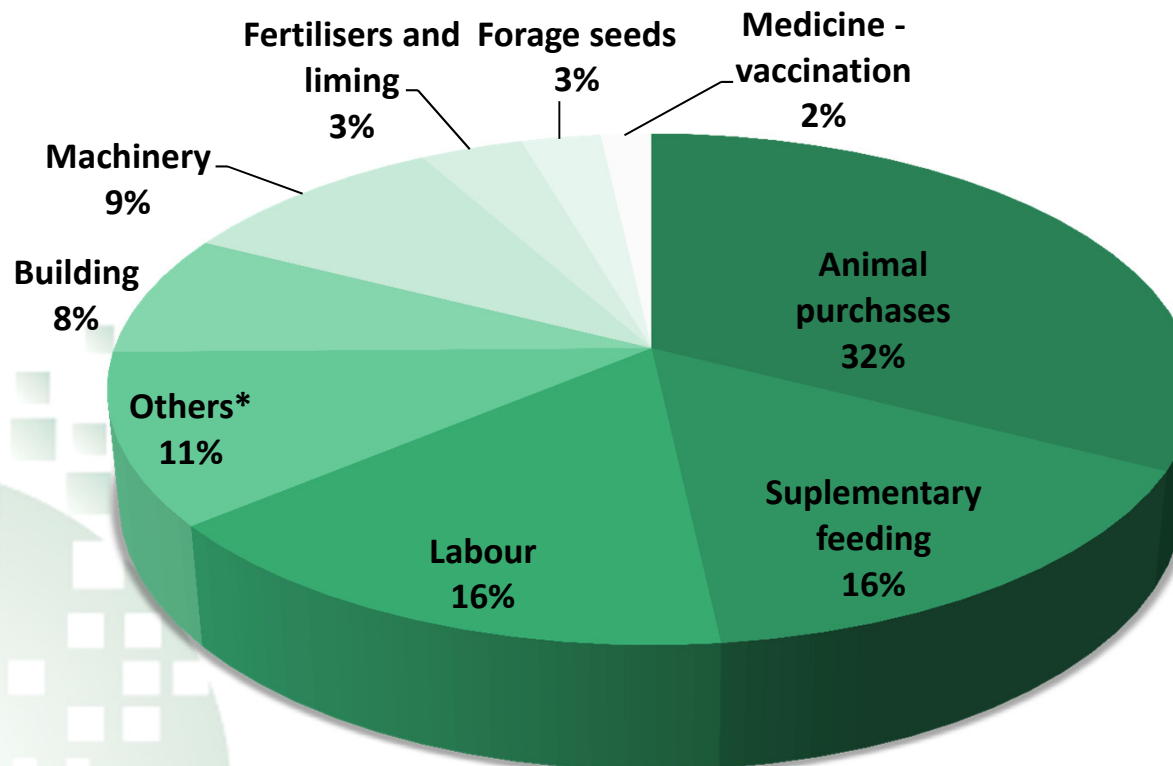
Animals/Labours: Cow Calf



Animals/Labours: Beef Finishing



AVERAGE COMPOSITION OF BRAZILIAN COSTS (INCLUDING COW CALF AND BEEF FINISH PRODUCTION)



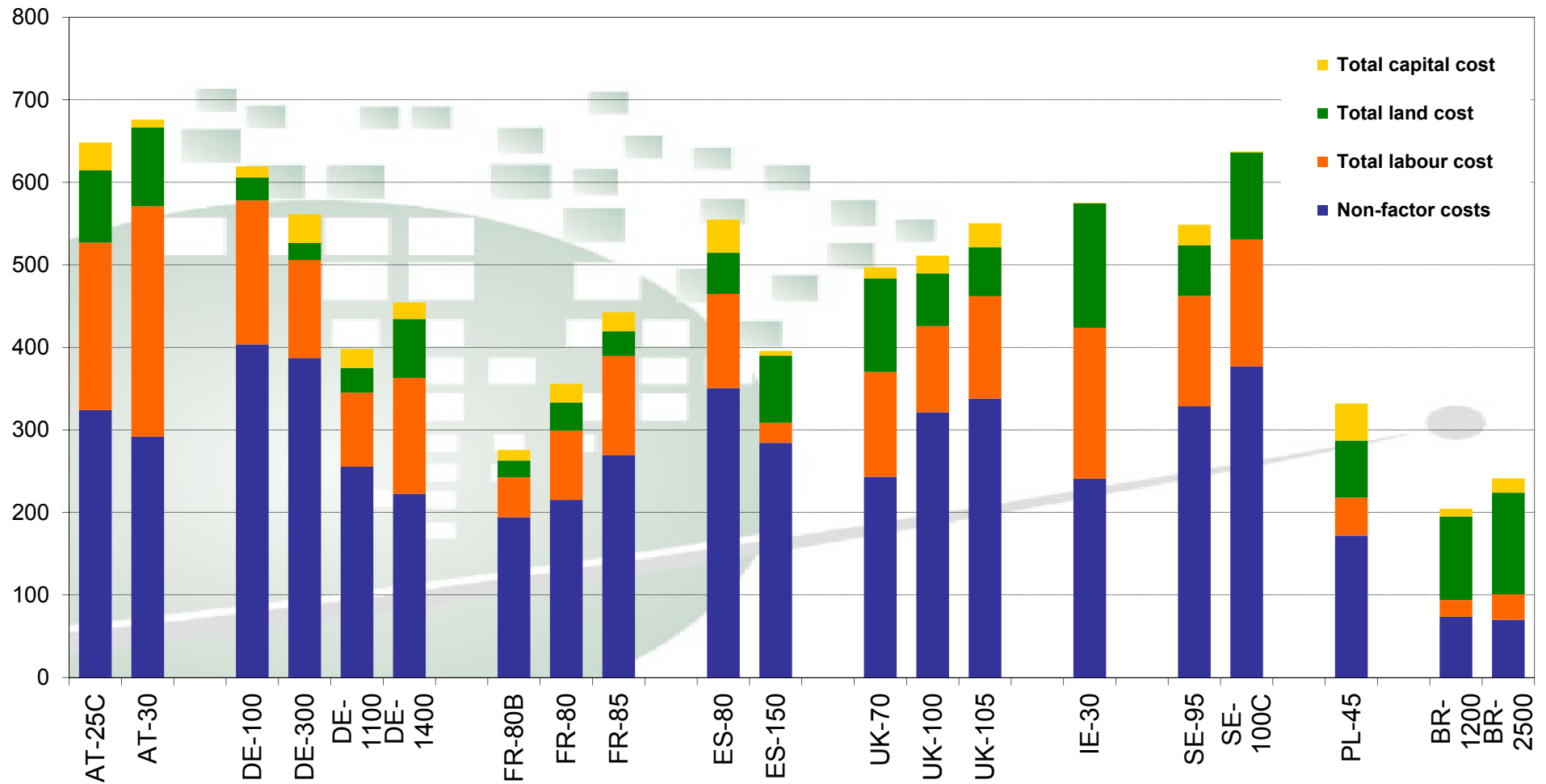
*Energy; Farm taxes and duties; Utilities; Agrochemicals; Medicine - general, parasite control, antibiotics; Insemination; Others.

Fonte: CEPEA/USP e CNA.

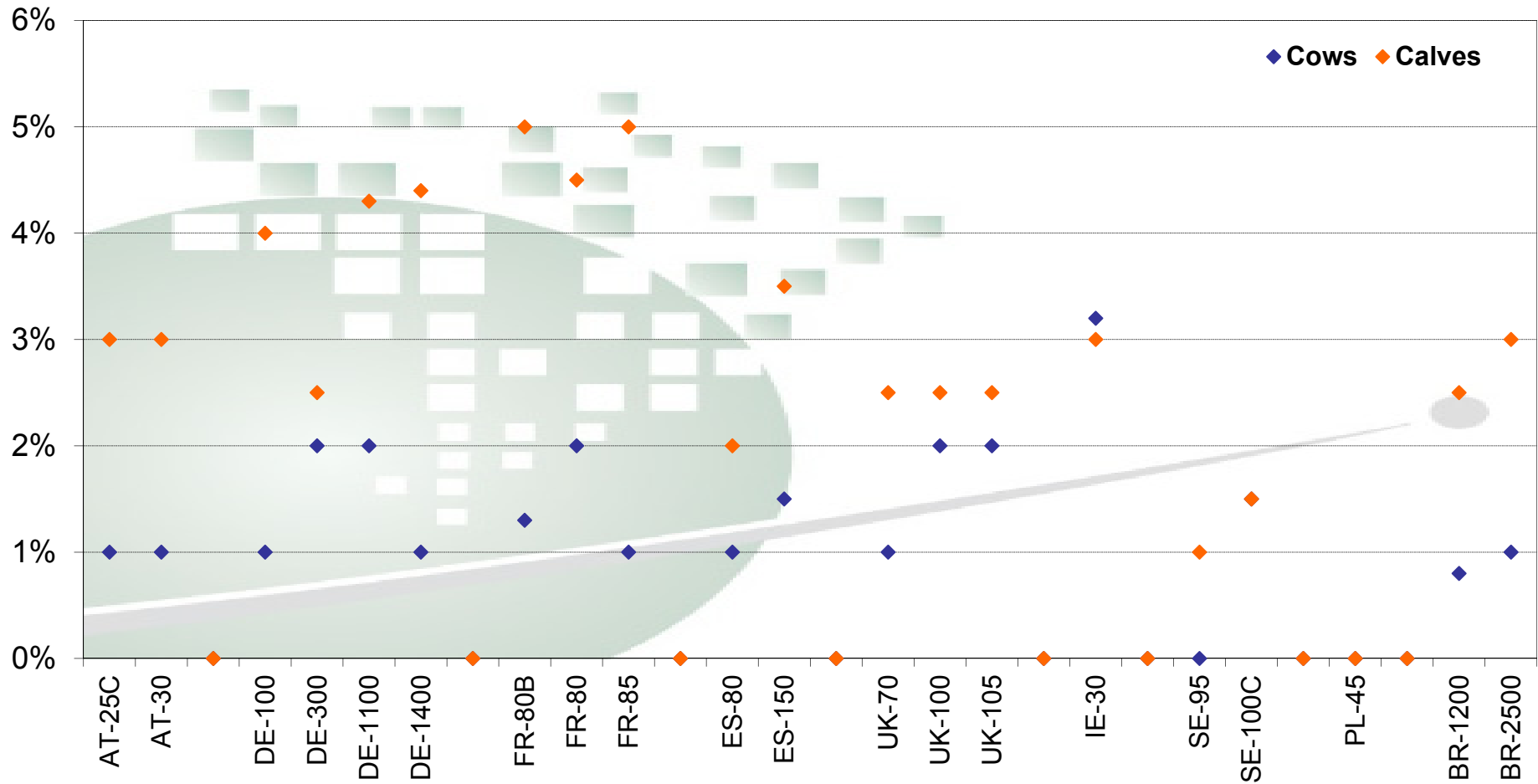
INTERNATIONAL COMPARISON

Cow Calf

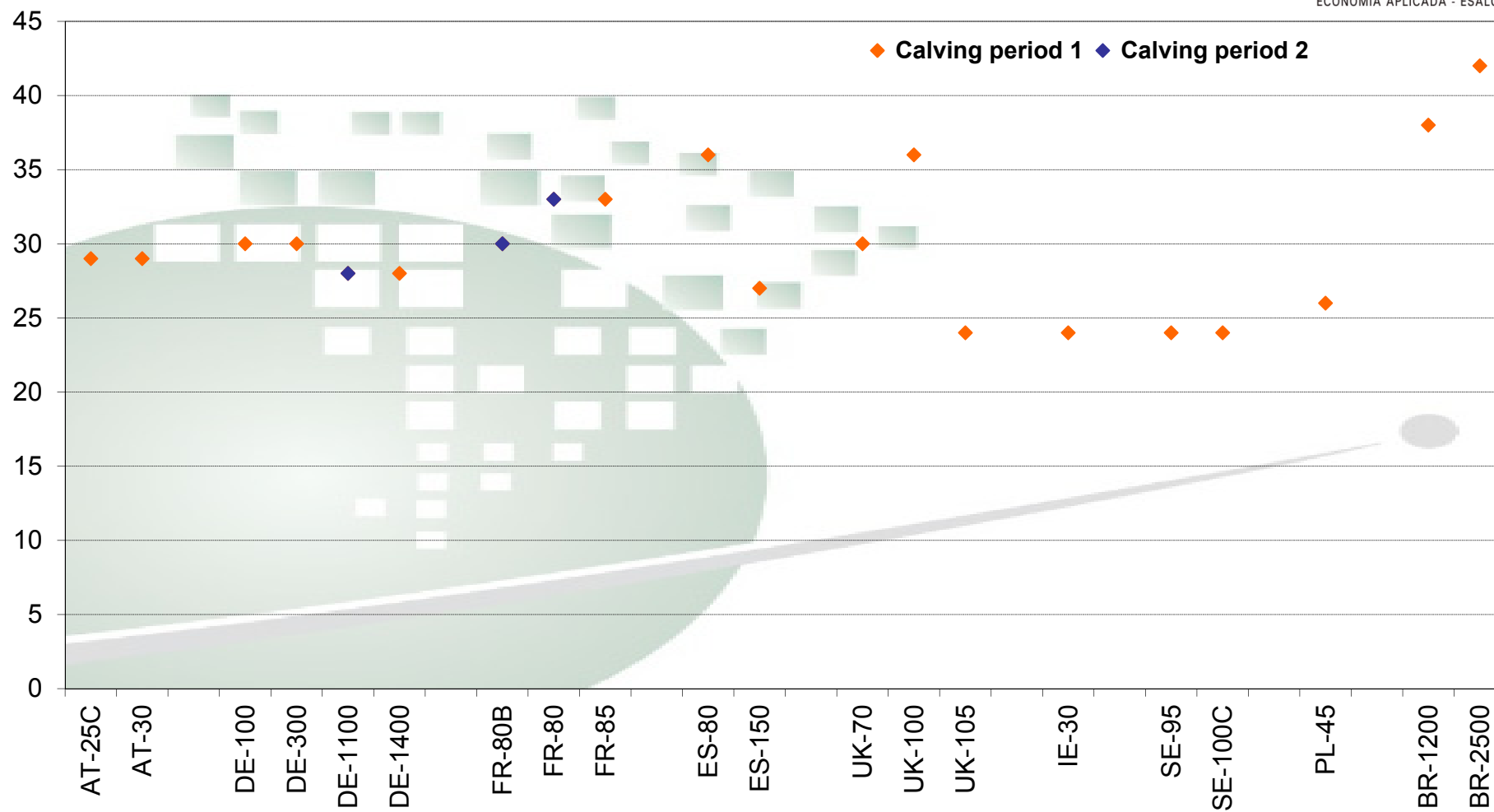
Cost of the cow-calf enterprise by factor and non-factor costs



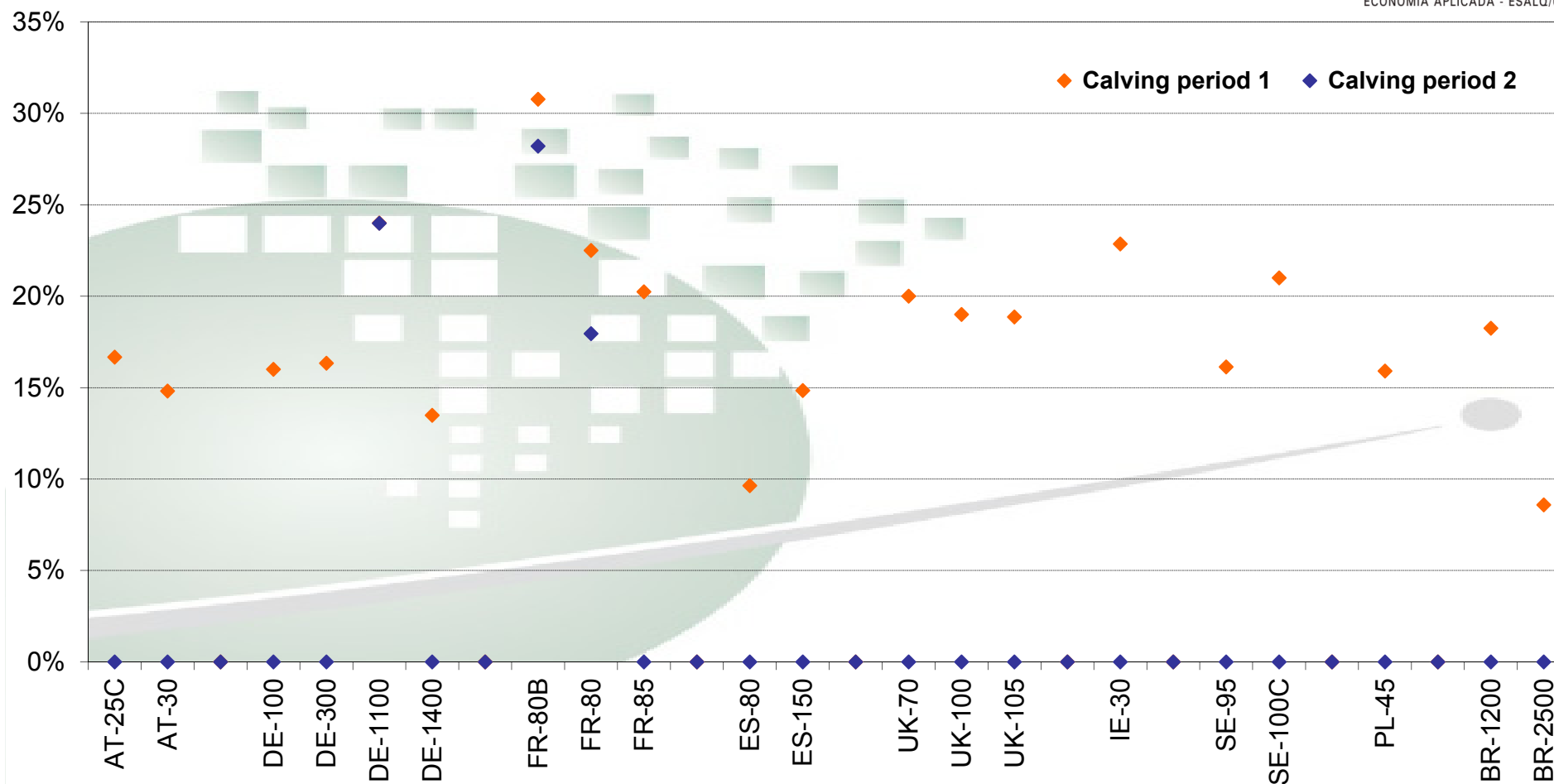
Losses (cows and calves)



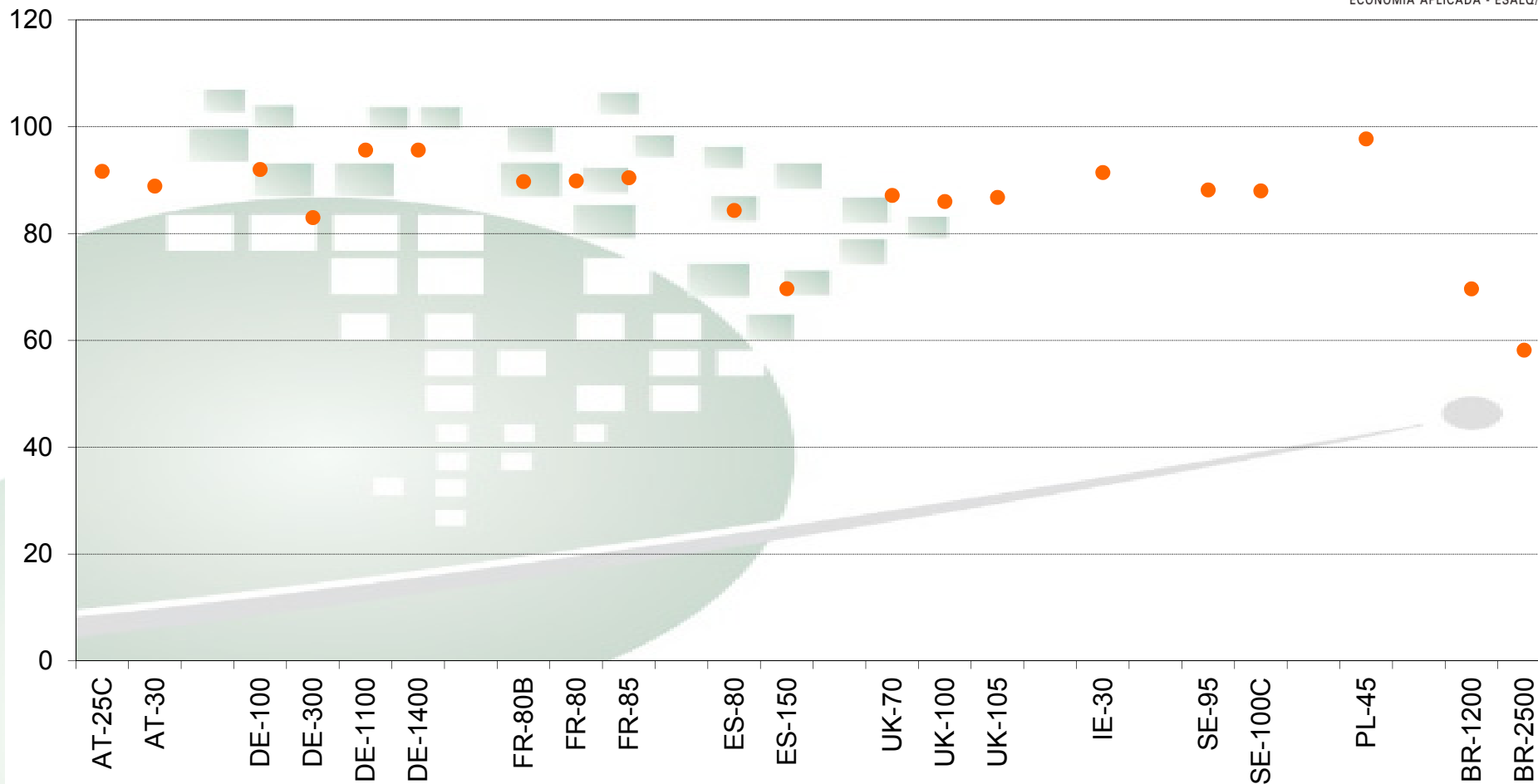
Age at first calving (months)



Replacement rate



Weaned calves per 100 cows and year

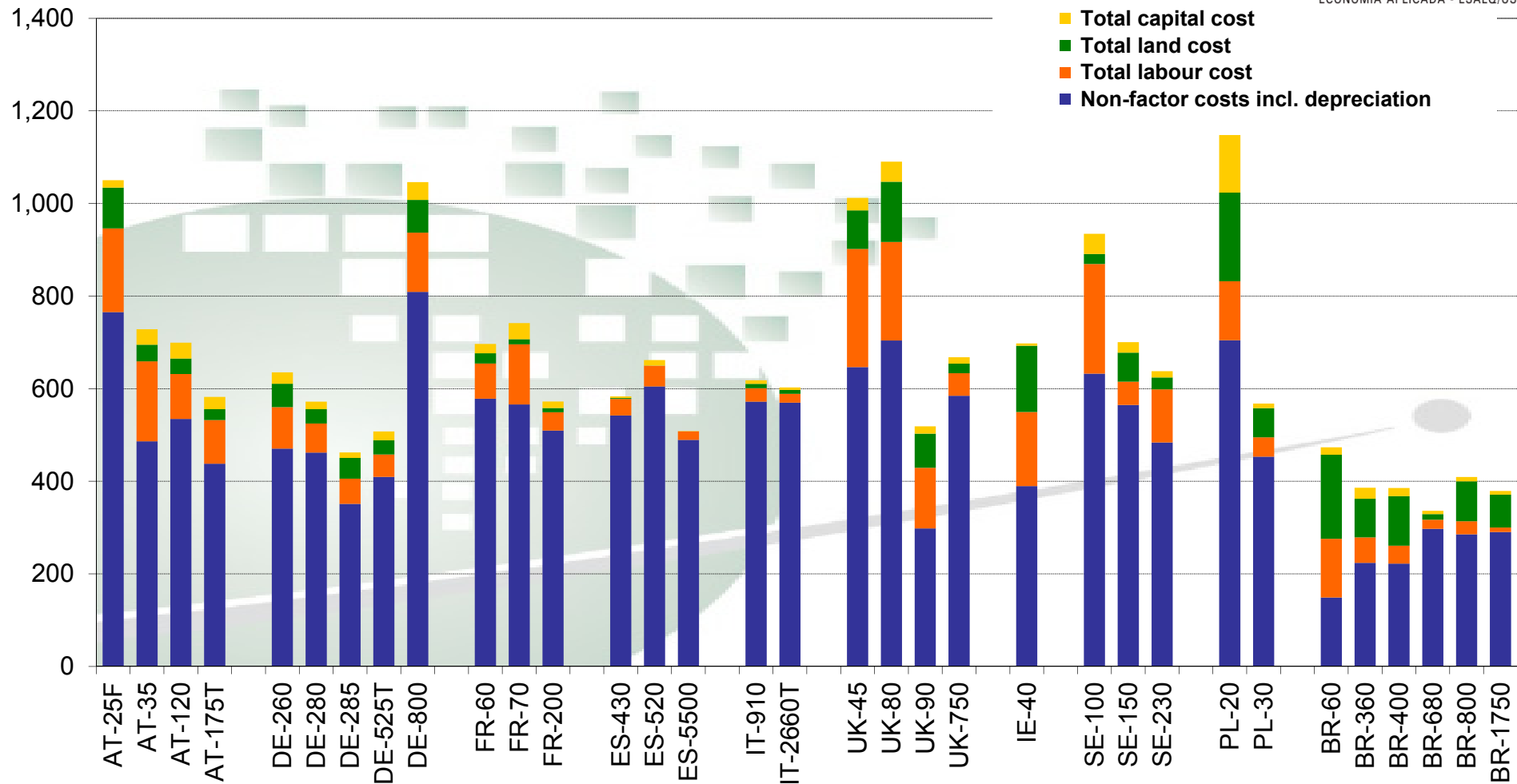


INTERNATIONAL COMPARISON

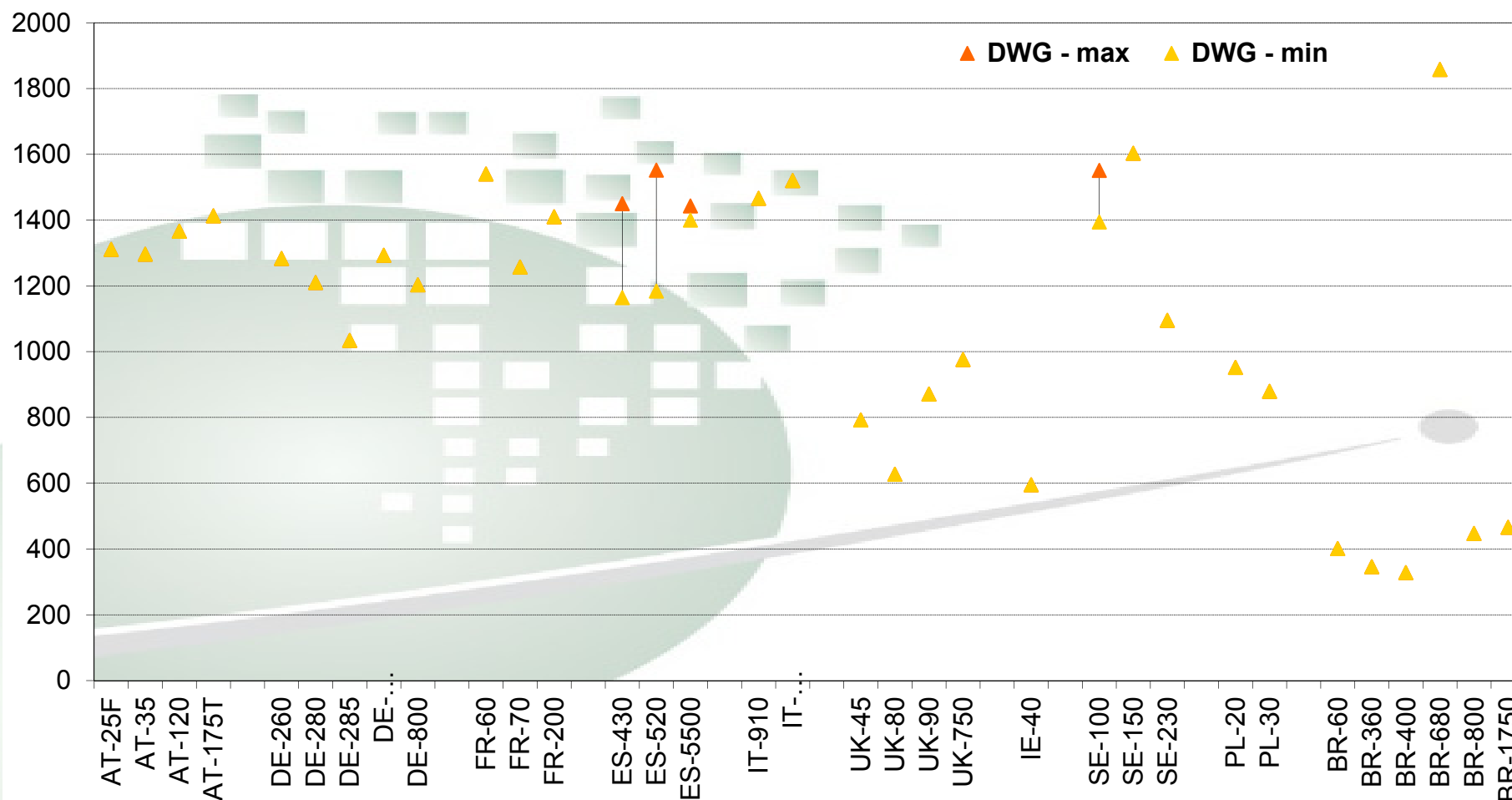
Beef Finishing

Total cost of the beef enterprise by factor and Non-factor costs

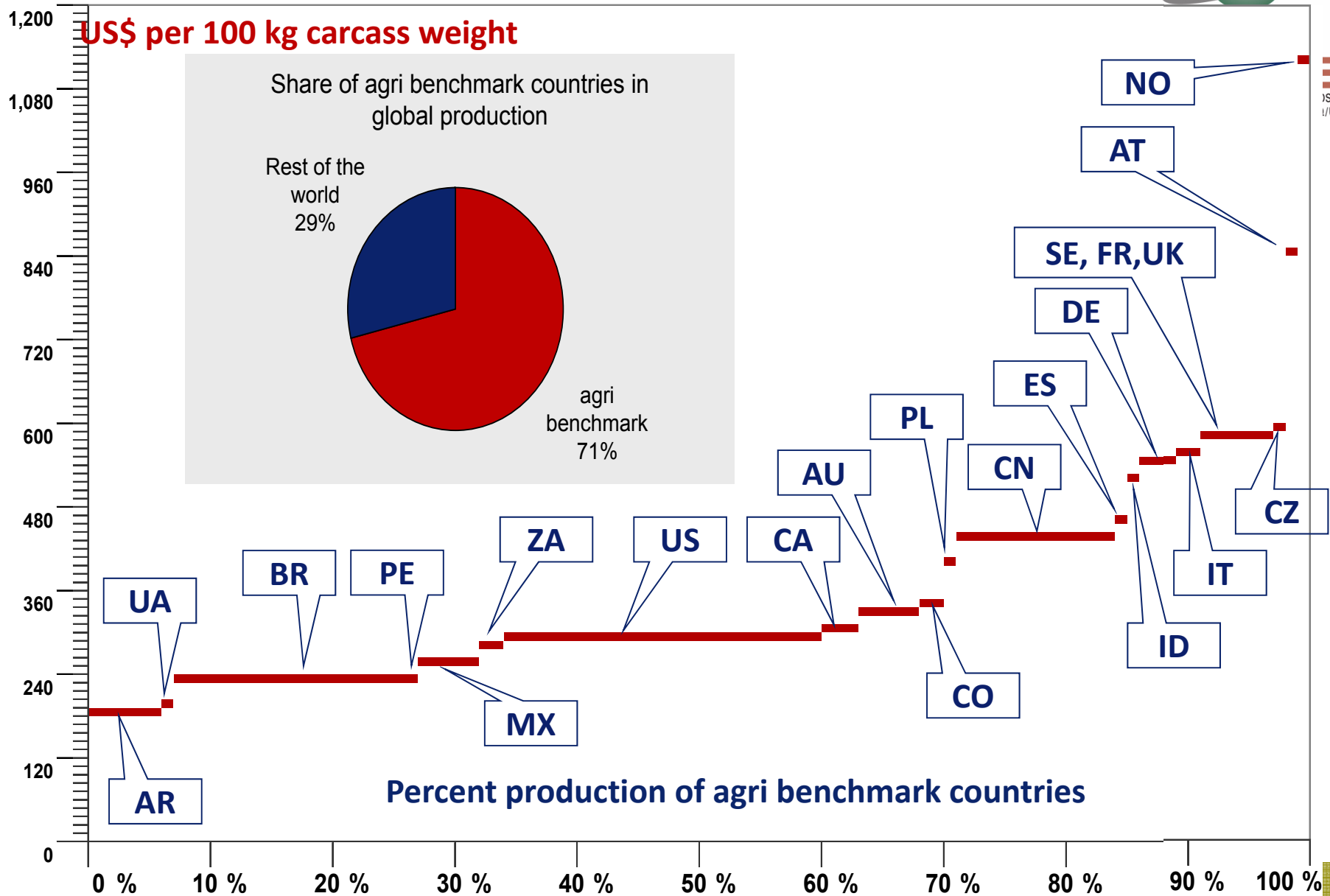
US\$/100kg of carcass



Daily weight gain (g/day)



Supply



IS EM
I/USP

Fonte: Agribenchmark, 2010

ESALQ

Centro de Estudos Avançados em Economia Aplicada – www.cepea.esalq.usp.br

PICTURE: EXTENSIVE PASTURE – PARÁ STATE



CEPEA
CENTRO DE ESTUDOS AVANÇADOS EM
ECONOMIA APLICADA - ESALQ/USP



PICTURE: EXTENSIVE PASTURE – PARÁ STATE – AMAZONIAM REGION



ROTATIONAL GRAZING IN THE REGION OF BARREIRAS IN BAHIA STATE - CERRADO



Beef Cattle Farm: South Mato Grosso - cerrado



IPEA
TUDOS AVANÇADOS EM
PLICADA - ESALQ/USP



PICTURE: ROTATIONAL GRAZING IN THE REGION OF BARREIRAS IN BAHIA STATE – CERRADO



CEPEA
CENTRO DE ESTUDOS AVANÇADOS EM
ECONOMIA APLICADA - ESALQ/USP





OBRIGADO

Thank you!!!!

Sergio De Zen, PhD

Professor at University of São Paulo (USP)

Research at Center for Advanced Studies on Applied Economics (Cepea/Esalq/USP)

sergdzen@usp.br
+55 19 3429 8800

Av. Centenário, 1080, Piracicaba . SP
CEP: 13.416 – 0000
www.cepea.esalq.usp.br