



EAAP 2014

**TECHNOLOGICAL ADVANCES IN FUR
GRADING**

02-09-2014

KOPENHAGEN
FUR



KOPENHAGEN FUR

KOPENHAGEN
FUR

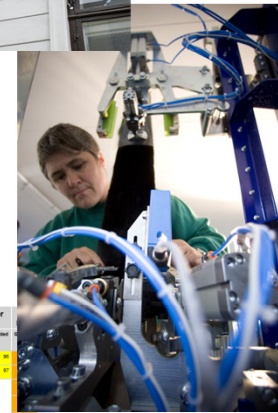
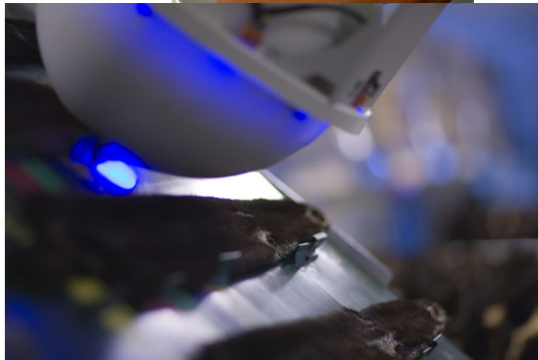


ORGANISATION

KOPENHAGEN
FUR



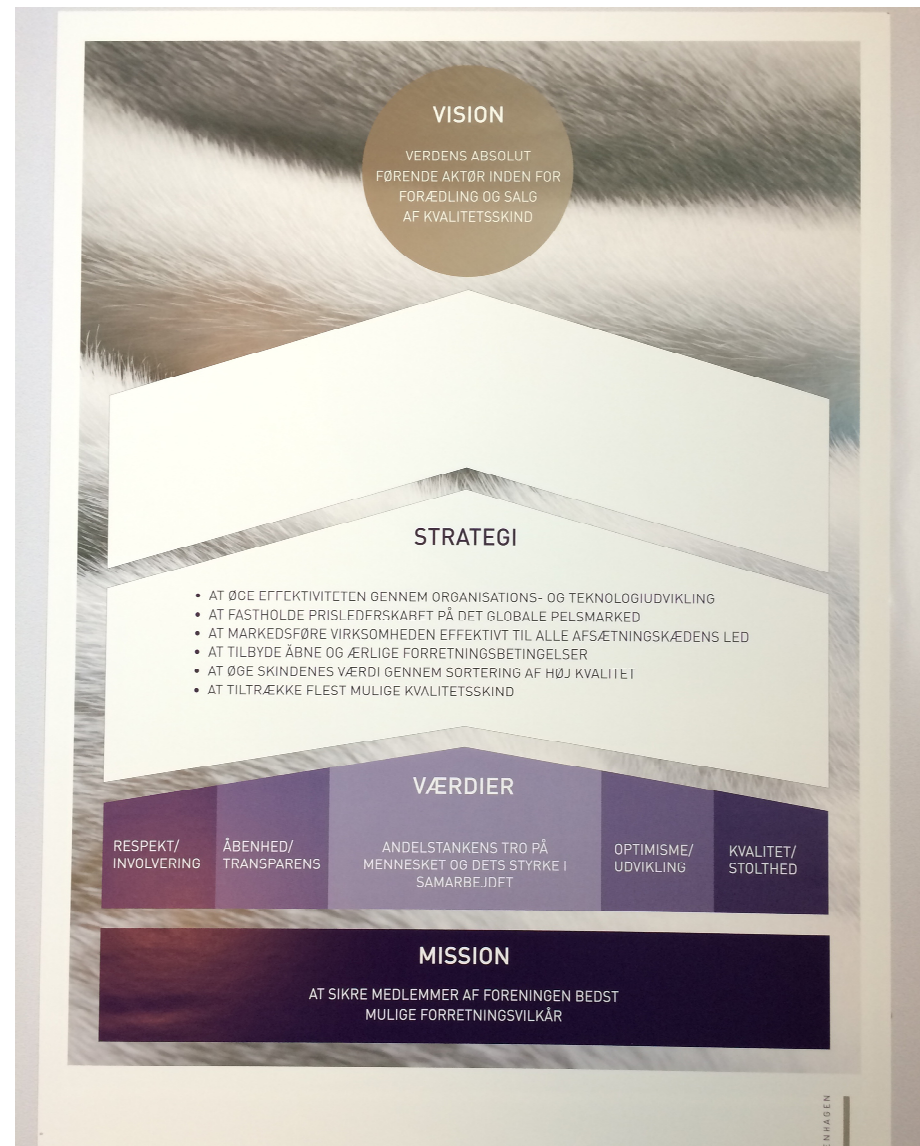
KOPENHAGEN
FUR



Temporada 2012										Número de valor			
Tipo	Preventa en %	Grid %	Plan %	% Realiza	Prems Autoriza	Subvenc gobierno	Suma de valor	Utilización Tuberos	Metric M2	Color	Capaci M ²	Tal %	Control
Black minkes (11)	84	25%	15	31	100	100	100	100	100	100	100	100	100
Black minkes (21)	102	48%	75	20	100	100	100	100	100	100	100	100	100
Mohogany minkes (118)	200	37%	75	12	100	100	100	100	100	100	100	100	100
Mohogany minkes (218)	465	45%	201	30	100	100	100	100	100	100	100	100	100
Chocolate minkes	204	76%	110	10	100	100	100	100	100	100	100	100	100
Chocolate minkes	190	86%	110	10	100	100	100	100	100	100	100	100	100
Fox minkes (21)	6	83%	10	100	100	100	100	100	100	100	100	100	100
Fox minkes (22)	4	100%	10	100	100	100	100	100	100	100	100	100	100
Fox Saguaminkes (17)	103	80%	81	10	100	100	100	100	100	100	100	100	100
Fox Saguaminkes (27)	167	47%	75	10	100	100	100	100	100	100	100	100	100
Soft minkes (20)	110	81%	130	10	100	100	100	100	100	100	100	100	100
Soft minkes (40)	164	44%	71	10	100	100	100	100	100	100	100	100	100
Shedless minkes (18)	762	77%	681	10	100	100	100	100	100	100	100	100	100
Shedless minkes (28)	871	82%	417	10	100	100	100	100	100	100	100	100	100
White minkes (41)	2	80%	10	100	100	100	100	100	100	100	100	100	100
White minkes (11)	60	88%	44	10	100	100	100	100	100	100	100	100	100
White minkes (21)	27	74%	20	10	100	100	100	100	100	100	100	100	100
Black Cross minkes (24)	872	86%	748	10	100	100	100	100	100	100	100	100	100
Black Cross minkes (424)	723	78%	588	10	100	100	100	100	100	100	100	100	100

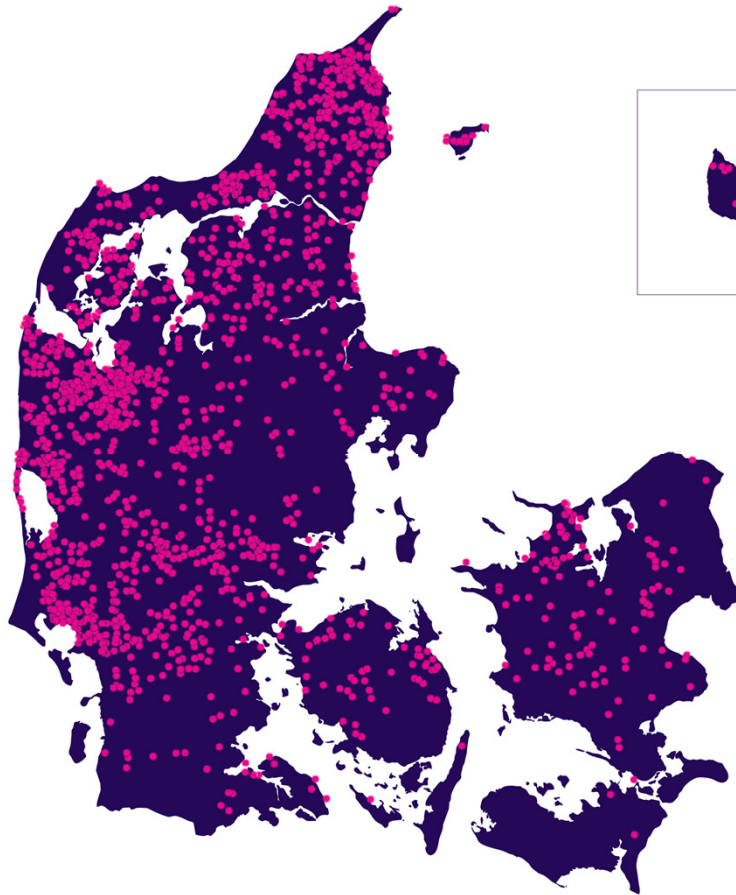


MISSION / BUSINESS STRATEGY



MINK FARMS ON THE MAP OF DENMARK

KOPENHAGEN
FUR



- The annual production of mink skins is 18 million
- Breeding stock 3.3 million females



THE MINK

- Mink descends originally from North America
- Breeding of mink has taken place in Denmark since the thirties
- Mink is domesticated like cattle and pigs
- Mink occur in many colours



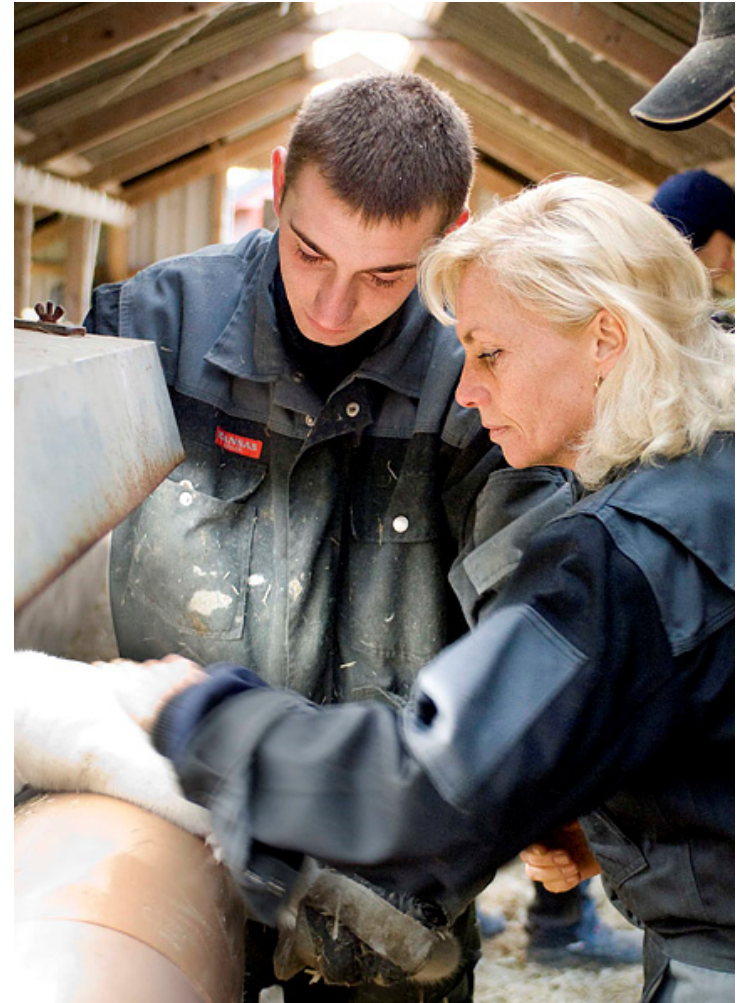
PUPPIES

- Mating starts in March
- The puppies are born between 25 April and 10 May
- When the puppies are 8 weeks old, they are weaned



SELECTION OF BREEDING ANIMALS

- Just before the pelting, next year's breeding animals are selected
- The quality of the possible breeding animals are checked and the best animals are picked out
- Many farmers use computer models to select the right animals with the strongest genes



PELTING

KOPENHAGEN
FUR



DELIVERY TO THE AUCTION HOUSE

KOPENHAGEN
FUR



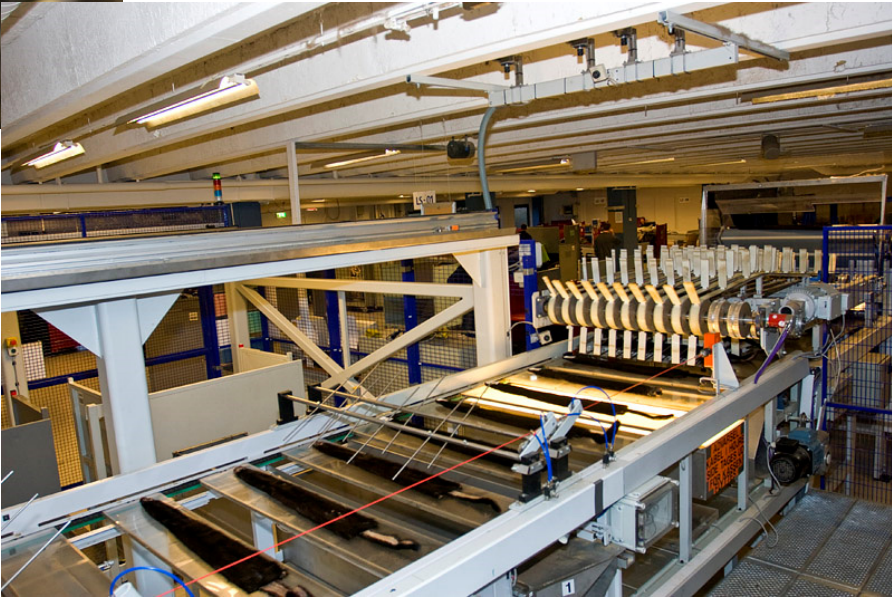
GRADING PROCESS

KOPENHAGEN
FUR

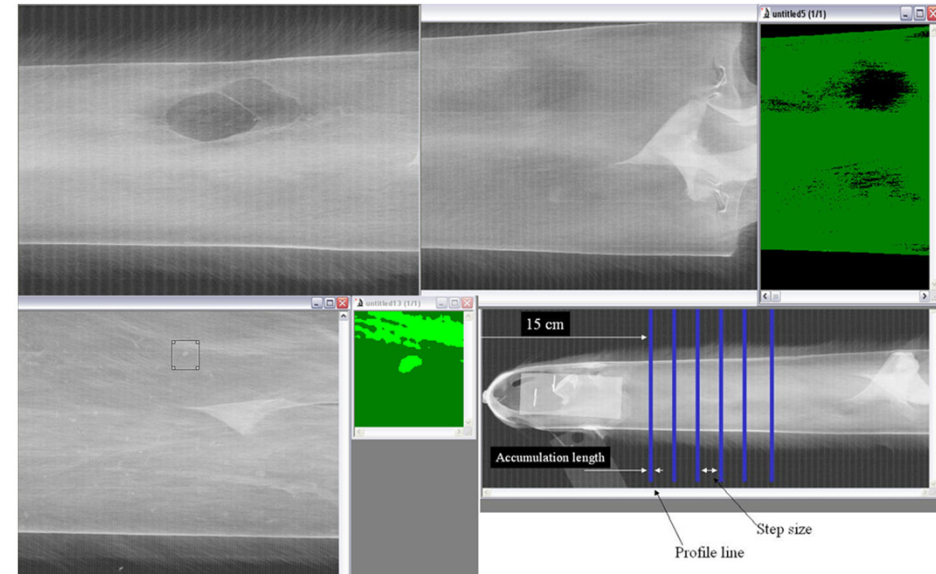


LENGTH MEASURING

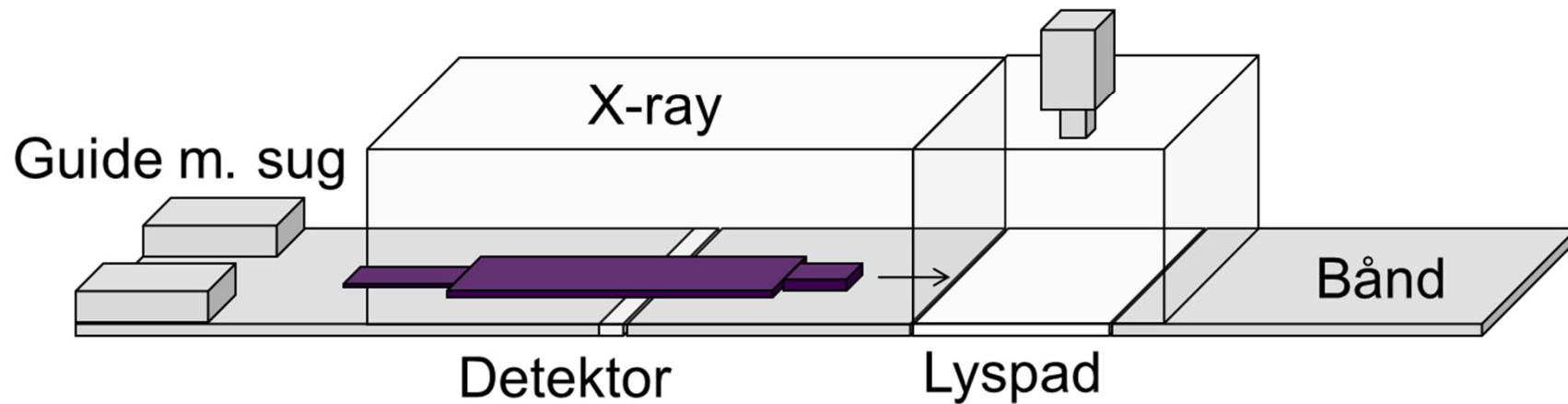
KOPENHAGEN
FUR



X-RAY & PHOTOVISION TECHNOLOGY

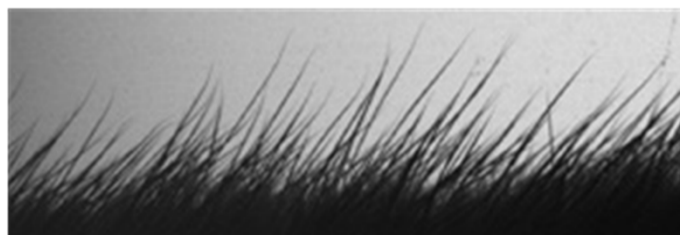


Kamera

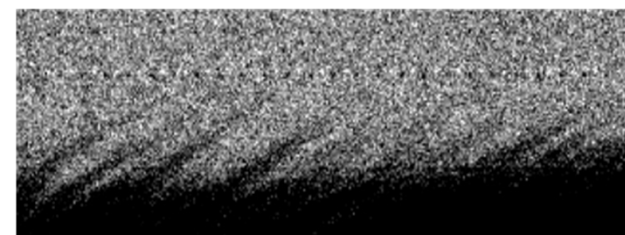


ANALYSIS

Characteristic	Fotovision	X-ray
Hairlength / Nap	X	
Length		X
Quality	X	X
Hairlength evenness	X	
Hair distribuion	X	
Wool density		X
Wool thickness		X



Fotovision



X-ray

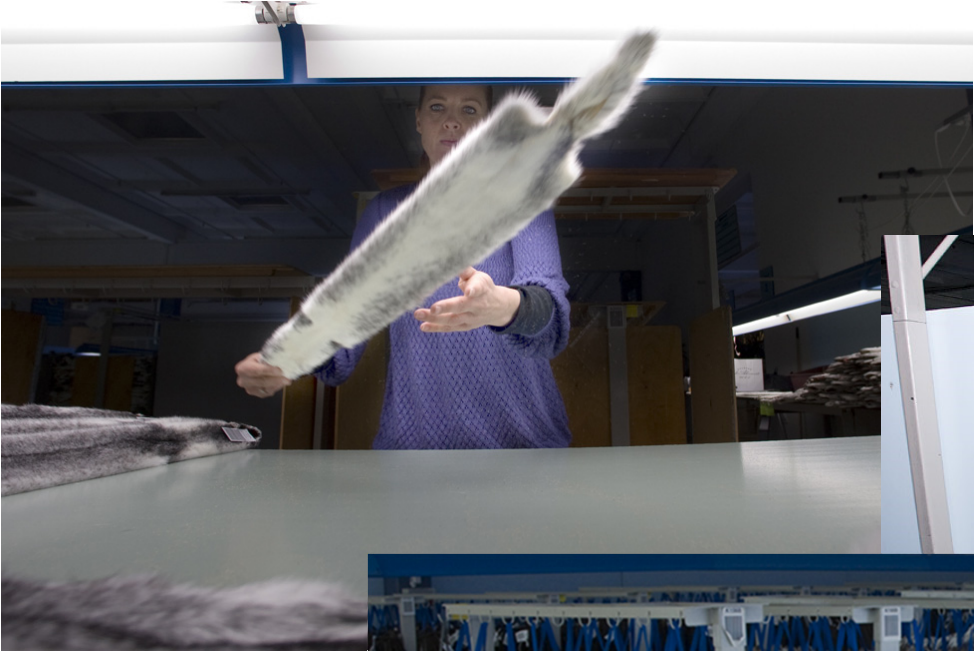
COLOUR MEASURING

KOPENHAGEN
FUR



GRADING IN QUALITIES

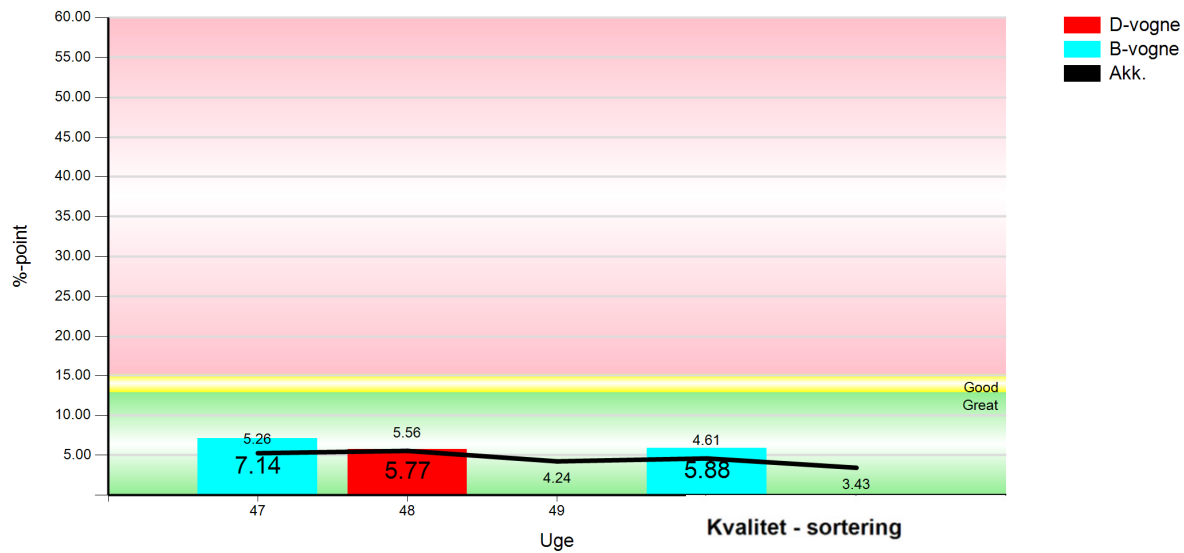
KOPENHAGEN
FUR



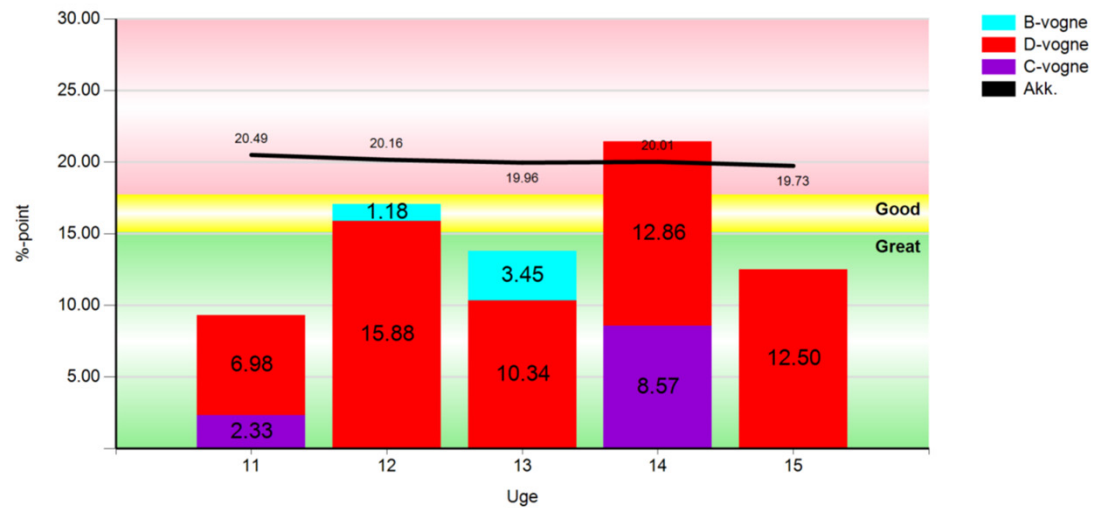
QUALITY MANAGEMENT

KOPENHAGEN
FUR

Kvalitet i opmåling (Alle) %-point alle skifter



Kvalitet - sortering



AUCTION SALE

KOPENHAGEN
FUR

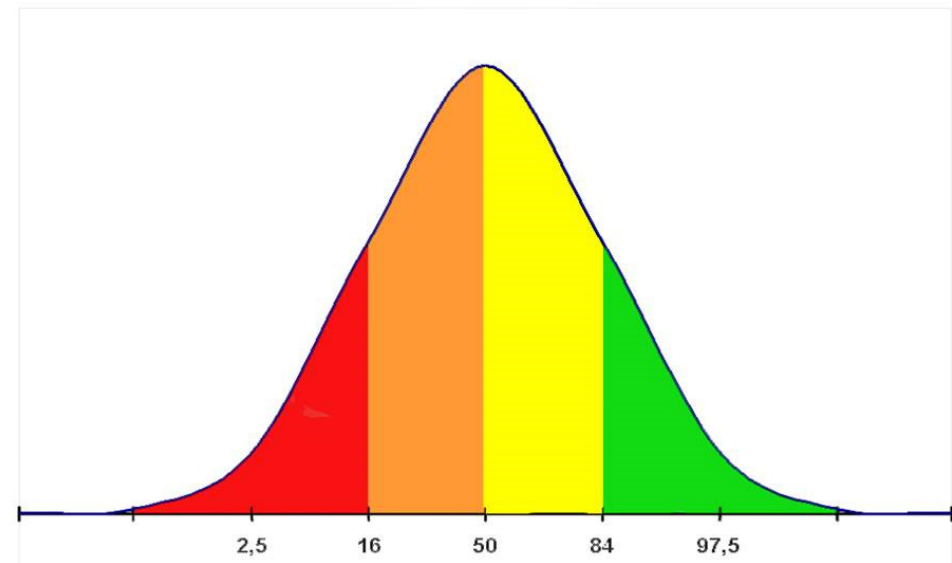


FARMCOCKPIT

Overview Price Index / Figure of value 2014

Kopenhagen Farm (339139)

Type	Season 2014					Figure of value				Avg. Avler				
	Breeding result	Empty percentage	Skins	% Reg	Reg skins	Price index	Sum of value	Number	KH1+KH2		Colour	Quality	Size	Clarity
Black M (111)	5.6	7.5	866	81%	703	92	4333	156 / 560	60	103	97	97	103	341
Black F (211)	5.6	7.5	866	93%	807	96	4406	160 / 613	59	104	95	98	103	215
Mahogany M (119)			58	69%	40	93	2523	754 / 880	75		97	95		298
Mahogany F (219)			14	100%	14	97	2592	608 / 893	64		94	100		228
Glow/Brown M	6.3	7.7	4734	88%	4161	99	2647	273 / 1333	76		100	100		362
Glow/Brown F	6.3	7.7	4670	94%	4386	99	2660	274 / 1322	69		98	100		226
Pastel M (121)			19	95%	18	103	4613	35 / 90	81	104	105	101	101	419
Pastel F (221)			4	100%	4	114	4825	1 / 78	78	107	120	102	104	270



HITLIST

KOPENHAGEN
FUR



Danmark ▼ 2014 ▼ Black M (111) ▼ Status - All ▼

Disease status last updated 25. august 20

Hit list

Filter

Comparison

Remove filter

Deselect all

Columns

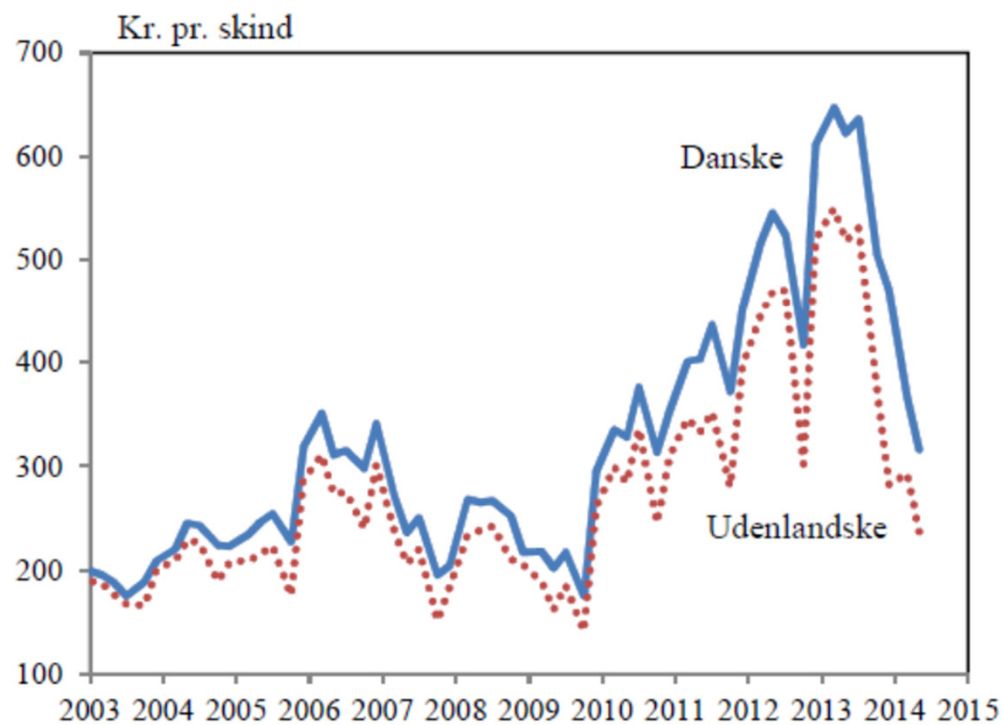
Number of rows: 16

Rank	Name	PI	PSGV	Purple	VS	Colour	Quality	Size	Purity	KH1_Kh2	KH1	KH2	Skin	BP
1	Peter Olsen	122	68	26	4634	100	110	111	101	96%	59%	37%	1125	4,2
2	Egon Christensen	121	78	35	4617	100	112	110	98	92%	51%	42%	259	3,3
3	Hans Østergaard	121	71	40	4595	98	113	109	99	99%	31%	68%	396	5,2
4	Ole Holmgård	120	61	15	4605	101	108	111	101	96%	51%	43%	256	4,2
5	Ulrik Jensen	118	68	31	4580	98	112	108	100	98%	31%	67%	1284	4,9
6	John Christensen	118	72	34	4639	104	111	108	102	91%	60%	32%	394	5,3
7	Lund Mink ApS	118	66	45	4617	99	113	108	101	98%	38%	58%	173	5,1
8	Bodil Amstrup	117	78	41	4636	103	112	107	102	91%	57%	36%	503	5,8
9	Pape Mink I/S	115	41	16	4512	99	106	107	100	99%	25%	74%	311	4,6

RESULTS

KOPENHAGEN
FUR

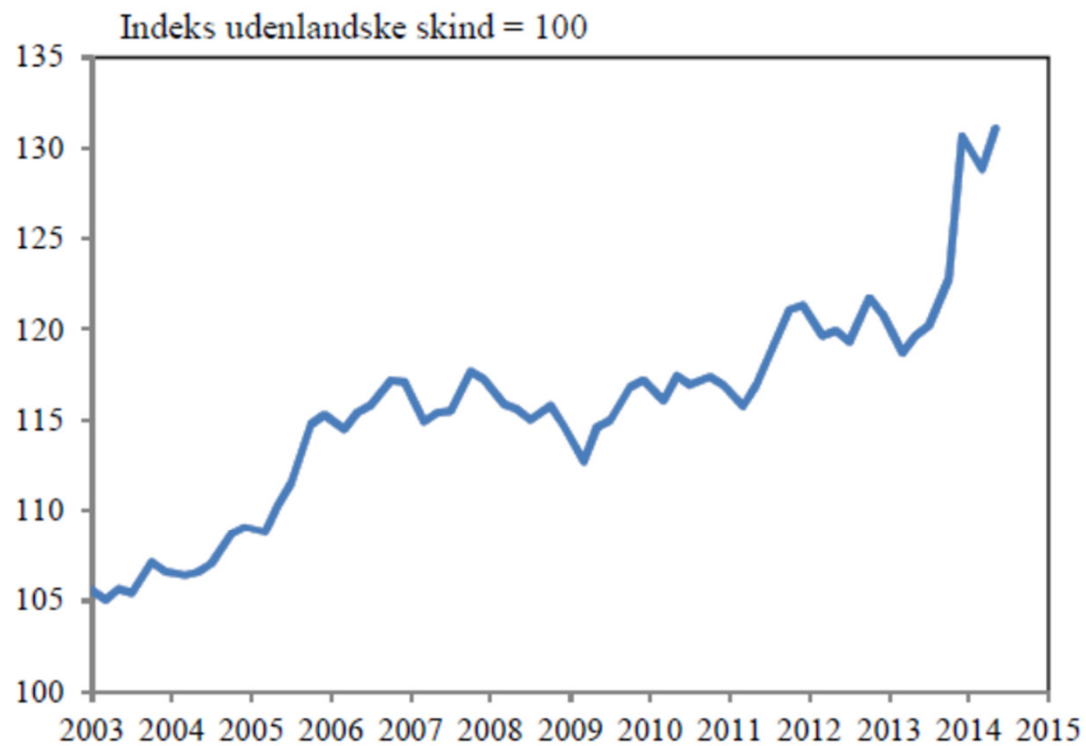
Figur 1. Priser på danske og udenlandske skind ved auktioner hos København Fur dec. 2002 - april 2014 (5 auktioner pr. år)



COMPETITIVE ?

KOPENHAGEN
FUR

Figur 2 Priser på danske og udenlandske skind ved auktioner hos Kopenhagen Fur: Indeks hvor udenlandske skind = 100



Anm: Opgjort pr. auktion men med løbende gennemsnit af seneste 5 auktioner



KOPENHAGEN
FUR



?