

# Influence of management and environmental factors on the movement of sheep on alpine pasture

T. Guggenberger, F. Ringdorfer, A. Blaschka, R. Huber, P. Haslgrübler

Agricultural Research and Education Centre, Austria

# Introduction

---

- Traditionally sheep move free on alpine pastures
- Land use conflicts
- Desire to revive slowly declining pastures
- Practical grazing regimes



# Grazing regime

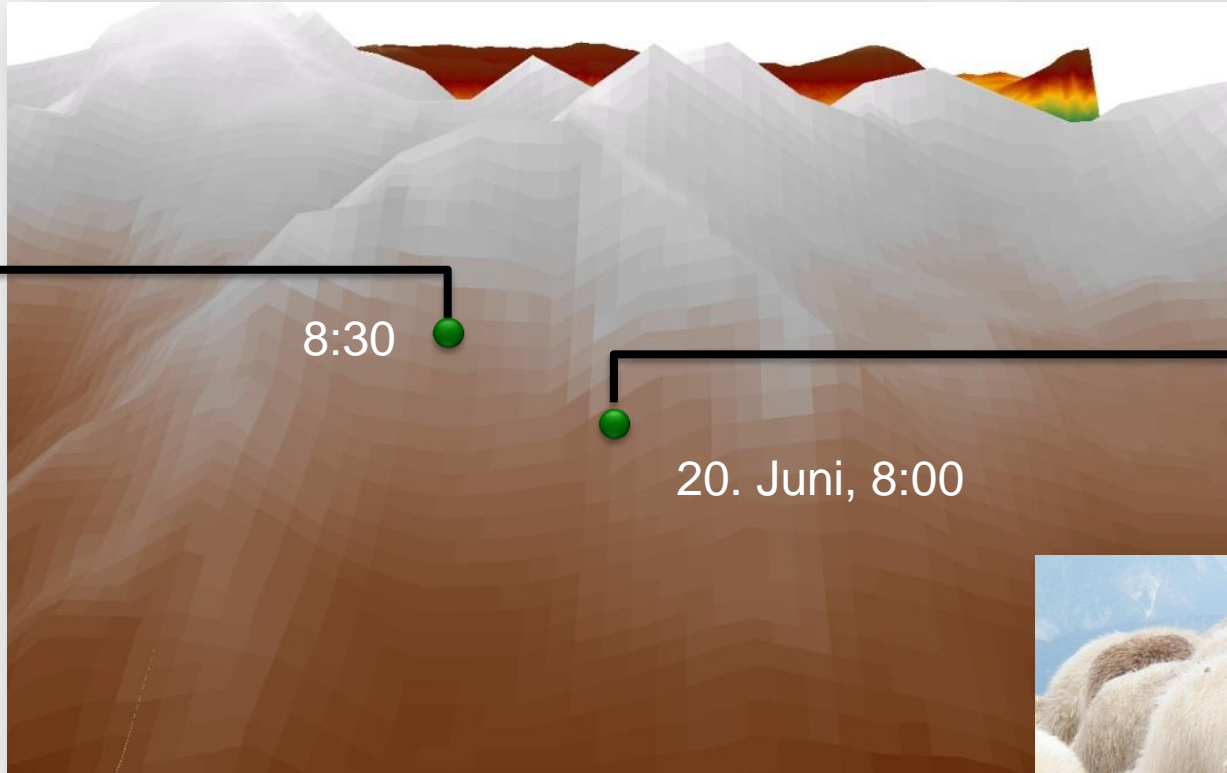
---

- Free grazing regime
- Guided grazing regime
- Guarded grazing regime
- Paddock grazing



# Measurements

- 5 years
- 19 sheep
- 5 areas
- ~ 75.000 measurements



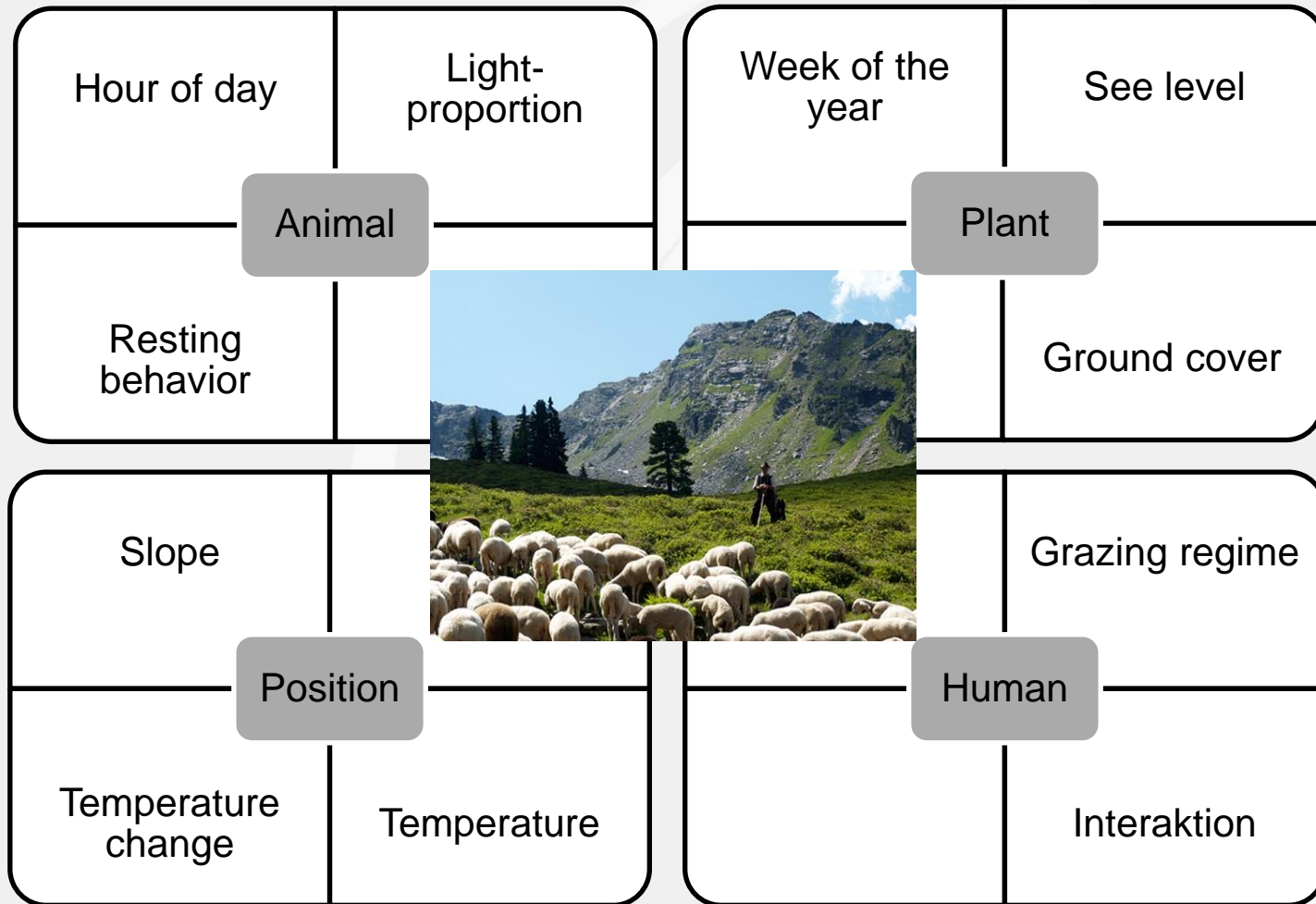
**GPS-collar**  
**GPS-PLUS**  
Vectronic  
Aerospace



- longitude
- latitude
- see level
- temperature

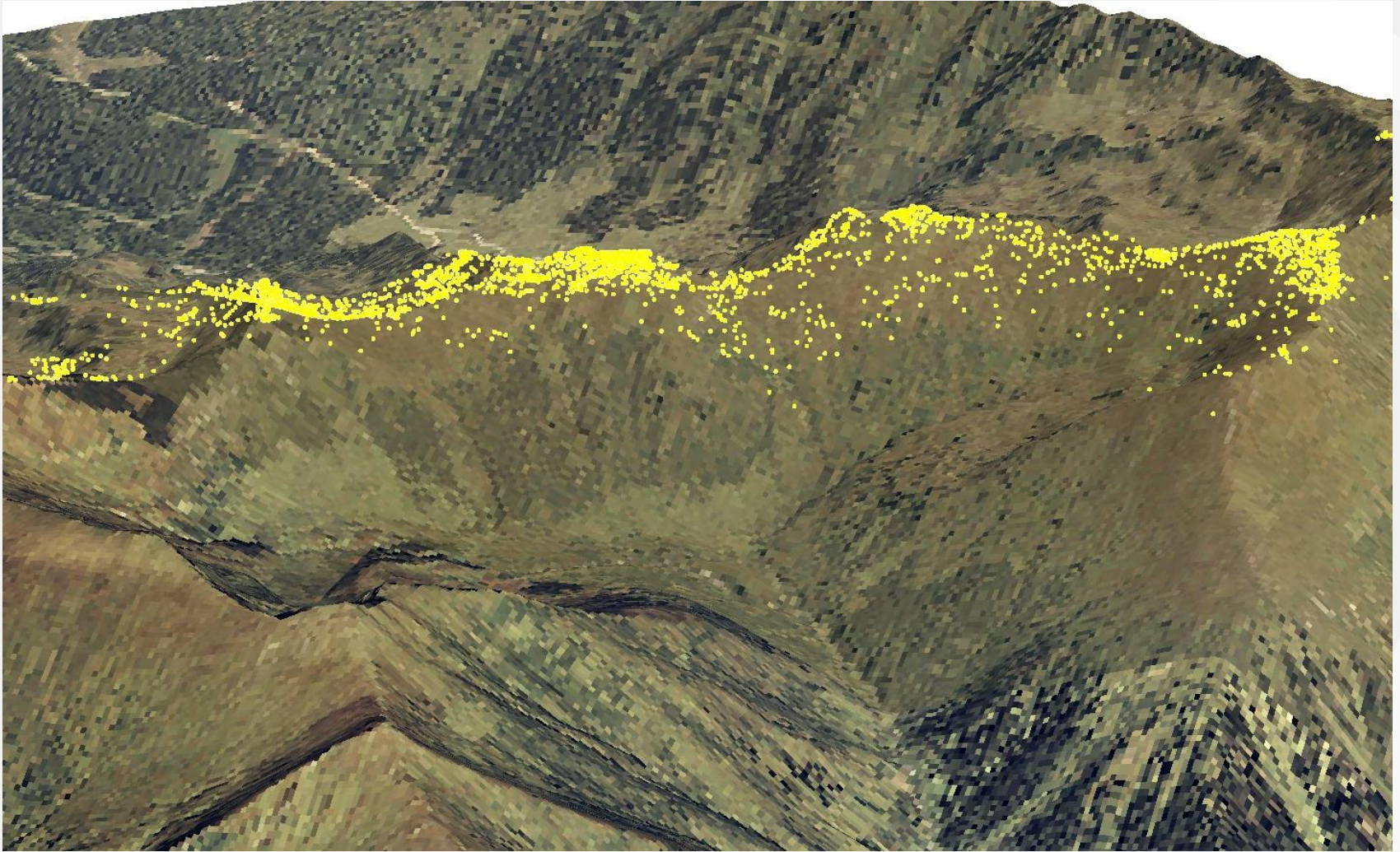
# Factors affecting movement

---

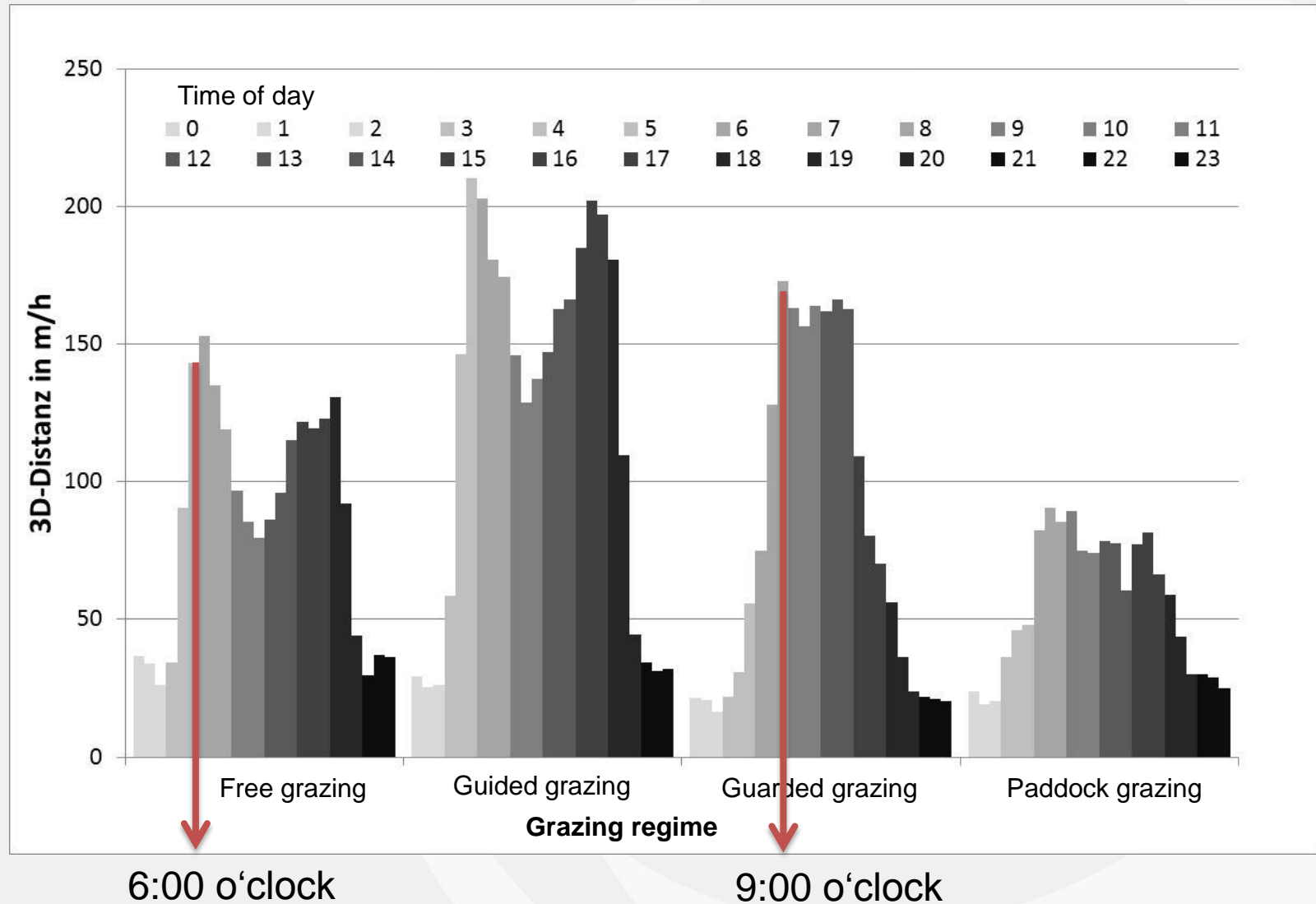


# Segment points

---

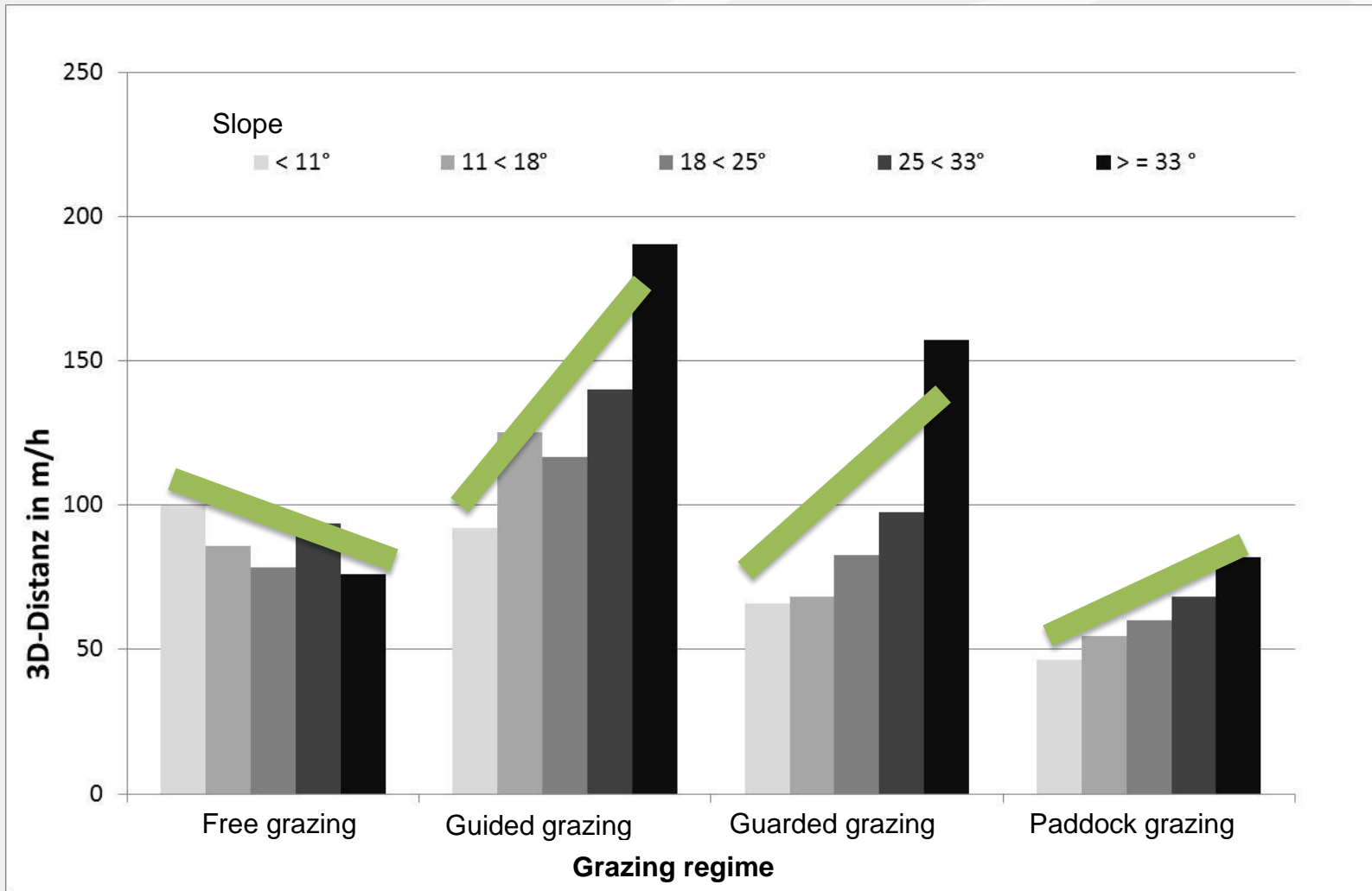


# Movement during a day



# Movement and terrain

 Dynamik





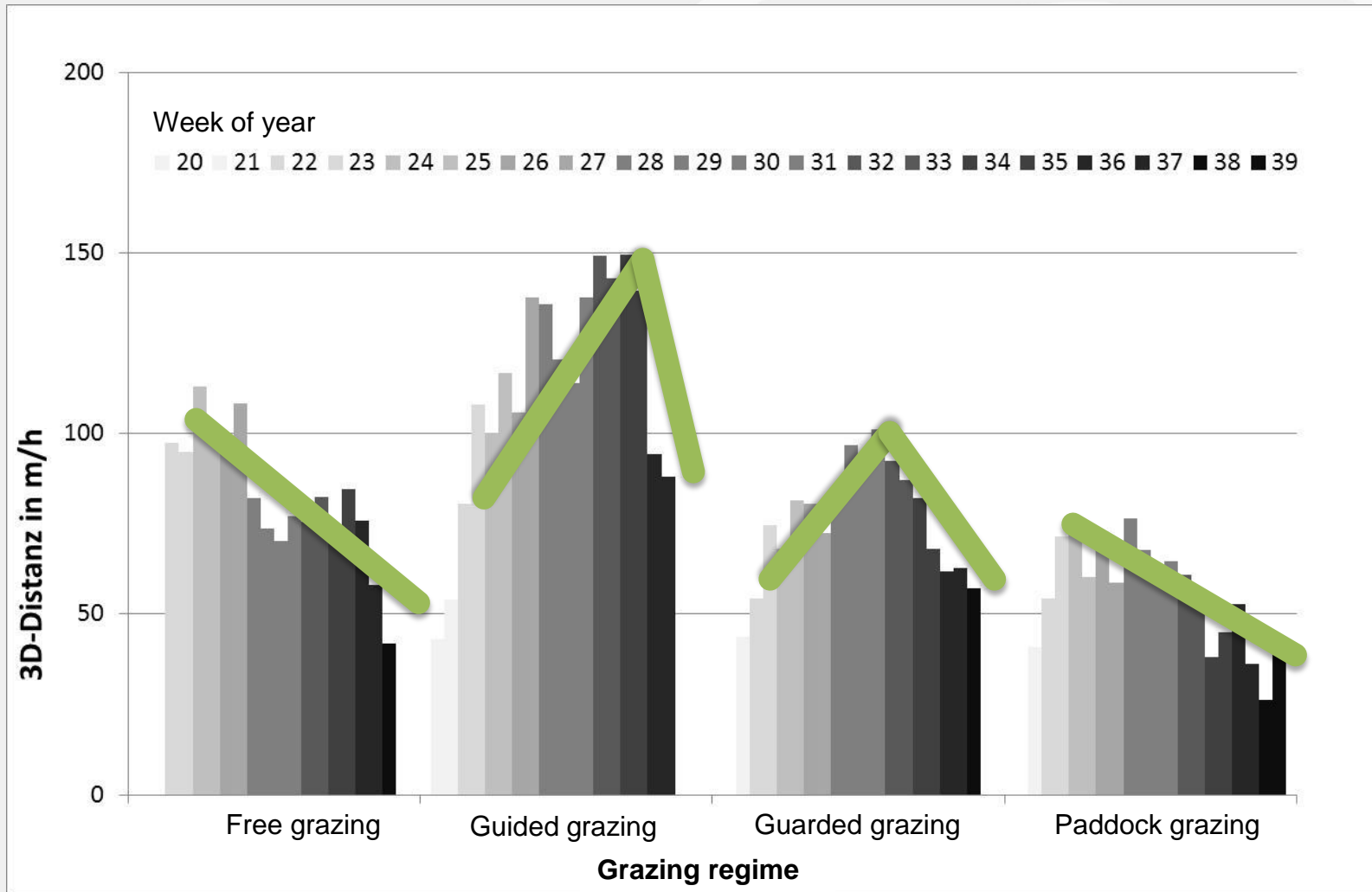
# Resting behavior during the night

---



Sheep use only 4 - 8 different places to sleep

# Movement during week of year



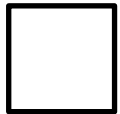
# Recomentation

---



Revival

**Free grazing regime.**



Usage  
conflict

**Control according to § 20 (2) animal protection law**



Revival

**At the beginning of the grazing period have a high stocking rate and fence a large area.**



Usage  
conflict

**Additional feeding is possibel. Thereafter free pasture.**



Revival

**A shepherd guide the flock. Also a large scaled fenced area is helpful.**



Usage  
conflict