

RESPONSE TO SELECTION FOR INTRAMUSCULAR FAT CONTENT AND CORRELATED RESPONSES IN SEVERAL MUSCLES IN RABBITS

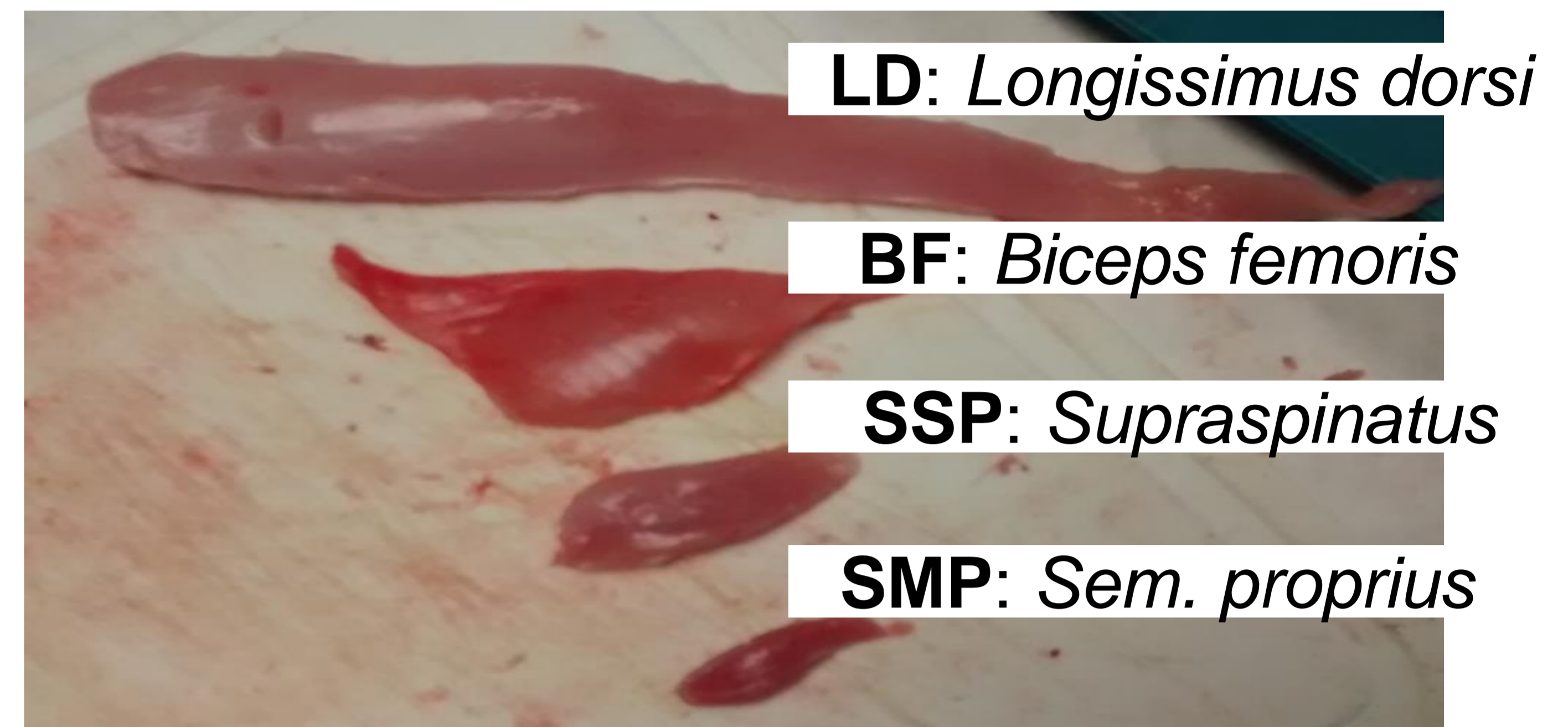
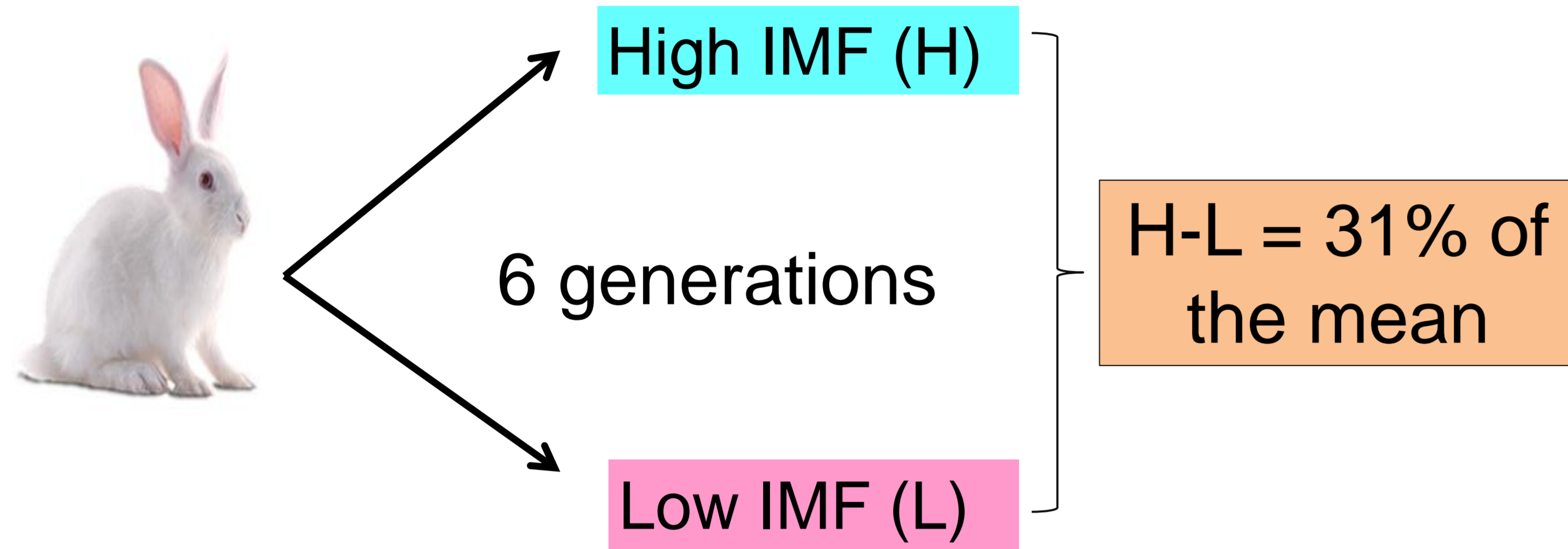
M. Martínez-Álvaro, V. Juste, A. Blasco and P. Hernández

Institute for Animal Science and Technology, Universitat Politècnica de València, Valencia, Spain

Corresponding author: mamaral9@upv.es

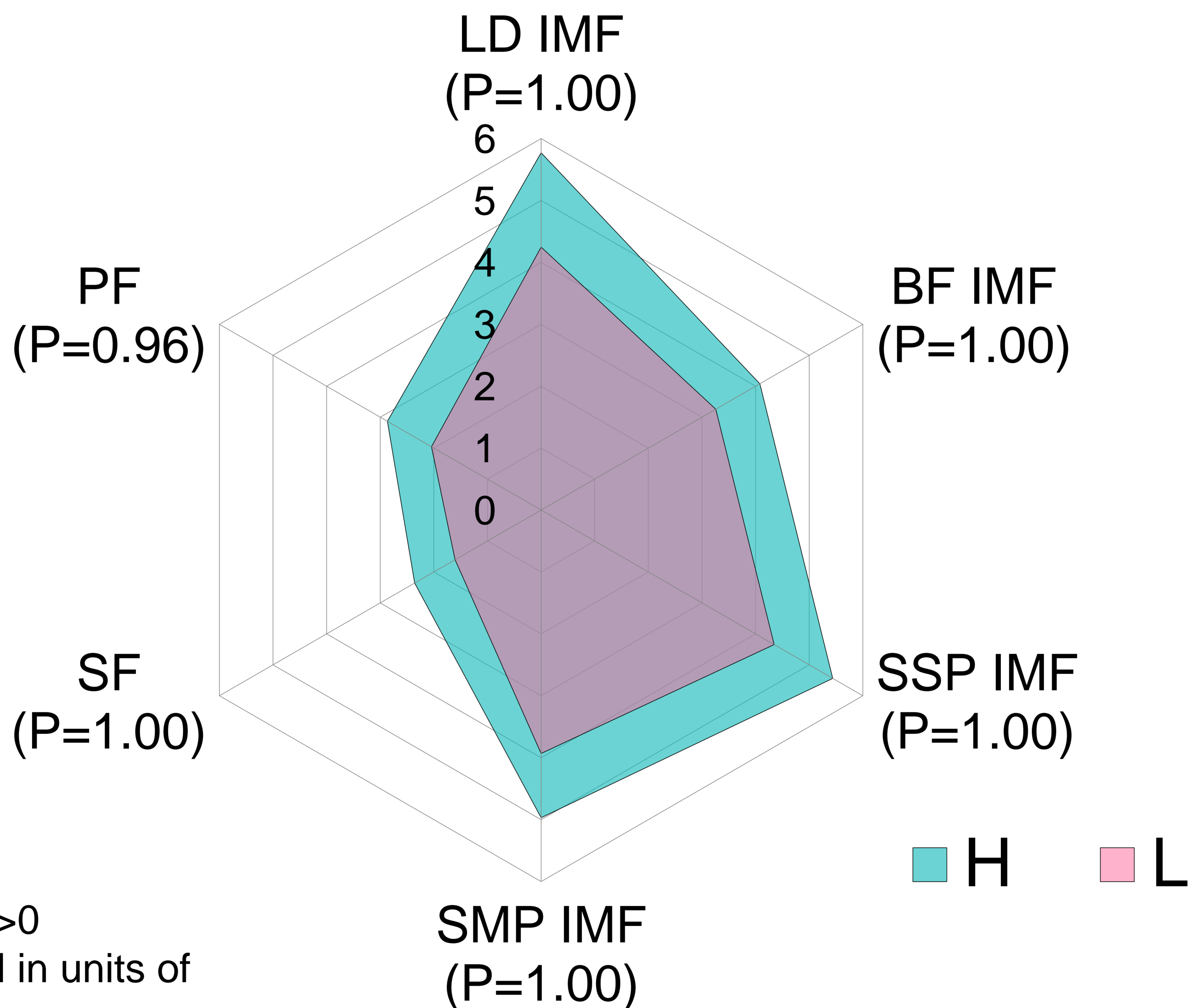
Objective: Correlated response for intramuscular fat content (IMF) in several muscles after selection for IMF in *Longissimus dorsi* in rabbits.

Selection for IMF in LD at 9 wk



Scapular fat weight (SF)
Perirenal fat weight (PF)

IMF and fat depots of H and L at 9 wk



P: probability of $H-L > 0$
Traits are expressed in units of standard deviation.

Response to selection 0.25 SD per generation

Correlated response in IMF in other muscles

Correlated response in fat depots