

# Multi-litter vs. single-litter housing: post-weaning piglet performance

**Sofie van Nieuwamerongen**

**EAAP Warsaw 3-9-15**

PhD at the Adaptation Physiology Group, dept. of Animal Sciences.

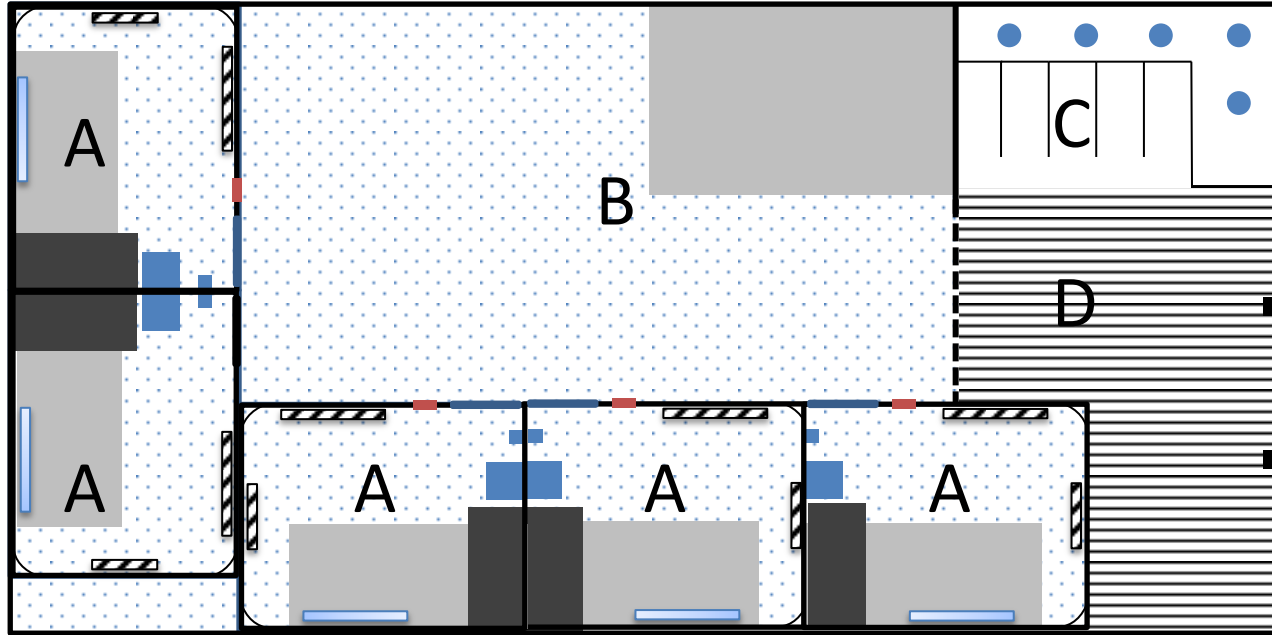


# Background

- Group housing during gestation mandatory in EU
  - Welfare concerns for crated lactating sows
- Renewed interest in group housing for lactating sows?



# Multi-suckling (MS) system



A=farrowing pen

B=communal lying area

C=communal feeding area

D=communal dunging area

# Aim of experiment

- MS system not only benefits sows; also piglets
    - Diverse social group
    - Learning to eat
    - More complex environment
  - Also risk factors
    - Cross-suckling
    - Crushing after grouping
- Effects on piglet development?



# Experimental setup

Single-litter (SL)

Multi-litter (ML)

Pre-weaning  
Day 0-27



Post-weaning  
Day 28-63



# Feed intake

FI/piglet, kg	ML	SL
Day 0-1	0.15±0.03	0.14±0.01
Day 1-2	<b>0.29±0.02</b>	<b>0.16±0.03**</b>
Day 2-5	0.8±0.1	0.7±0.1
Day 5-13	3.5±0.3	2.5±0.3
Day 13-35	19.8±1.3	16.7±0.2
<i>Day 0-35</i>	<i>24.5±1.6</i>	<i>20.2±0.4</i>



\*\*p<0.01

# Weight gain

Gain/piglet, kg	ML	SL
Day -1-2	0.59 ± 0.06	0.35 ± 0.03**
Day 2-5	0.76 ± 0.17	0.39 ± 0.14*
Day 5-13	2.5 ± 0.2	1.8 ± 0.1
Day 13-35	13.2 ± 0.9	11.1 ± 0.3*
Day -1-35	17.0 ± 1.2	13.7 ± 0.4*

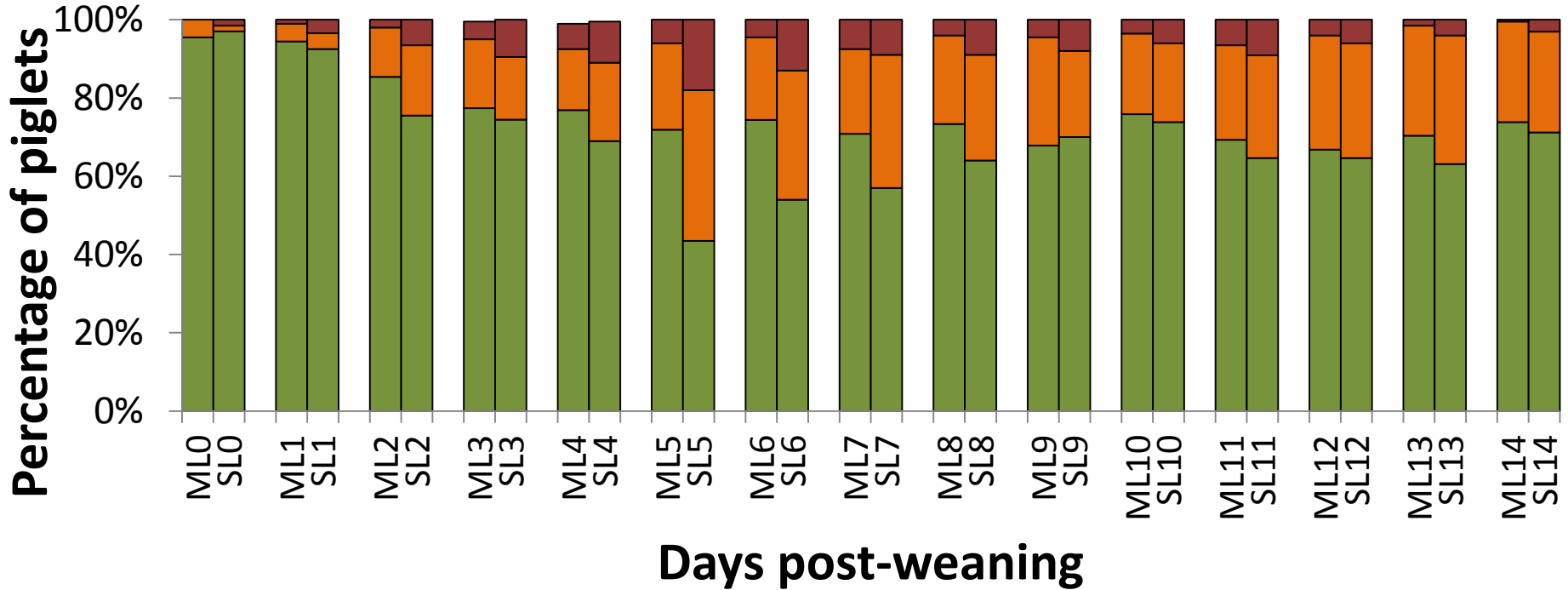


\*p<0.05

\*\*p<0.01

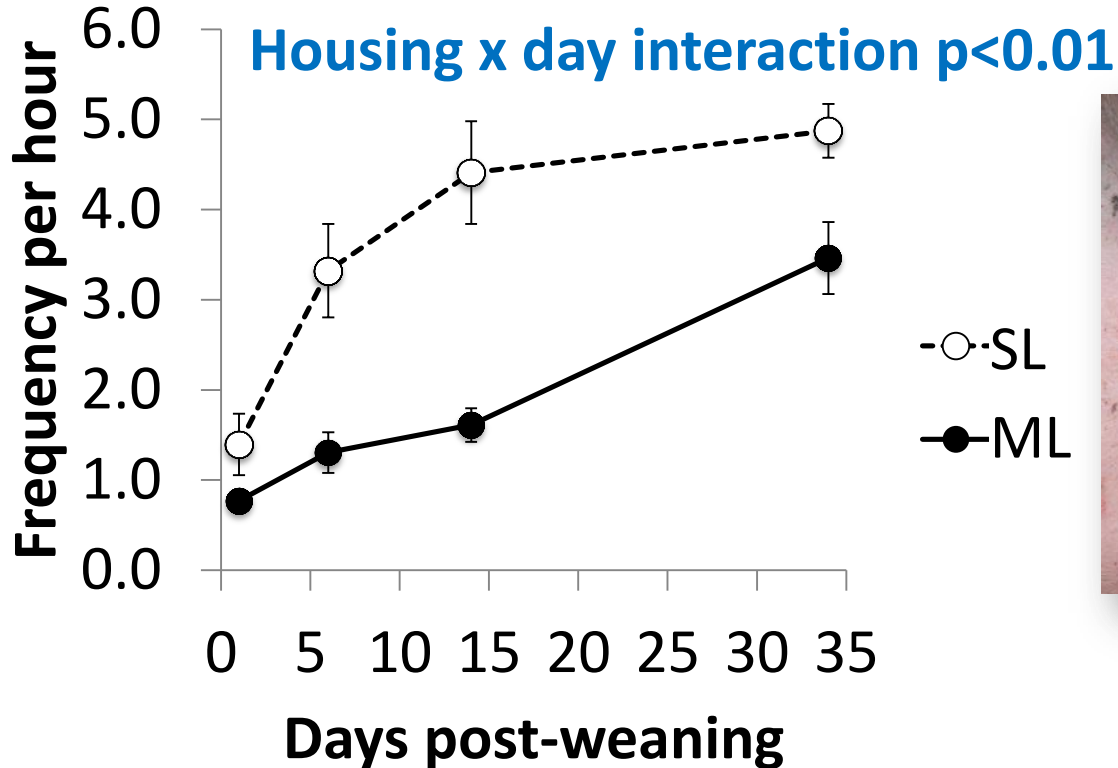
# Faecal consistency scores

■ %normal    ■ %pasty    ■ %watery

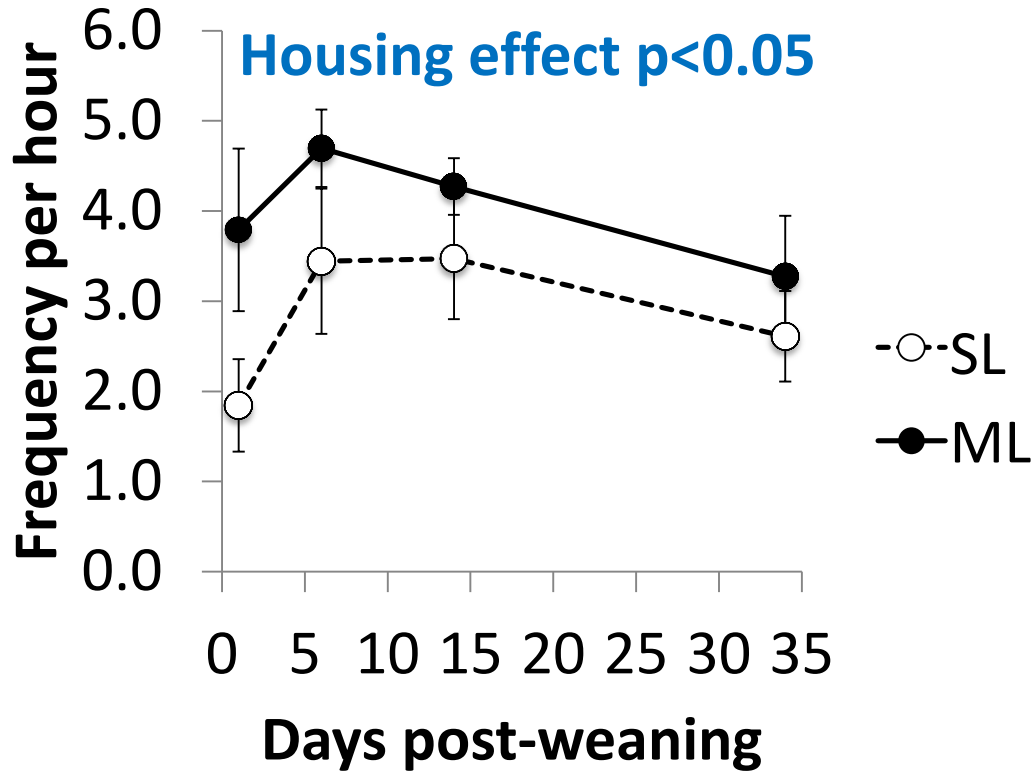




# Damaging manipulative behaviour



# Play behaviour



# Discussion (1)

## ML better (early) post-weaning performance

↑ feed intake (81%)

↓ diarrhea

↑ weight gain (24%)



## Why?

- Pre-weaning: learn to eat from sows+piglets, start eating earlier, chewing materials
- Post-weaning: social facilitation, more experienced eaters

# Discussion (2)

## ML behaviour reflects better welfare

↓ tail/ear biting

↑ play behaviour



## Why?

- Better transition to post-weaning phase
- More enriched social and physical environment

# Challenges

- Pre-weaning:
  - Crushing (farrowing pen design, climate)
  - Lameness (abrasive flooring)
- Post-weaning: Frustration? (crowding)





## To sum up



### **ML system promising for raising robust piglets**

- Improved
- Transition around weaning
  - Post-weaning performance
  - Behavioural development

# *Thank you for your attention*

A cooperation of Wageningen University, Livestock Research and Swine Innovation Centre Sterksel.

Funded by the Dutch Ministry of Economic Affairs

Project team:

Carola van der Peet-Schwering, Anita Hoofs, Nicoline Soede, Liesbeth Bolhuis, Bas Kemp, Geert van der Peet.



For more information: [Sofie.vannieuwamerongen@wur.nl](mailto:Sofie.vannieuwamerongen@wur.nl)