

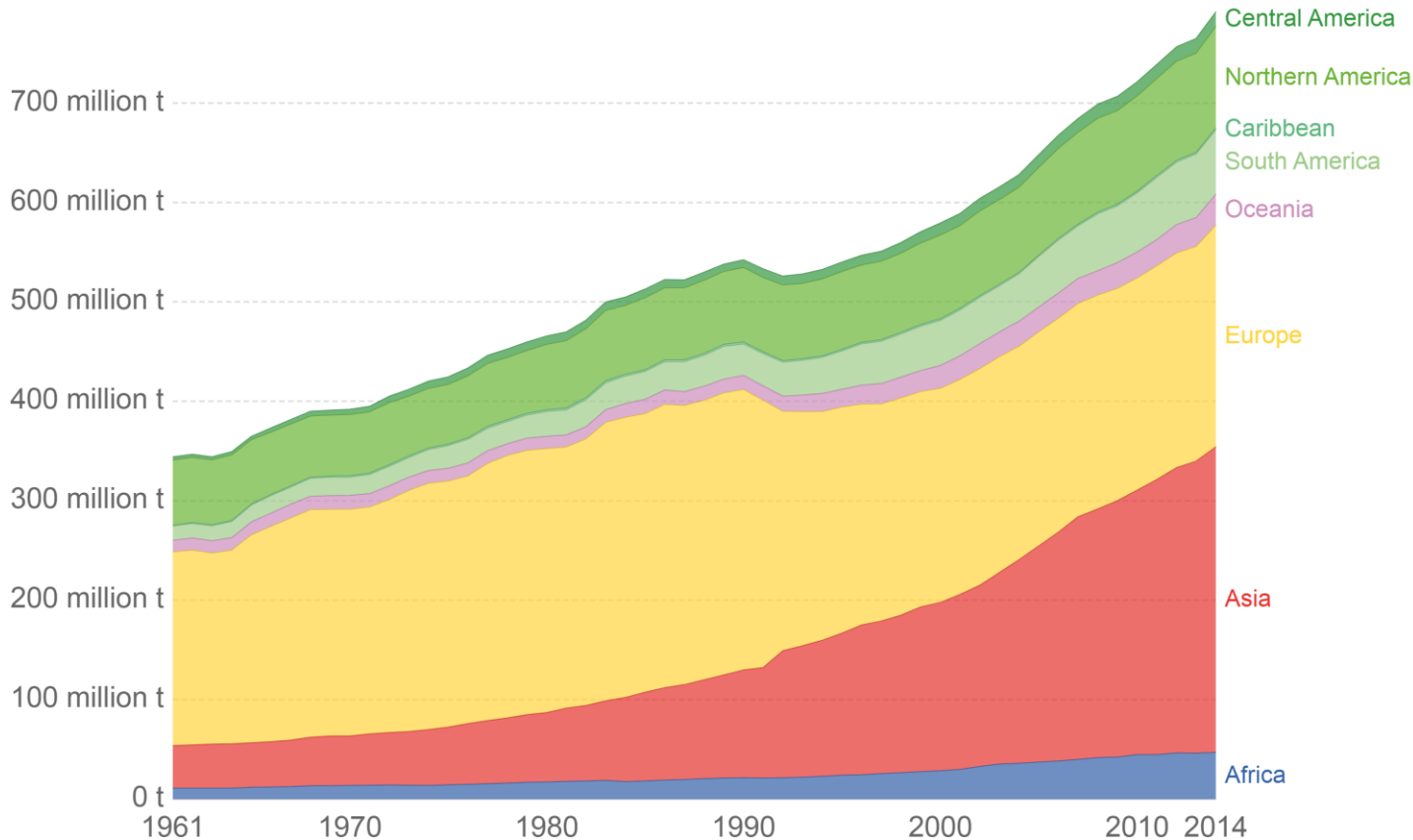


SUSTAINABLE INTENSIFICATION USING GENETICS FROM HIGH INPUT CATTLE BREEDING PROGRAMMES

Sijne van der Beek | 29 August 2018

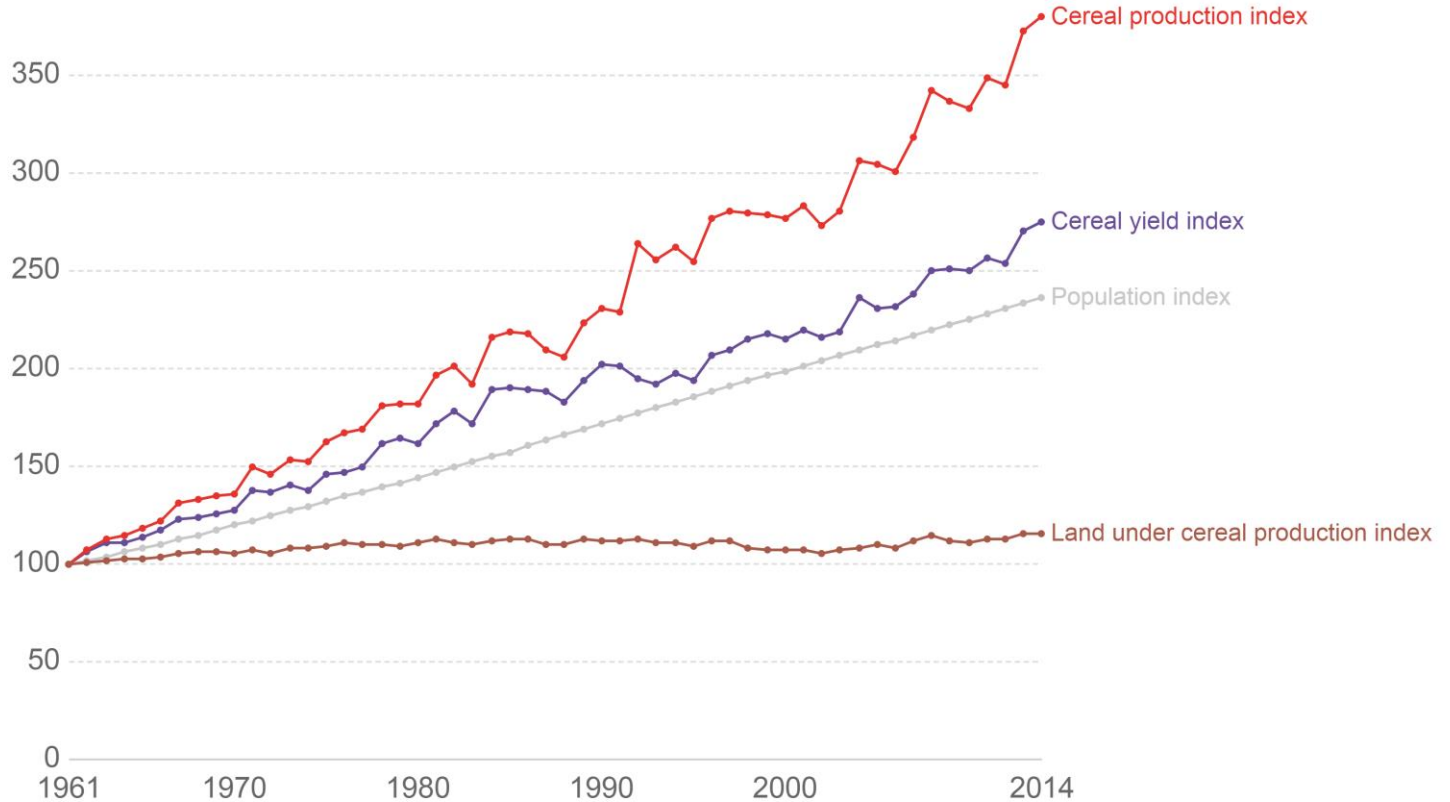
Milk production, tonnes

Total milk production, measured in tonnes per year. Data on milk production relate to total production of whole fresh milk, excluding the milk sucked by young animals but including amounts fed to livestock.



Index of cereal production, yield and land use, 1961-2014, World

The index of total cereal production (measured in metric tonnes), cereal yield (kilograms per hectare), and land used for cereal production (hectares). The index is calculated as the production, yield and land use in any given year divided by that in the year 1961 (i.e. 1961 = 100). The index of total population (all ages and genders) relative to 1961 is also shown. Trends for individual countries can be viewed using the "change country" wheel.

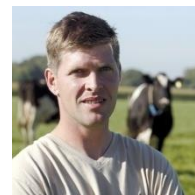








AD



ER

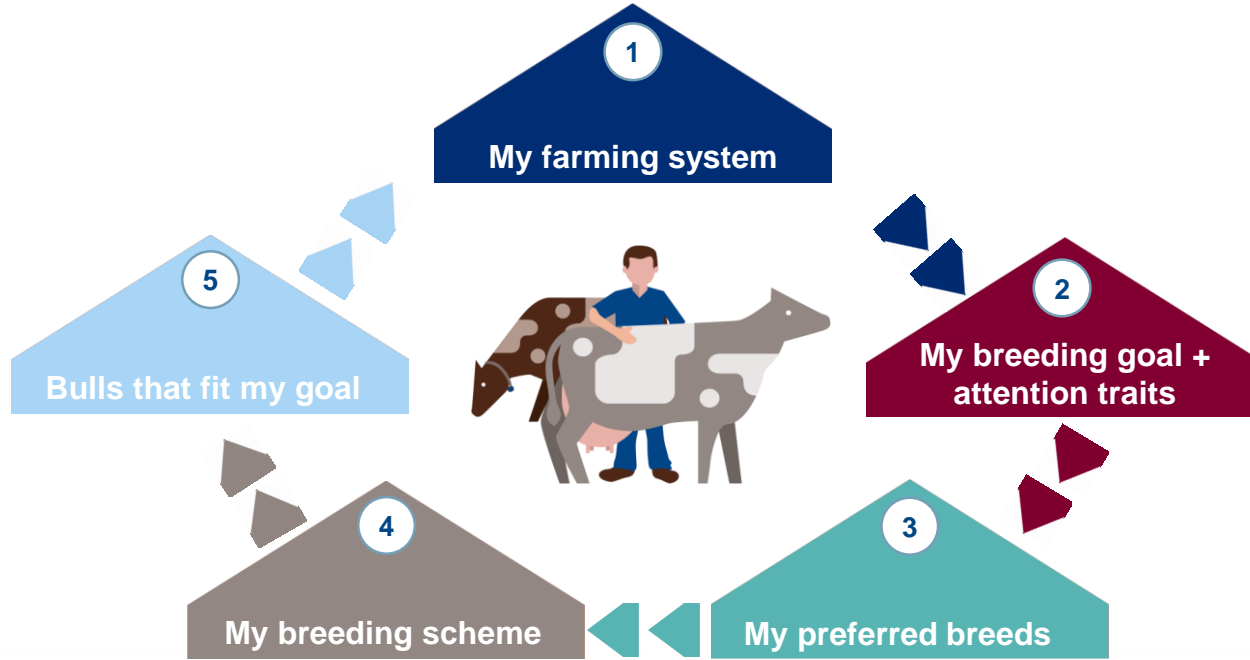
FE







SUSTAINABLE INTENSIFICATION REQUIRES A PLAN



Step 1. Farming systems navigator

Your CRV consultant will assist you in following the navigator to define your farming system.

ARE YOUR DAIRY COWS **GRAZING** DURING THEIR LACTATION?

DAIRY FARMING SYSTEMS

YES

NO

WHAT IS YOUR **MAIN FOCUS?**

MAXIMUM PRODUCTION PER COW

MAXIMUM PRODUCTION PER KG OF GRASS

ARE YOUR COWS FED WITH **MORE THAN 20% SUPPLEMENTS** IN THEIR RATION?

NO

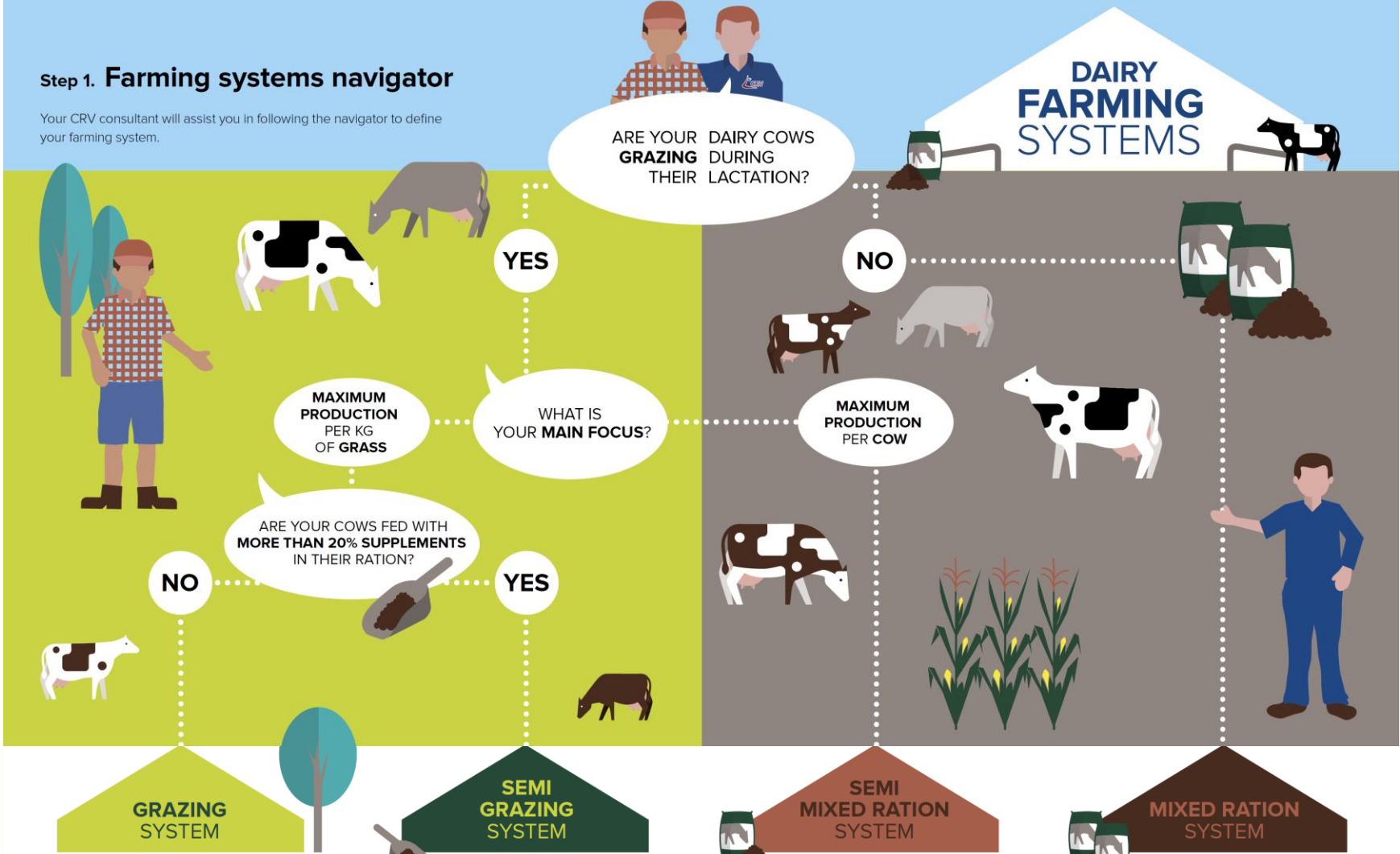
YES

GRAZING SYSTEM

SEMI GRAZING SYSTEM

SEMI MIXED RATION SYSTEM

MIXED RATION SYSTEM



DISSEMINATION IS CRUCIAL: KNOWLEDGE

Artificial Insemination Course (IA)

About the course

The course empowers those interested in an objective, theoretical and practical training of 36 hours. With AI, you promote genetic and productive breeding, corrective mating, herd standardization, choice of animal sex, and more. It is the CRV Lagoon offering the true democratization of genetics!

Target audience: Students, technicians or other professionals related to the agricultural sector.

[Learn more about the course and sign up](#)

Course of Animal Genetic Improvement - Cutting herds

About the course

The course of animal genetic improvement (cutting herds) will bring the necessary tools for the development of Brazilian beef cattle. Basic concepts will be addressed and applied in animal genetic improvement. Productive aspects of the Nelore matrix. Best practices in the productive and reproductive management of herds in selection. Selection of progeny tests and bulls for mating season. Selection indices; interpretation of genetic evaluation reports. Concepts about crossing and practical exercise of CPMU evaluation.

Target audience: Producers, professionals of the area and students of the area of Agrarian Sciences.

Courses

- Advanced Course of Artificial Insemination at Fixed Time (IATF)
- Andrology Course in Cattle
- Casking Course
- Artificial Insemination Course (IA)
- Course of Animal Genetic Improvement - Cutting herds
- Animal Genetic Improvement Course - Dairy Herds
- Performance Course in Capatazia
- Performance Course in Creative Management
- Total Performance Course

Recent News



MANAGEMENT TIPS: EVALUATING LOCOMOTION SCORE

08/23/2018

DISSEMINATION IS CRUCIAL: SEMEN



