



*EAAP, Dubrovnik,
2018*



**Genome-wide association
studies of morphometry,
gaits, cardiac function and
behavior in endurance
horses**

Marjorie CHASSIER

*Robert C., Blouin C., Morgenthaler C., Rivière J.,
Mach N., Vidament M., Mata X., Schibler L., Ricard
A., Barrey E.*



GenPhySE, INRA Toulouse, France

Background

- Arabian and crossed Arabian horses are well adapted to run long distances up to 160 km endurance race in bouts of 30-40 km
- This level of performance is based on:
 - intense aerobic metabolism
 - adaptation of the cardiorespiratory system
 - effective body heat dissipation
 - maintenance of homeostasis

Hard to evaluate



GenEndurance project:

Determine phenotypic criteria that are:

- 1/ easily measurable
- 2/ associated with endurance performance
- 3/ sufficiently inheritable



Background

Phenotypic criteria evaluated on GenEndurance:

Body measurements, morphometry, gaits, cardiac dimension, behavior traits

Phenotypic criteria	Correlation with endurance performance	h^2
Body measurements	$0.1 < r$	High
Morphometry	$0.11 < r < 0.17$	Low to medium
Gaits	$0.08 < r < 0.15$	Low to medium
Cardiac dimension	$0.18 < r < 0.20$	Medium

Robert et al., 2017

→ Endurance performance was suspected to be **multifactorial**



Objective

Perform GWAS to identify genetic determinants (SNPs) associated with :

- body measurements
- 2D-morphometry
- gaits (walk and trot)
- cardiac function
- behavior traits

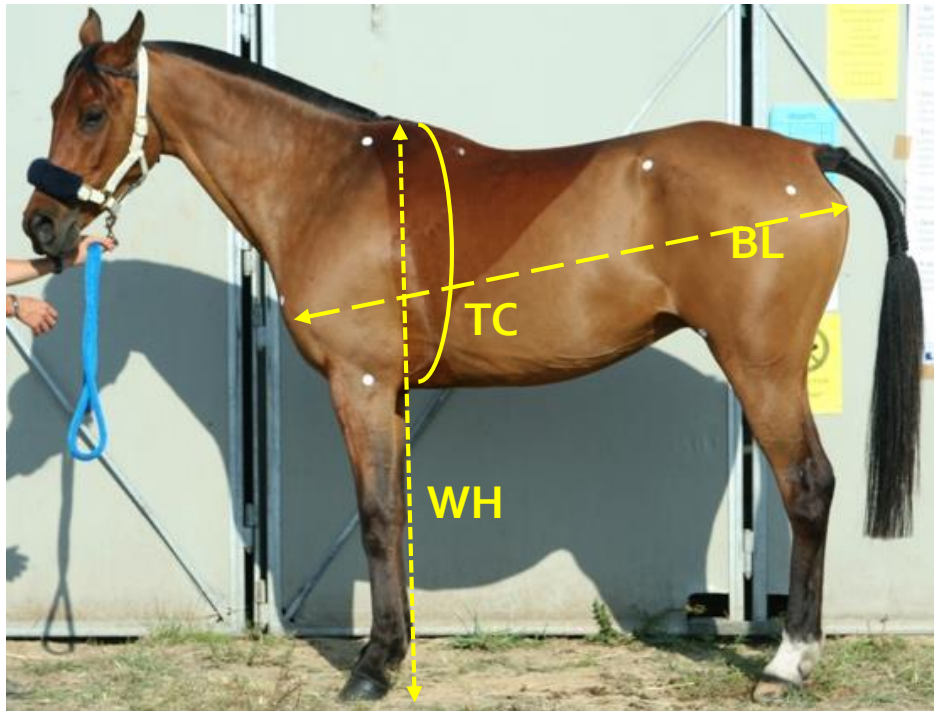


Animals and phenotypes

63 phenotypic traits measured on 1,013 **Arabian horses**

- **Body measurements (n=1,012 horses):**

Withers height (WH), thoracic circumference (TC), body length (BL), weight, **skin thickness**



Animals and phenotypes

63 phenotypic traits measured on 1,013 **Arabian horses**

- 2D-Morphometry (n=716):

Angular measurements, bones length, body surface (calculated), ...



Animals and phenotypes

63 phenotypic traits measured on 1,013 **Arabian horses**

- Walk (n=673) and trot (n=668) characteristics:

Stride frequency, regularity, symmetry, dorso-ventral, lateral and longitudinal activities, propulsion power, ...



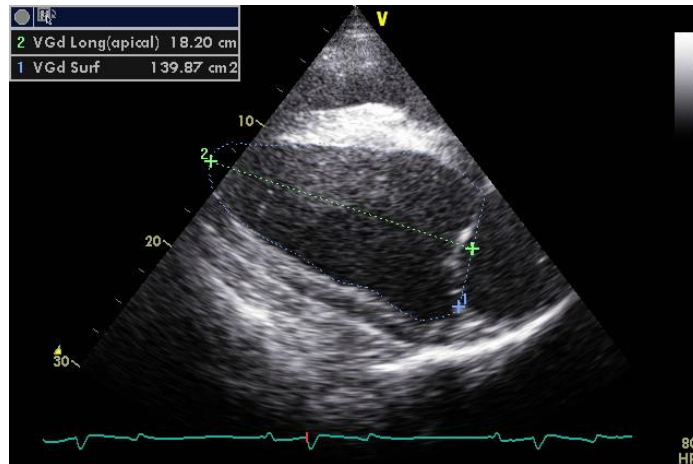
Gait analysis on the track with
an accelerometric device:
Equimetrix™

Animals and phenotypes

63 phenotypic traits measured on 1,013 **Arabian horses**

- Cardiac dimensions (n=326)

Pulmonary artery and aortic diameters, area of left ventricle, stroke volume, ...



Transthoracic, two-dimensional echocardiography



Animals and phenotypes

63 phenotypic traits measured on 1,013 **Arabian horses**

- Quantitative behavior traits (n=370)
 - Behavior score when measuring :
 - skin thickness
 - withers height
 - weight
 - taking blood sample
 - Number of trials to step on the weighting platform



Animals and phenotypes

1,013 Arabian horses:

Age	4-12 years
Sex	9% male, 44% gelding, 47% female
Places	17 Endurance competition or Field exercise test
Years	2011-2014

1,309 horses genotyped (1,013 phenotyped horses + ancestors):



86% MD chip (Illumina) & 14% HD chip (Affymetrix)



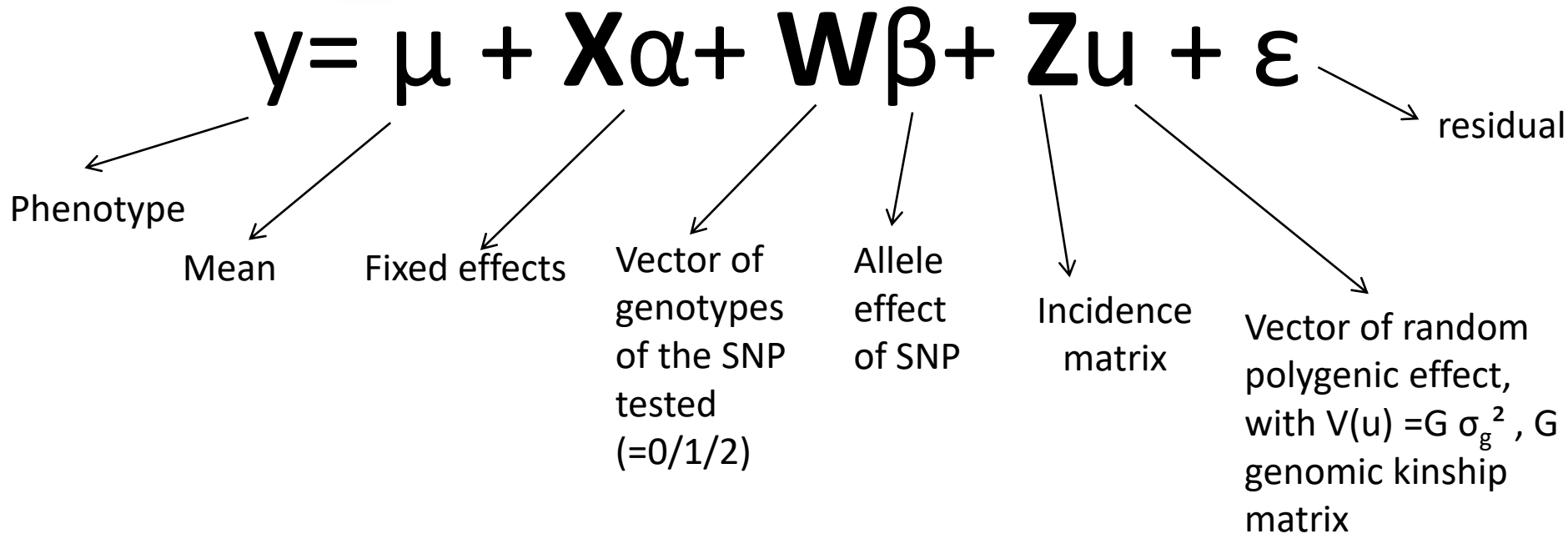
Imputation (Fimpute 2.2 software)
allowed to merge all the genotyping data

100% HD chip



Genome-wide association studies

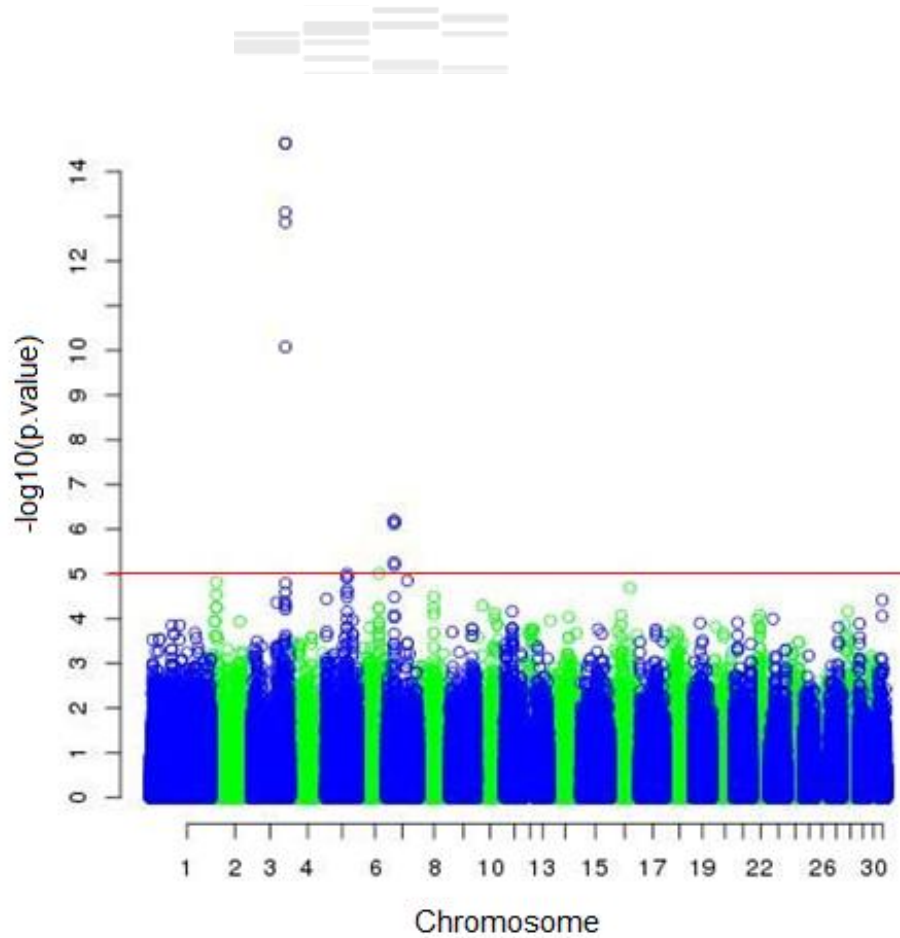
Linear mixed model with a single allele SNP effect:



Using GenABEL package in R (Aulchenko *et al.* 2007)

Threshold p-value: 10^{-5}

Results: Withers Height



OPEN ACCESS Freely available online

PLoS one

A Genome-Wide Association Study Reveals Loci Influencing Height and Other Conformation Traits in Horses

Heidi Signer-Hasler¹, Christine Flury¹, Bianca Haase^{2,3}, Dominik Burger⁴, Henner Simianer⁵, Tosso Leeb², Stefan Rieder^{4*}

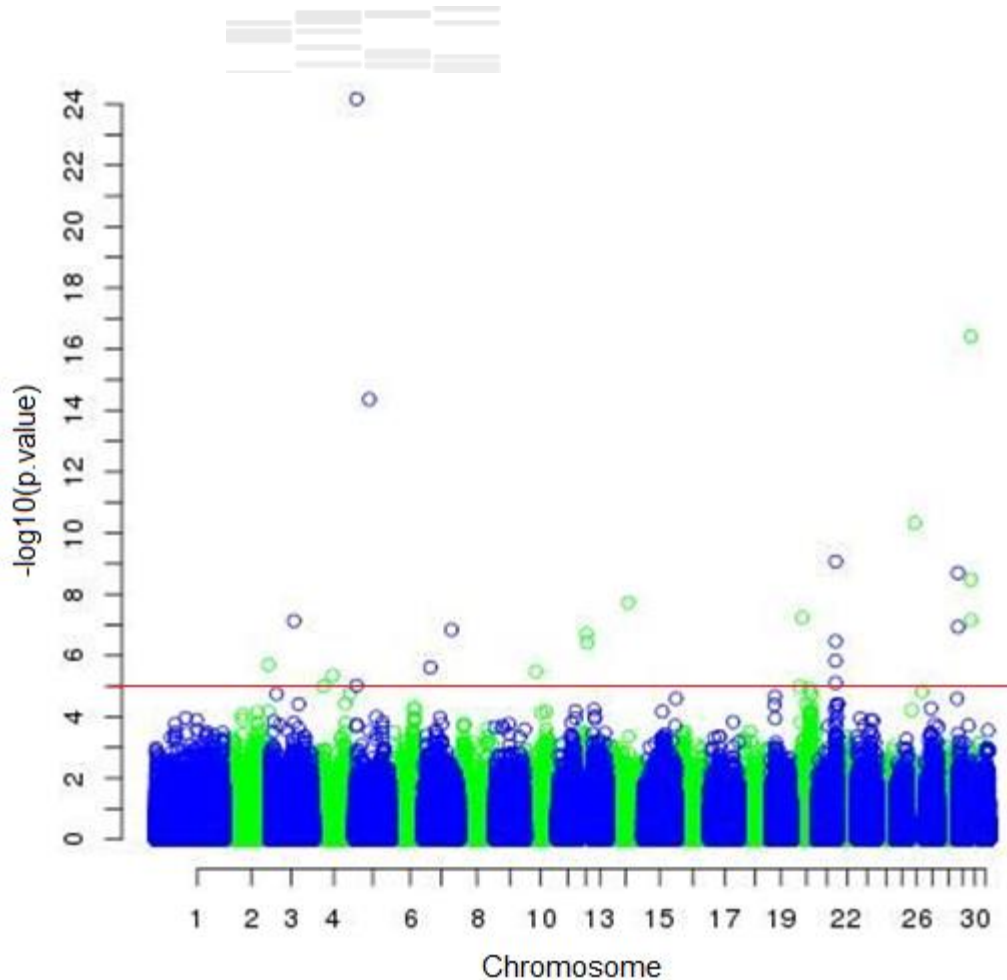


2 SNPs on ECA3:

- BIEC2-808543, 3: 105547002,
- BIEC2-808466, 3: 105163077

9 SNPs on ECA9

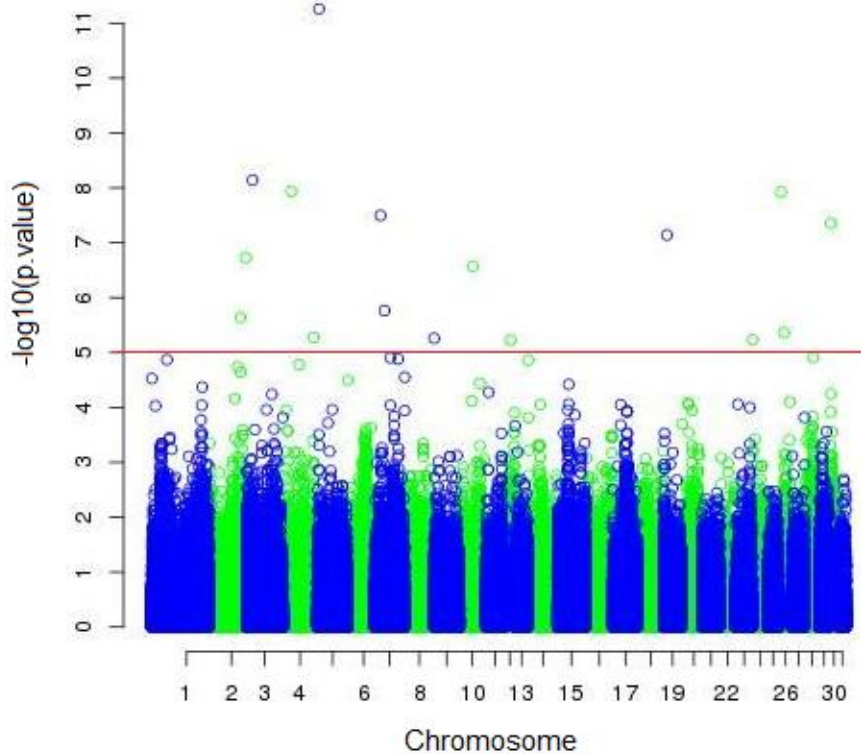
Results: Skin thickness



21 SNPs distributed on 13
chromosomes
 $10^{-5} < p.\text{value} < 10^{-24}$

Results: Cardiac dimensions

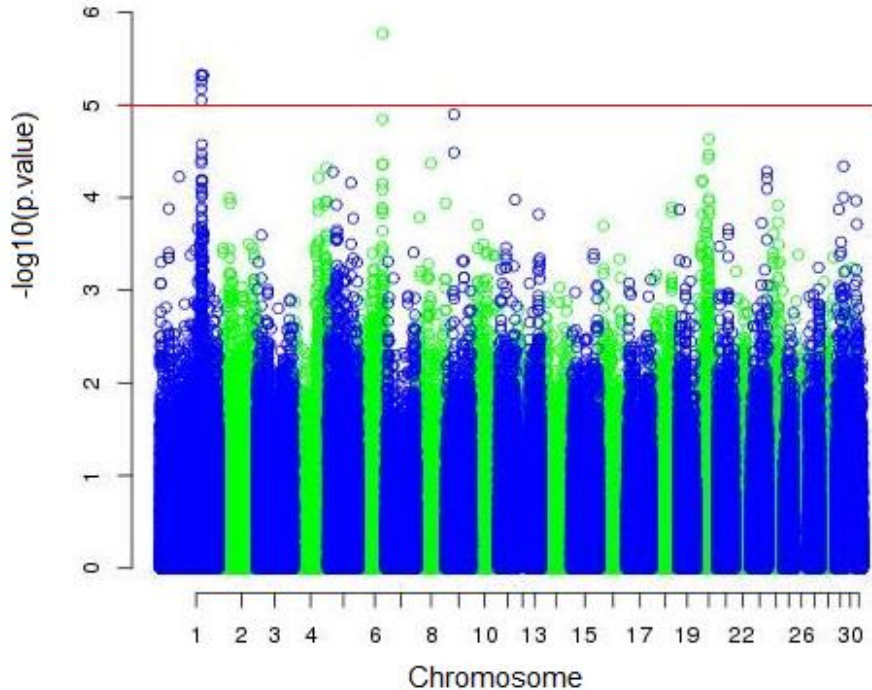
Pulmonary artery diameter (PA)



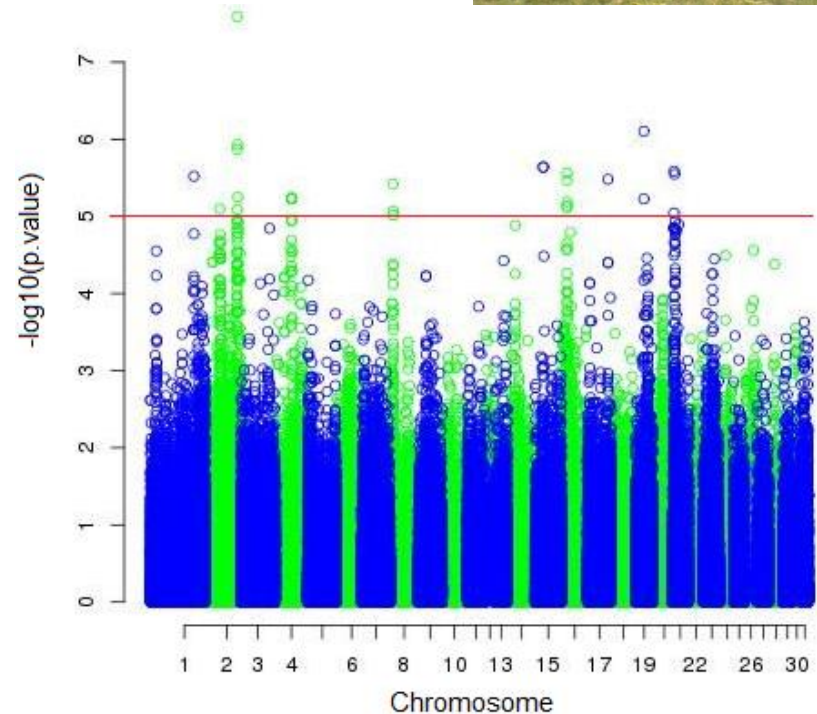
31 SNPs distributed on 18 chromosomes
 $10^{-5} < \text{p-value} < 10^{-11}$

Results: Gaits and behavioral traits

Propulsion power
(Trot)



Number of trials to
step on the weighting
platform



SNPs $10^{-5} < p.value < 10^{-8}$

Results: Endurance racing performance

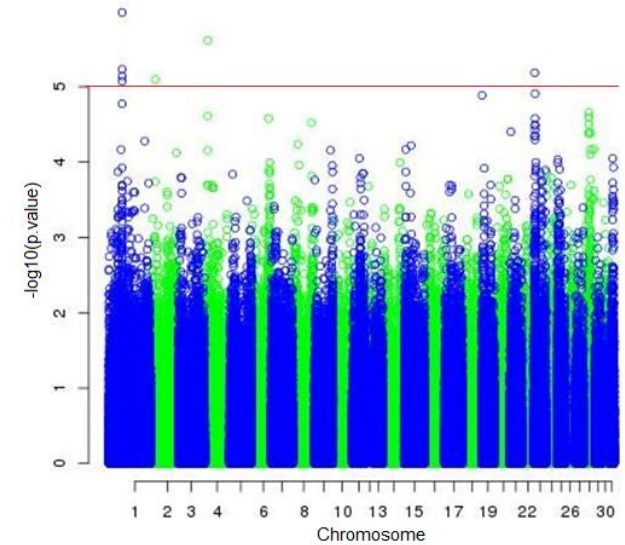
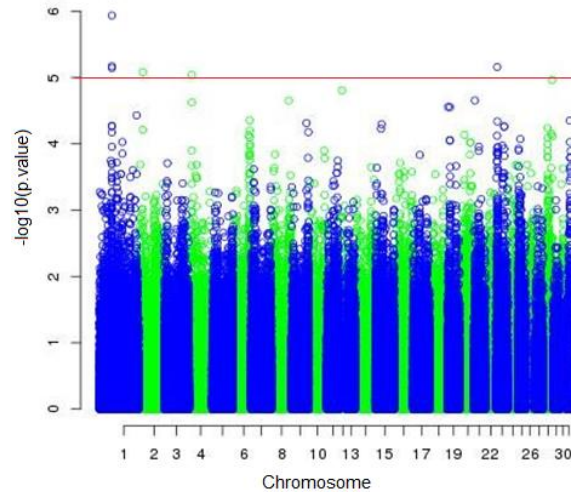
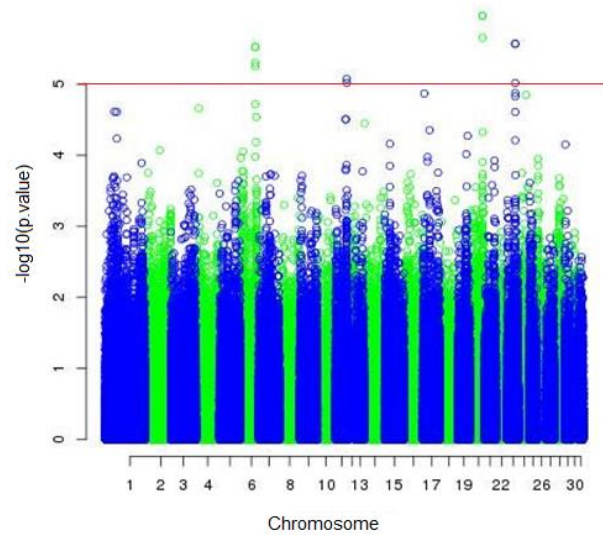


Assessed with 3 performance traits:

speed

total distance covered

finishing status



SNPs $10^{-5} < p.value < 10^{-6}$

Conclusion:

GWAS:



- **Skin thickness**
Pulmonary artery diameter } High/Medium SNP significance: $10^{-5} < p.value < 10^{-24}$
- **Gaits & Behavioral traits** → Low SNP significance: $10^{-5} < p.value < 10^{-8}$
- **Endurance racing performance** → Low SNP significance: $10^{-5} < p.value < 10^{-6}$



Polygenic determinism of the endurance ability

Candidate genes will be investigated in the main QTL regions



Thank you for your attention



CHASSIER Marjorie

EAAP Dubrovnik – 30th of August 2018