

Approach to the social sustainability of livestock farms



*Sylvie Cournut, Claire Balay (VetAgro Sup)
G rard Servi re (Institut de l' levage)*



Social dimension of sustainability

- The least documented
- Essential to understand:
 - how livestock farms operate and evolve
 - their territorial and societal roles

Objective

Design a framework to analyze the social sustainability of livestock farms

Methodological choices

- Two points of view on social sustainability: at farm and territory level
 - A descriptive and comprehensive approach
 - Non normative and situated approach
- ⇒ Social sustainability was defined with livestock farmers and territorial actors

Interviews in 4 contrasted breeding territories

Mountainous

Puy-de-Dôme (63)

Dairy cattle and meat sheep

Crop-livestock

Ardennes (08)

Large structures : dairy and
beef cattle with crops

Peri-urban

Sarthe (72)

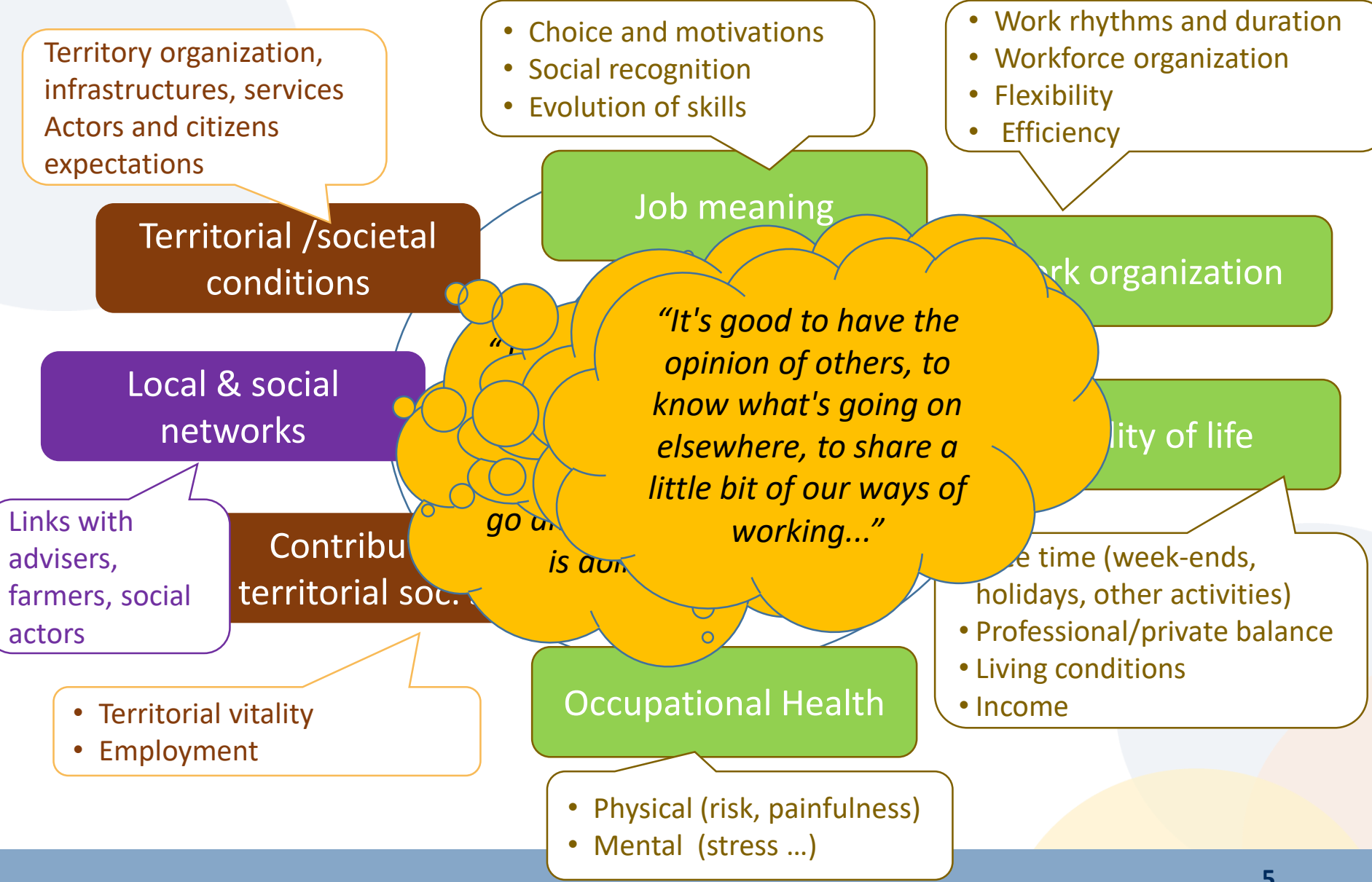
Monogastric livestock (pork
or poultry)

Pastoral

Cévennes (30)

Meat sheep only or with sweet
onions

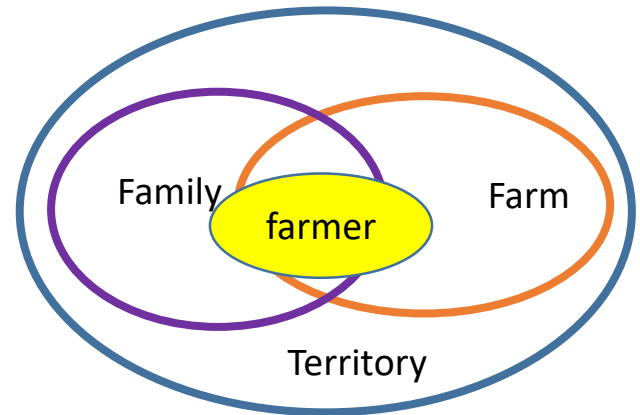
The different facets of social sustainability



Approach social sustainability in its complexity

- Facets of social sustainability that overlap and interact

- Importance of the subjectivity



Vacations

- The situated nature of social sustainability

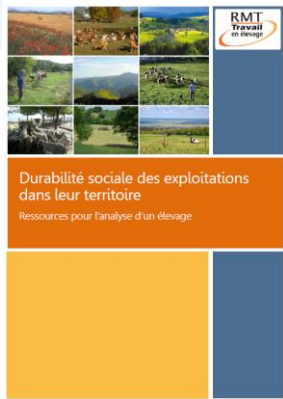
« My wife should be very insist

“having free time it’s not that bad; before we would have been treated of lazy guys”

“a week in summer a week in winter, it’s a priority »

Valorization

- Feedback and discussion meetings



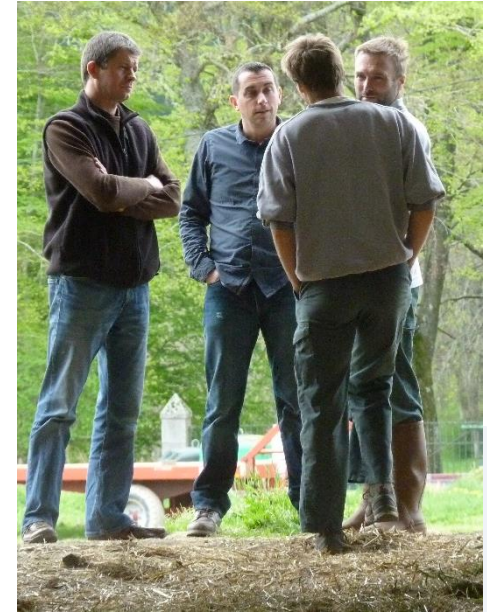
- Development of guide for the social sustainability approach

- Interventions in higher agricultural education and in public events



Conclusion

- A broad and values-laden concept, touching the intimate
- Crucial to consider when it comes to supporting farmers' strategic thinking and training future farmers and advisors
- A framework that helps addressing its complexity and makes it tangible and concrete





Thank you for your attention

