

The role of the voice in the first education of the young horse

Jocelyne Porcher research manager INRA

Sophie Barreau special assistant

Blondeau's school

Normandie area

HUMANS AND ANIMALS: A LINK IN DANGER

Banning work for animals A will of antispecific movements



Yet it is work that builds the link between humans and horses



CHEVALEDUC IN THE CONTINUATION OF ANR COW

ANR COW (2012 – 2016)
Does the animal work?



- Demonstrate the existence of an animal “working”
- Propose an animal work concept



Animal work is the physical and mental effort that an animal must make beyond the procedures, to achieve the objectives set

First education is a professional training of the young horse?



CHEVALEDUC ADEQUAT GROUND OBSRVATION : BLONDEAU'S SCHOOL (SAUMUR)

A subsidized program
by the Normandy AREA



The Normandy area = land of the horse in
France with 115,000 equidae in its territory



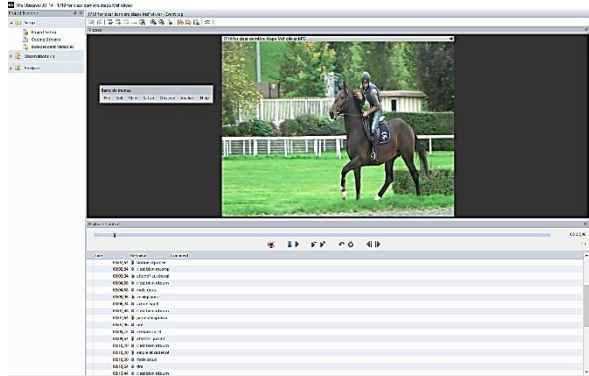
Nicolas Blondeau has devised an original
method of breaking in 20 steps



Blondeau's school receives 200 horses year
for the breaking or rehabilitation



A protocol to take into account all the richness of the real work situation



One software: observer XT



A behavior microscope: the camera
Chevaléduc: 4000 videos of 100
male and female horses filmed on
all the stages of the breaking at the
Blondeau's school

A theoretical framework in
labour sciences: the
psychodynamics of work



Interviews with School riders
"we want the horses to succeed...."



Habituation with the leash



Accept the saddle



Go to any terrain with your rider

METHOD BLONDEAU

Part 1: Learning a communication mode

Pull the loin on the walrus, stick on the shoulder and voice = move on the human placed in front of the horse.

Part 2: Get in and out of the van

Part 3: Accept the saddle

Part 4: accept the rider by walking at the step

Part 5: Carry the rider at trot and gallop and accept driving through the action of the rider's hand on the horse's mouth.

Part 6: Agree to go to any outdoor environment



Accept the rider



Leash voice traction: move on the human in front of the horse



Nicolas Blondeau

IN THE CONTEXT OF CHEVALEDUC: A FOCUS ON THE ROLE OF VOICE IN SITUATION IN TRAINING

During a break with the Blondeau method, Facing the effort that the horse has to provide to overcome his emotions: the human builds a support base where the voice has a primordial role



IN THE CONTEXT OF CHEVALEDUC: A FOCUS ON THE ROLE OF THE VOICE IN DEBARRING SITUATIONS description of the van step



Face to face with the horse, the human asks him to get in the van.



Engages in a game of persuasion to get the foal to overcome his fears.

Once in the van the horse will caress all over the body.



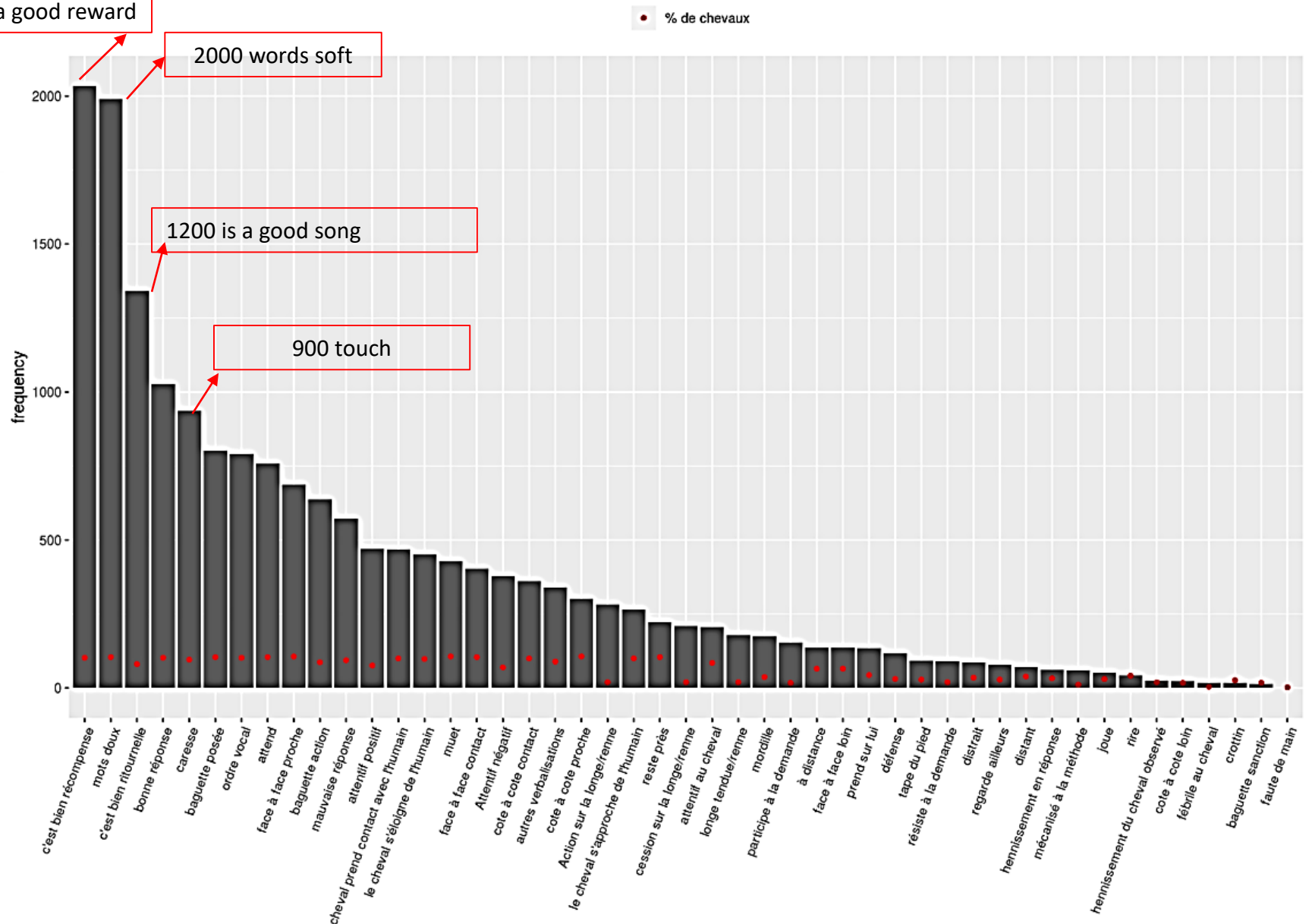
The primary role of the voice

more than 2000 that's a good reward

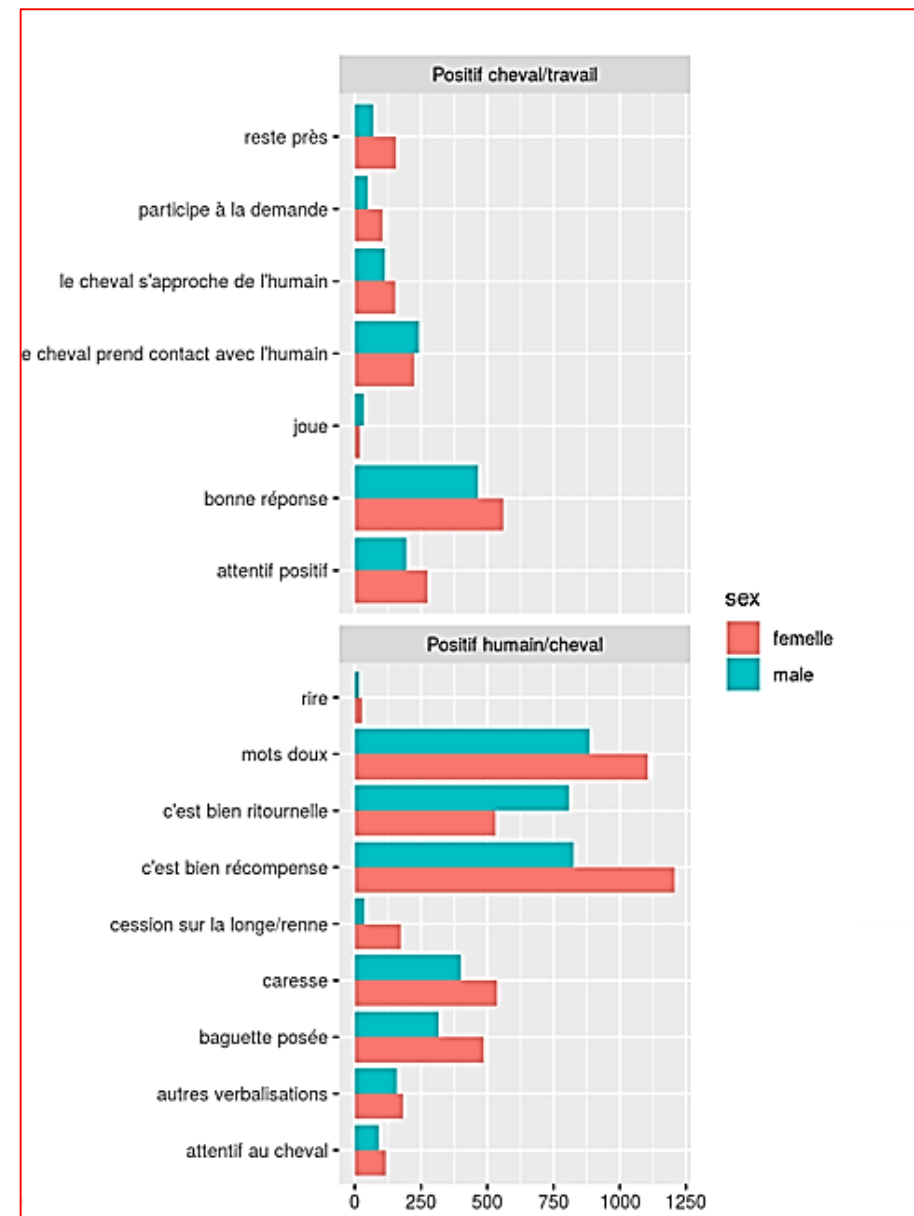
2000 words soft

1200 is a good song

900 touch

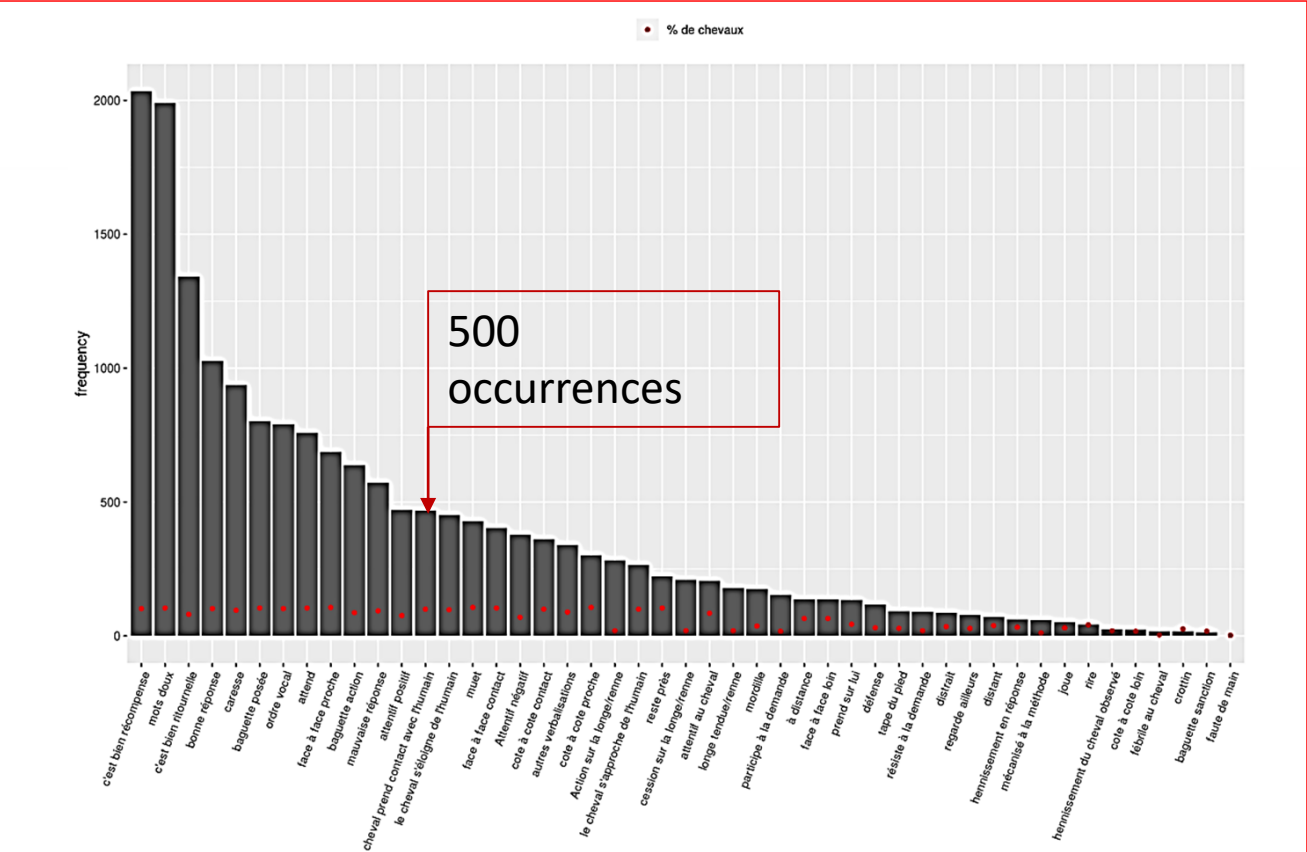


The primary role of the voice: sex differences



But is the horse sensitive to human support marks?

A gesture of contact initiated by the horse towards the human who must intrigue us.



How to interpret what is happening at the level of co-construction of the link in the van?



On the human side the results of the van stage demonstrate a willingness to surround the horse with a presence engaged in emotional support.

On the horse's side contact with the nose and mouth with an Other is always a social gesture.



“It’s because we have something to do together that creates the link!”





Thank you for your attention