

# Developing the wool sector as a tool for local/regional development

Y. Dupriez and K. Thollier

*Filière laines*

*21 rue de Transinne – 6890 Redu (B)*

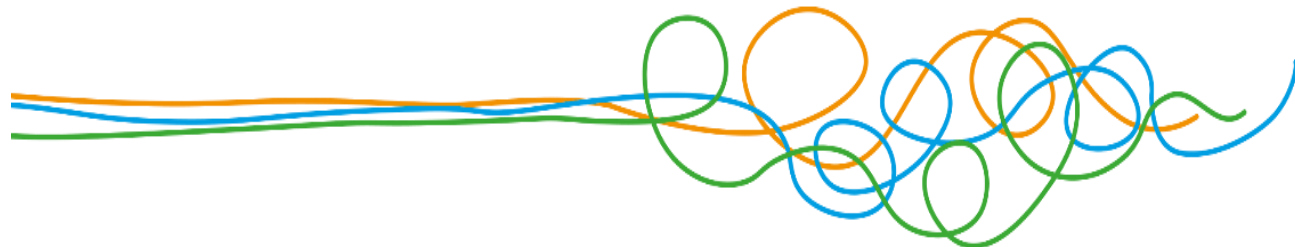
[ygaelle@laines.be](mailto:ygaelle@laines.be)



# Filière laines & DEFI-Laine

## An EU Interreg project

Partnerships to promote locally local wool from  
Wallonia - Lorraine – Luxemburg



# Filière Laines

- Since 2010, “Filière Laines” is working to rebuild a local wool value chain, first in Wallonia and then in surrounding areas.
- It has created a network of breeders, shearers, craftsmen and women, designers, companies, schools, museums, associations, and consumers who have worked together on three main types of actions :



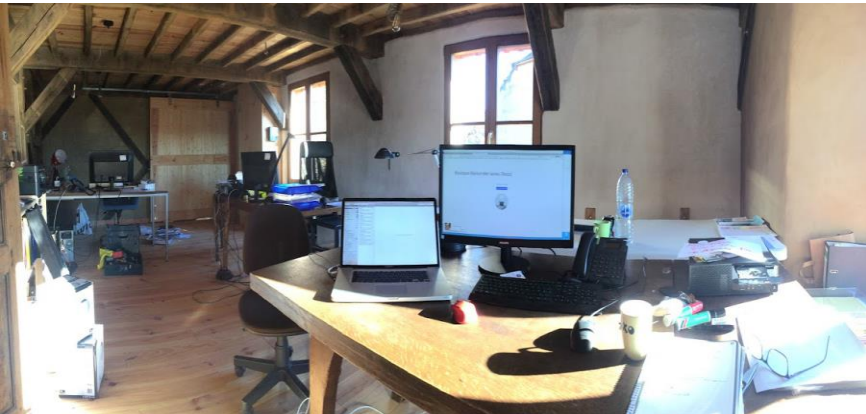
## Three actions:

1. support for projects of local wool products, whether at the artisanal, serial or industrial level;
2. public awareness and training of the stakeholders;
3. specific actions: new ways of collecting wool, exhibitions of creators, label of traceability, events, etc



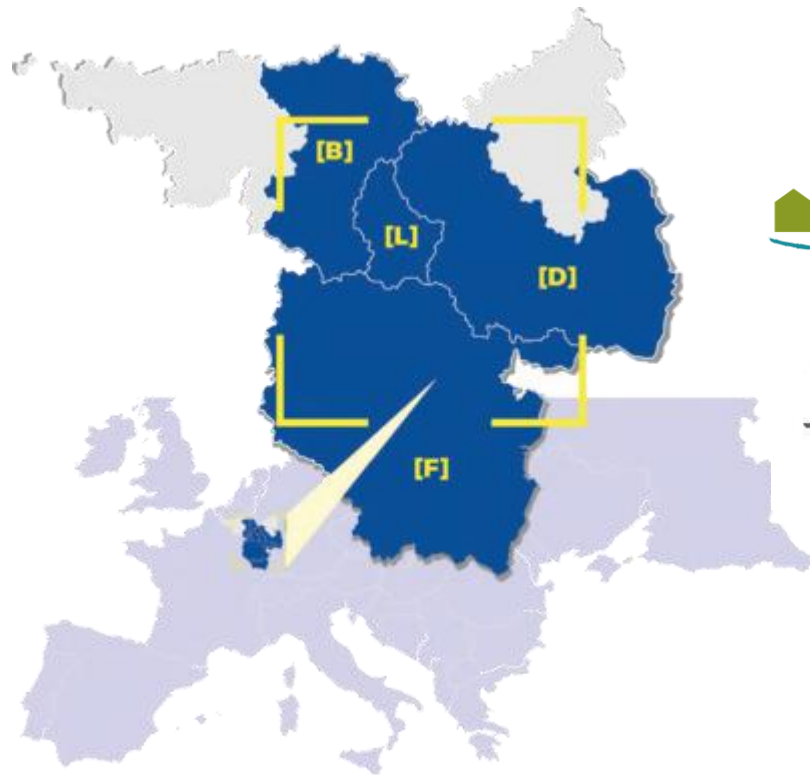


- The recent creation of the House of Wool allows to develop, little by little, a real center of services, creation and collaboration.
- The House of Wool includes and host a local wool products store, an exhibition / training space, a material library, the "FabLaines" (shared workshop), the office of the association, etc.



# DEFI-Laine EU Interreg project

Since 2017, “Filière Laines” is coordinating **DEFI-Laine**, a large EU Interreg project gathering 12 partners from French Lorraine region, Grand Duchy of Luxembourg and Belgian Wallonia.

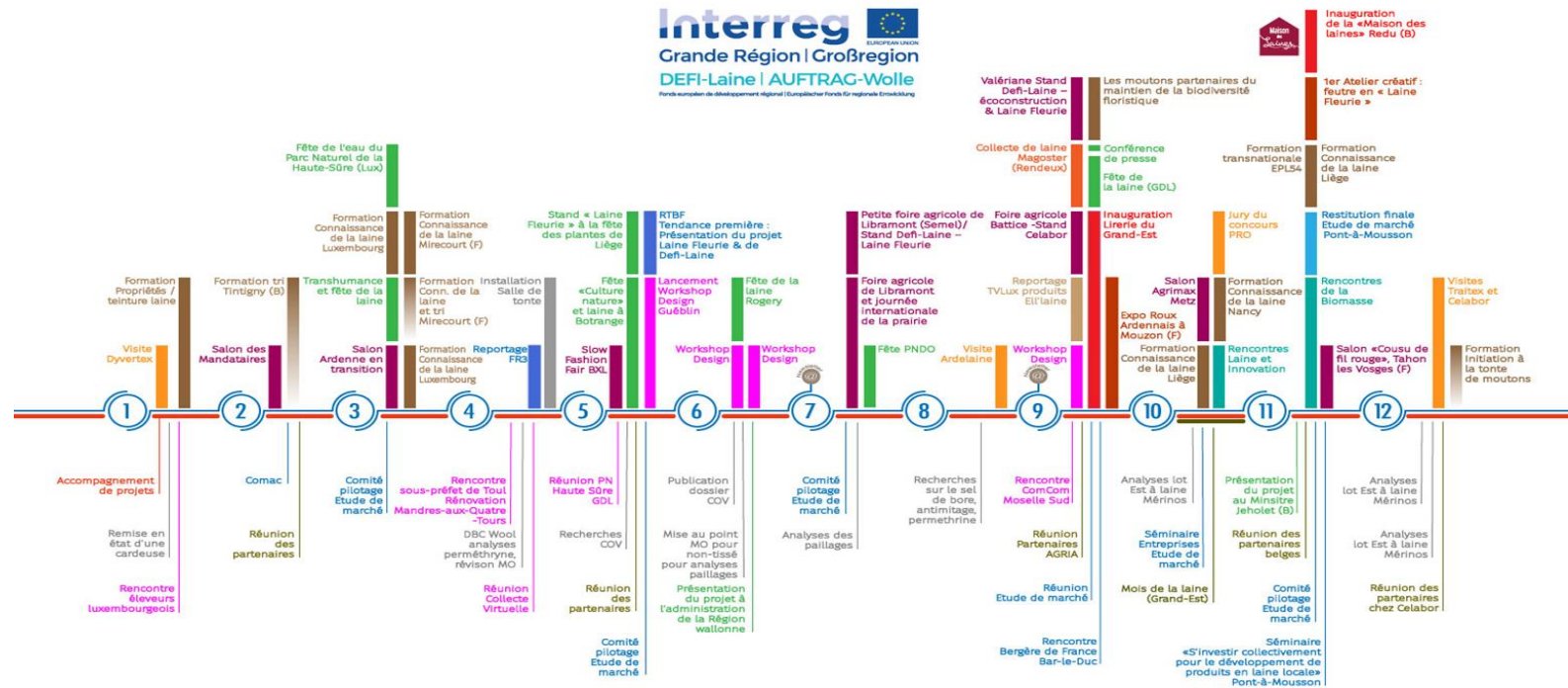




# DEFI-Laine EU Interreg project

Since 2017, “Filière Laines” is coordinating DEFI-Laine, a large EU Interreg project bringing together partners from French Lorraine region, Grand Duchy of Luxembourg and Belgian Wallonia.

They work together to valorize local wool in this wider area, which includes several significant textile companies.



- Their very active partnership has resulted in more than 50 new products in 2 years.





It includes, among others:

1. a large market study which has been able to determine products that interest consumers and are doable with locally available wools
2. laboratory tests (fineness, length, felting ability, VOC absorption, etc.)



### LA METHODOLOGIE



3. the promotion of wool in “eco-construction”, including the implementation in public and private sites, at the thermic and acoustic levels,

Etudes Thématique – Filices – Ecoconstruction  
1 rue du Kemberg  
55650 SAULCY SUR MEURTHE

Tel : 03 29 57 98 34  
Mail : tera@terageoalcoisad.fr  
SIRET 501 361 240 0010  
SARL 75004 - RCS EPINAL



M. Le Maire  
12 Rue Saint-Martin,  
54470 Mandres-aux-Quatre-Tours

Projet : Etude de rénovation énergétique en laine de mouton de la salle des fêtes de Mandres aux Quatre Tours



Avec le soutien de :



- 4. Technical and economic support for many projects, including projects for transformation tools
- 5. A tour to discover know-how and wool products
- 6. The creation of a cross-border association
- 7. Many training courses in shearing, sorting, wool knowledge, transformation know-how, sheep grazing for biodiversity, etc.





8. A design workshop and a design competition, for professionals and higher education students
9. Structuring the wool supply in the Grand Est region (F)
10. A reference website [www.laines.eu](http://www.laines.eu) and many communication tools



Agria Grand Est et tous les partenaires du projet DEFI-Laine vous convient à une journée événement autour de:

**La Laine et l'Innovation en Grande Région**

Judi 4 octobre 2018 à 14h - METZ

Au programme:

- Conférence « Quels marchés pour les produits en laine? »
- Remise des prix du concours Laine et Innovation en Grande Région
- Exposition des finalistes



Plus d'information:  
[marie.barthelemy@vanapa-lorraine.fr](mailto:marie.barthelemy@vanapa-lorraine.fr)  
 +33(0)3 83 44 08 79





# Thank you for your attention



## Aknowledgments to funding supports and partnerships



LE GOUVERNEMENT  
DU GRAND-DUCHÉ DE LUXEMBOURG  
Ministère de l'Économie



LE GOUVERNEMENT  
DU GRAND-DUCHÉ DE LUXEMBOURG  
Ministère de l'Environnement



LE GOUVERNEMENT  
DU GRAND-DUCHÉ DE LUXEMBOURG  
Ministère de l'Agriculture,  
de la Viticulture et de la  
Protection des consommateurs



Direction générale du tourisme:



Avec le soutien de la



Wallonie



*For more informations :*

*Ygaëlle Dupriez – Filière laines*

*21 rue de Transinne – 6890 Redu (B)*

[ygaelle@laines.be](mailto:ygaelle@laines.be)

[www.laines.eu](http://www.laines.eu)



Welcome to wool festival  
in Rossignol (Belgium)  
on 29 September 2019

<https://www.facebook.com/events/857902631232728/>

